



WOMEN'S WEEKLY

contact: Brian Smith | bsmith@hockeyeastonline.com | 339.227.2988 | @BriSmiHE

Hockey East Association | 11 Chestnut Street | Amesbury, MA | 01913

FOR IMMEDIATE RELEASE: NOVEMBER 5, 2024

Women's League Play in Full Swing as Boston University Rolls

UConn Sweeps, Boston College Takes Lone Win

RECENT RESULTS

Friday 11/1

at Maine 5, UVM 1 *
at BU 5, PC 1 *
at #10 UConn 2, HC 1 *
NU 4 at UNH 1 *

Saturday 11/2

#10 UConn 2 at HC 0 *
UVM 2 at Maine 1 *
UNH 2 at NU 0 *
at #13 BC 7, MC 3 *
BU 3 at Providence 2 *

* Hockey East

HOCKEY EAST HEADLINES

New Hampshire earned its first win against Northeastern since Dec. 2, 2017 with a 2-0 road shutout on Saturday thanks in part to 30 saves from **Noemi Martinez**. **Andi Calderone** recorded an assist, five blocks and an even on-ice rating in UNH's home-and-home split with the Huskies.

Boston University extended its winning streak to seven straight with a sweep of league-foe Providence and growing its first-place lead to four points in the Hockey East Standings (6-1-0). **Callie Shanahan** made 33 saves on 34 shots at home Friday and 21 saves on 23 shots on the road Saturday in a 3-2 win. The senior has only given up two goals at home this year and carries a goals against average of 1.17 and save percentage of .957.

UConn swept Holy Cross, 2-1 and 2-0, off the back of **Megan Warrener's** first shut out of the season with 15 saves in Saturday's 2-0 victory. **Meghane Duchesne-Chalifoux** assisted on three of UConn's four goals in a two-win weekend.

Maine and Vermont split a weekend series as the Black Bears' **Kiia Lahtinen** made 17 saves in a 5-1 win on Friday, picking up her first career win in her first start at Alford Arena. **Lily Fetch** recorded three points the victory.

2024-25 HOCKEY EAST STANDINGS

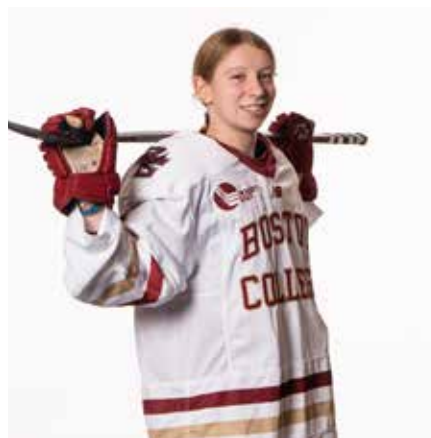
Rk	Team	Hockey East								Overall			
		GP	Pts	W	L	T	OW	OL	SW	GP	W	L	T
1.	Boston University	7	18	6	1	0	0	0	0	11	8	3	0
2.	UConn	5	14	5	0	0	0	0	0	10	6	4	0
3.	Northeastern	7	11	3	3	1	0	0	1	11	5	5	1
4.	Boston College	4	9	3	1	0	0	0	0	9	6	3	0
5.	Maine	6	7	2	4	0	0	1	0	10	2	8	0
	Vermont	6	7	2	4	0	0	1	0	10	3	7	0
7.	Merrimack	5	6	2	3	0	0	0	0	8	4	4	0
8.	New Hampshire	6	5	2	4	0	1	0	0	10	5	4	1
	Providence	6	5	2	4	0	1	0	0	10	5	5	0
	Holy Cross	6	5	1	4	1	0	1	0	10	4	5	1



HOCKEY EAST PLAYER OF THE WEEK

SAMMY TABER BOSTON COLLEGE

Sammy Taber (So., F; Tewksbury, Mass.), the reigning Pro Ambitions Rookie of the Year, exploded for four points (2g, 2a) in a 7-3 win over Merrimack on Saturday, setting up the eventual game-winning goal. Her two goals both came in the first period just seven minutes apart.



PRO AMBITIONS ROOKIE OF THE WEEK

CLAIRE MURDOCH UCONN

Claire Murdoch (Fr., F; Toronto, Ont.) netted goals in Friday and Saturday's wins over the Holy Cross, giving her a team-high five goals this season. Murdoch scored the equalizer late in the third period of Friday's 2-1 win, sending the game to overtime. Murdoch then scored UConn's second goal in Saturday's 2-0 win.



HOCKEY EAST DEFENDER OF THE WEEK

ANDI CALDERONE NEW HAMPSHIRE

Andi Calderone (Gr., D; Kirkland, Que.) recorded an assist, five blocks and an even on-ice rating in UNH's home-and-home split with Northeastern. Calderone set up the power-play goal that gave the Wildcats a 1-0 lead, eventually proving to be the game-winning tally in a 2-0 win on Nov. 2 at Matthews Arena. Her three blocks led all skaters.



STOP IT GOALTENDER OF THE WEEK

NOEMI MARTINEZ NEW HAMPSHIRE

Noemi Martinez (So., G; Glen Ridge, N.J.) made a career-high 30 saves to record her first career win and shutout by backstopping UNH to a 2-0 win at Northeastern on Nov. 2. Martinez made 11 saves in the second period and 14 more in the third period, including one in the final 2:56 when NU pulled its goalie in favor of an extra skater. She backstopped a perfect UNH penalty kill with three saves on four Northeastern power plays. The win was UNH's first victory against Northeastern since Dec. 2, 2017 snapping a 24-game winless streak against the Huskies (0-23-1). In three games this season, Martinez is 1-0-1 with a 0.79 GAA and .972 save percentage.



HOCKEY EAST WEEKLY TOP PERFORMERS

Lauren Glaser, BC (Fr., F; Marlborough, Mass.) Dished out a career-high three assists in a 7-3 win over Merrimack on Saturday. Glaser now has handed out four assists on the year.

Molly Jordan, BC (So., D; Berlin, Conn.) In Saturday's 7-3 win over Merrimack, Jordan notched found the back of the net for the second consecutive game and extended her point-streak to three.

Grace Campbell, BC (Jr., G; Kensington, Md.) Earned her fourth win in a 7-3 victory on Saturday against Merrimack. She saved nine of the 12 shots she faced.

Clara Yuhn, BU (Jr., F; Bloomfield Hills, Mich.) Scored two goals in a weekend sweep over Providence, netting BU's third goal in a 5-1 win on Friday to help keep the Terriers undefeated at home this season. She then opening the scoring in the second game on the power play. She now has five goals on the season, the second most on the BU squad, and won 13 of 17 faceoffs in the series.

Lola Reid, BU (Fr., F; Lincoln, Neb.) Assisted on BU's game-winning goal on Friday against Providence and added BU's fifth goal on an empty net in a 5-1 win. She leads all Terriers with 13 points and has logged at least one point in every home game.

Julia Shaunessy, BU (Gr., D; Duxbury, Mass.) Handed out two assists and added four blocks in weekend sweep of Providence. She assisted on BU's third and fifth goals of Friday's 5-1 win and then blocked three shots on the road at Providence to help BU to its seventh win in a row.

Callie Shanahan, BU (Sr., G; Commerce, Mich.) Added two wins in weekend sweep of Providence, making 33 saves on 34 shots at home Friday and 21 saves on 23 shots on the road Saturday in a 3-2 win. The senior has only given up two goals at home this year and carries a goals against average of 1.17 and save percentage of .957.

Meghane Duchesne-Chalifoux, UConn (Jr., D; Montreal, Que.) Assisted on three of UConn's four goals in a two-win weekend over Holy Cross. Duchesne-Chalifoux set up UConn's late-game equalizer on Friday. The Montreal, Quebec native then recorded her first career multi-assist game on Saturday, boosting the Huskies to 5-0-0 start in Hockey East.

Megan Warrenner, UConn (Sr., G; Stoney Creek, Ont.) Made 15 saves in Saturday's 2-0 win over Holy Cross to earn her first shutout of the season.

Lily Fetch, Maine (So., F; Woodbury, Minn.) Recorded three points in a 5-1 win over Vermont in a split week-end against the Catamounts. She scored one goal and added two primary assists to go along with two shots on goal.

Kiia Lahtinen, Maine (Fr., G; Porvoo, Finland) Made 17 saves in a 5-1 win over Vermont to picked up her first career win in her first start at Alford Arena. She currently sits among the top five league goaltenders for conference save percentage (.935). She made 41 total saves in weekend split.



HOCKEY EAST SCORING LEADERS

Rk.	Player	School	Yr.	Pos.	GP	Pt./G	G-A-P
1.	Lola Reid	BU	Fr	F	7	1.29	4-5-9
2.	Claire Murdoch	CT	Fr	F	5	1.40	4-3-7
	Sammy Taber	BC	So	F	4	1.75	2-5-7
4.	Eloise Caron	NE	Fr	F	7	0.86	2-4-6
	Skylar Irving	NE	Sr	F	7	0.86	2-4-6
	Taze Thompson	NE	Sr	F	7	0.86	1-5-6
5.	Several Tied with 5						



STOP IT GOALTENDING LEADERS

Conference Goals Against Average

Rk.	Name	School	MIN	GA	GAA
1.	Megan Warrener	CT	119:57	1	0.50
2.	Tia Chan	CT	181:34	3	0.99
3.	Callie Shanahan	BU	339:54	7	1.24
4.	Kiia Lahtinen	ME	235:17	7	1.79
5.	Paige Taborski	NE	298:20	9	1.81

Conference Save Percentage

Rk.	Name	School	SVS	GA	SV%
1.	Megan Warrener	CT	35	1	0.972
2.	Tia Chan	CT	69	3	0.958
3.	Callie Shanahan	BU	131	7	0.949
4.	Abby Hornung	HC	68	4	0.944
5.	Kiia Lahtinen	ME	101	7	0.935



HOCKEY EAST THREE STARS AWARD

At the conclusion of every Hockey East game, the "Three Stars of The Game" are selected by the members of the media. Season leaders in 2024-25, listed in alphabetical order, include:

Player	School	Cl.	Pos.
Eloise Caron	BU	Fr.	F
Sarah Davies	PC	Jr.	F
Lola Reid	BU	Fr.	F
Callie Shanahan	BU	Sr.	G
Sammy Taber	BC	So.	F



HOCKEY EAST WEEKLY AWARDS

HOCKEY EAST

PLAYER OF THE WEEK

Week	Player
Oct. 7	Skylar Irving, NU
Oct. 14	Claire Murdoch, UConn
Oct. 21	Taze Thompson, NU
Oct. 28	Maria Lindberg, MC
Nov. 4	Sammy Taber, BC

PRO AMBITIONS

ROOKIE OF THE WEEK

Week	Player
Oct. 7	Lola Reid, BU
Oct. 14	Éloïse Caron, NU
Oct. 21	Lola Reid, BU
Oct. 28	Lola Reid, BU
Nov. 4	Claire Murdoch, UConn

HOCKEY EAST

DEFENDER OF THE WEEK

Week	Player
Oct. 7	Ava Rinker, UConn
Oct. 14	Hannah Deck, HC
Oct. 21	Maddie Crowley-Cahill, UNH
Oct. 28	Molly Jordan, BC
Nov. 4	Andi Calderone, UNH

STOP IT GOALTENDING

GOALTENDER OF THE WEEK

Week	Player
Oct. 7	Sedona Blair, UNH
Oct. 14	Callie Shanahan, BU
Oct. 21	Sedona Blair, UNH
Oct. 28	Grace Campbell, BC
Nov. 4	Noemi Martinez, UNH

HOCKEY EAST MONTHLY AWARDS

HOCKEY EAST

PLAYER OF THE MONTH

Month Player, School

Sep./Oct.	
Nov.	
Dec.	
Jan.	
Feb.	
March	

PRO AMBITIONS

ROOKIE OF THE MONTH

Month Player, School

Sep./Oct.	
Nov.	
Dec.	
Jan.	
Feb.	
March	

HOCKEY EAST

DEFENDER OF THE MONTH

Month Player, School

Sep./Oct.	
Nov.	
Dec.	
Jan.	
Feb.	
March	

STOP IT GOALTENDING

GOALTENDER OF THE MONTH

Month Player, School

Sep./Oct.	
Nov.	
Dec.	
Jan.	
Feb.	
March	



UPCOMING SCHEDULE

Thursday 11/7

Boston University at Merrimack- 6pm*

Friday 11/8

Merrimack at Boston University- 3pm*
 Northeastern at UConn- 6pm*
 Boston College at Maine- 6pm*
 Providence at New Hampshire- 6pm*

Saturday 11/9

Holy Cross at Vermont- 1pm*
 UConn at Northeastern- 2pm*
 New Hampshire at Providence- 3pm*
 Boston College at Maine- 6pm*

* Hockey East
 ! NESN

USA Hockey/The Rink Live Women's College Hockey Poll

Rk.	School, Pts. (FPV)	Record	LW
1.	Wisconsin,	10-0-0	
2.	Ohio State,	11-2-2	
3.	Minnesota,	8-3-1	
4.	Minnesota Duluth,	6-3-1	
5.	Colgate,	9-3-0	
6.	Clarkson,	7-3-0	
7.	Quinnipiac,	8-3-1	
8.	St. Lawrence,	7-4-1	
9.	St. Cloud State,	7-3-2	
10.	UConn,	6-4-0	
11.	Cornell,	2-3-1	
12.	Penn State,	9-3-0	
13.	Boston College,	6-3-0	
14.	Brown,	6-0-0	
15.	Boston University,	8-3-0	

Other Receiving Votes:

USCHO.com Women's College Hockey Poll

Rk.	School, Pts. (FPV)	Record	LW
1.	Wisconsin, 300 (20)	10-0-0	1
2.	Ohio State, 276	11-2-2	2
3.	Minnesota, 259	8-3-1	3
4.	Minnesota Duluth, 243	6-3-1	4
5.	Colgate, 207	9-3-0	6
6.	Clarkson, 164	7-3-0	5
7.	Quinnipiac, 158	8-3-1	11
8.	St. Lawrence, 156	7-4-1	7
9.	St. Cloud State, 141	7-3-2	8
10.	UConn, 110	6-4-0	10
11.	Cornell, 95	2-3-1	9
12.	Penn State, 84	9-3-0	12
13.	Boston College, 72	6-3-0	13
14.	Brown, 68	6-0-0	15
15.	Boston University, 31	8-3-0	NR

Other Receiving Votes: Yale 20, Mercyhurst 6, **Providence 5**, **Northeastern 4**, Princeton 1





Boston College
6-3-0
(3-1-0 HE)

SEPTEMBER	W, 5-1
28 at Stonehill	
OCTOBER	L, 1-7
4 WISCONSIN	L, 0-7
5 WISCONSIN	L, 1-4
10 at Holy Cross*	W, 5-1
12 HOLY CROSS*	W, 2-1
19 at Merrimack*	W, 3-1
26 CLARKSON	W, 4-3
27 CLARKSON	
NOVEMBER	W, 7-3
2 MERRIMACK*	6:00pm
8 at Maine*	4:00pm
9 at Maine*	6:00pm
15 at Boston University*	2:00pm
16 BOSTON UNIVERSITY*	2:00pm
22 CONNECTICUT*	6:00pm
23 at Connecticut*	
DECEMBER	11:00am
4 PROVIDENCE*	6:00pm
6 at Holy Cross*	
JANUARY	6:00pm
3 CONNECTICUT*	2:00pm
5 MAINE*	6:00pm
7 NEW HAMPSHIRE*	4:00pm
14 vs Northeastern #	6:00pm
17 VERMONT*	2:00pm
18 VERMONT*	TBA
21 TBA #	6:00pm
24 at Providence*	2:00pm
25 PROVIDENCE*	6:00pm
31 at Boston University	
FEBRUARY	4:00pm
1 at Merrimack*	2:00pm
14 NORTHEASTERN*	7:00pm
15 at Northeastern*	6:00pm
21 NEW HAMPSHIRE*	3:00pm
22 at New Hampshire*	

* Hockey East
Beanpot



Boston University
8-3-0
(6-1-0 HE)

SEPTEMBER	W, 4-1
30 CONCORDIA (exh.)	
OCTOBER	W, 7-1
1 MERRIMACK*	L, 0-1
4 at Minnesota	L, 2-5
11 at Northeastern*	L, 0-4
12 NORTHEASTERN*	W, 4-0
18 MAINE*	W, 2-1
19 MAINE*	W, 2-0
25 at Syracuse	W, 4-1
26 at Syracuse	W, 3-2
NOVEMBER	W, 5-1
1 PROVIDENCE*	W, 3-2
2 at Providence*	6:00pm
7 at Merrimack*	3:00pm
8 MERRIMACK*	6:00pm
15 BOSTON COLLEGE*	2:00pm
16 at Boston College*	2:00pm
27 PRINCETON	
DECEMBER	6:00pm
6 at Maine*	
JANUARY	6:00pm
3 at Holy Cross*	3:00pm
10 at Vermont*	TBA
11 at Vermont*	1:00pm
14 vs Harvard #	TBA
18 at UNH*	6:00pm
21 TBA #	4:00pm
24 at Holy Cross*	4:00pm
25 HOLY CROSS*	6:00pm
31 BOSTON COLLEGE*	
FEBRUARY	4:00pm
1 VERMONT*	7:00pm
4 at Northeastern*	6:00pm
7 CONNECTICUT*	4:00pm
8 PROVIDENCE*	6:00pm
14 at New Hampshire*	4:00pm
15 NEW HAMPSHIRE*	3:00pm
21 at Connecticut*	4:00pm
22 CONNECTICUT*	4:00pm

* Hockey East
Beanpot



Holy Cross
4-5-1
(1-4-1 HE)

SEPTEMBER	W, 3-2
27 at RPI	L, 0-2
28 at RPI	
OCTOBER	W, 5-1
4 ST. ANSELM	W, 3-2
5 at St. Anselm	W, 4-1
10 BOSTON COLLEGE*	L, 1-5
12 at Boston College*	T, 4-4 (SOL)
18 NORTHEASTERN*	L, 2-4
19 at Northeastern*	
NOVEMBER	L, 1-2 (OT)
1 at Connecticut*	L, 0-2
2 CONNECTICUT*	1:00pm
9 at Vermont*	6:00pm
15 NEW HAMPSHIRE*	6:00pm
16 at New Hampshire*	2:00pm
30 ASSUMPTION	
DECEMBER	3:00pm
1 at Brown	6:00pm
6 BOSTON COLLEGE*	2:00pm
7 at Merrimack*	
JANUARY	6:00pm
3 BOSTON UNIVERSITY*	7:00pm
4 at Northeastern*	6:00pm
10 at Providence*	3:00pm
11 at Providence*	6:00pm
17 MERRIMACK*	3:00pm
18 at Merrimack*	6:00pm
24 BOSTON UNIVERSITY*	4:00pm
25 at Boston University*	5:00pm
31 NEW HAMPSHIRE*	
FEBRUARY	1:00pm
1 MAINE*	6:00pm
7 PROVIDENCE*	7:30pm
8 at Connecticut*	7:00pm
15 VERMONT*	3:00pm
16 VERMONT*	6:00pm
21 at Maine*	4:00pm
22 at Maine*	

* Hockey East



Maine
2-8-0
(2-4-0 HE)

SEPTEMBER	T, 2-2
22 at New Hampshire (exh.)	L, 0-7
27 QUINNIPIAC	L, 0-4
28 QUINNIPIAC	
OCTOBER	L, 2-3
11 PROVIDENCE*	W, 3-2
12 PROVIDENCE*	L, 1-2
18 at Boston University*	L, 0-2
19 at Boston University*	L, 3-8
25 at Colgate	L, 1-4
26 at Colgate	
NOVEMBER	W, 5-1
1 VERMONT*	L, 1-2
2 VERMONT*	6:00pm
8 BOSTON COLLEGE*	4:00pm
9 BOSTON COLLEGE*	6:00pm
15 at Northeastern*	1:30pm
16 at Northeastern*	2:00pm
24 at Vermont*	6:00pm
29 WISCONSIN	6:00pm
30 WISCONSIN	4:00pm
DECEMBER	6:00pm
6 BOSTON UNIVERSITY*	7:00pm
7 CONNECTICUT*	6:00pm
14 MERRIMACK*	
JANUARY	6:00pm
3 at New Hampshire*	2:00pm
5 at Boston College*	6:00pm
10 HARVARD	6:00pm
11 HARVARD	4:00pm
17 at Connecticut*	3:00pm
18 at Connecticut*	6:00pm
24 NEW HAMPSHIRE*	4:00pm
25 NEW HAMPSHIRE*	2:00pm
31 at Providence*	
FEBRUARY	1:00pm
1 at Holy Cross*	6:00pm
7 NORTHEASTERN*	2:00pm
14 at Merrimack*	2:00pm
15 at Merrimack*	6:00pm
21 HOLY CROSS*	4:00pm
22 HOLY CROSS*	

* Hockey East



Merrimack
4-4-0
(2-3-0 HE)

SEPTEMBER
21 CONCORDIA (exb.)
27 ST. LAWRENCE

OCTOBER
1 at Boston University *
11 at Vermont *
12 at Vermont *
19 BOSTON COLLEGE *
25 LINDENWOOD
26 LINDENWOOD
NOVEMBER
2 at Boston College *
7 BOSTON UNIVERSITY *
8 at Boston University *
15 CONNECTICUT *
16 at Connecticut *
22 at RPI
23 at RPI
29 PENN STATE !
30 TBA !

DECEMBER
6 VERMONT *
7 HOLY CROSS *
14 at Maine *
JANUARY
3 at Northeastern *
4 PROVIDENCE *
10 NEW HAMPSHIRE *
17 at Holy Cross *
18 HOLY CROSS *
24 at Northeastern *
25 NORTHEASTERN *
31 at Connecticut *

FEBRUARY
1 BOSTON COLLEGE *
6 at New Hampshire *
8 NEW HAMPSHIRE *
14 MAINE *
15 MAINE *
21 PROVIDENCE *
22 at Providence *

L, 2-3
L, 0-3
L, 1-7
W, 3-2
W, 3-2
L, 1-2
W, 5-1
W, 4-1
L, 3-7
6:00pm
3:00pm
6:00pm
3:00pm
6:00pm
3:00pm
TBA
TBA
2:00pm
2:00pm
6:00pm
6:00pm
6:00pm
6:00pm
6:00pm
6:00pm
3:00pm
7:00pm
6:00pm
4:00pm
6:00pm
6:00pm
6:00pm
2:00pm
2:00pm
6:00pm
6:00pm
6:00pm
6:00pm
2:00pm
2:00pm
6:00pm
6:00pm
6:00pm
2:00pm
2:00pm

* Hockey East
! Smashville Showcase



New Hampshire
5-4-1
(2-4-0 HE)

SEPTEMBER
22 MAINE (exb.)

OCTOBER
4 ASSUMPTION
5 ASSUMPTION
11 CONNECTICUT *
12 at Connecticut *
18 UNION
19 UNION
25 VERMONT *
26 VERMONT *

NOVEMBER
1 NORTHEASTERN *
2 at Northeastern *
8 PROVIDENCE *
9 at Providence *
15 at Holy Cross *
16 HOLY CROSS *
22 at Vermont *
26 at Mercyhurst
27 at Mercyhurst

DECEMBER
4 NORTHEASTERN *
6 CONNECTICUT *
30 DARTMOUTH *

JANUARY
3 MAINE *
7 at Boston College *
10 at Merrimack *
18 BOSTON UNIVERSITY *
24 at Maine *
25 at Maine *
31 at Holy Cross *

FEBRUARY
1 at Providence *
6 MERRIMACK *
8 at Merrimack *
14 BOSTON UNIVERSITY *
15 at Boston University *
21 at Boston College *
22 BOSTON COLLEGE *

* Hockey East



Northeastern
5-5-1
(3-3-1 HE)

SEPTEMBER
21 DURHAM W. (exh.)
26 at Penn State
27 at Penn State

OCTOBER
4 QUINNIPIAC
5 QUINNIPIAC
11 BOSTON UNIVERSITY *
12 at Boston University *
18 at Holy Cross *
19 HOLY CROSS *
25 at Providence *

NOVEMBER
1 at New Hampshire *
2 NEW HAMPSHIRE *
8 at Connecticut *
9 CONNECTICUT *
15 MAINE *
16 MAINE *
30 BOSTON COLLEGE *

DECEMBER
4 at New Hampshire *
JANUARY
3 MERRIMACK *
4 HOLY CROSS *
7 YALE
14 BOSTON COLLEGE #
17 PROVIDENCE *
18 at Providence *
21 TBA #
24 MERRIMACK *
25 at Merrimack *
31 VERMONT *

FEBRUARY
1 at Connecticut *
4 BOSTON UNIVERSITY *
7 at Maine *
14 at Boston College *
15 BOSTON COLLEGE *
21 at Vermont *
22 at Vermont *

* Hockey East
Bearpout



Providence
5-5-0
(2-4-0 HE)

OCTOBER
4 ST. MICHAEL'S
5 ST. MICHAEL'S
8 at Quinnipiac
11 at Maine *
12 at Maine *
15 QUINNIPIAC
18 CONNECTICUT *
25 NORTHEASTERN *

NOVEMBER
1 at Boston University *
2 BOSTON UNIVERSITY *
8 at New Hampshire *
9 NEW HAMPSHIRE *
15 VERMONT *
16 VERMONT *
22 at Harvard
23 HARVARD
30 BROWN

DECEMBER
4 at Boston College *
JANUARY
3 at Vermont *
4 at Merrimack *
10 HOLY CROSS *
11 HOLY CROSS *
17 at Northeastern *
18 NORTHEASTERN *
24 BOSTON COLLEGE *
25 at Boston College *

FEBRUARY
1 NEW HAMPSHIRE *
7 at Holy Cross *
8 at Boston University *
14 at Connecticut *
15 CONNECTICUT *
21 at Merrimack *
22 MERRIMACK *

W, 8-0
W, 6-0
L, 0-1
W, 3-2
L, 2-3
W, 3-2
L, 2-3
W, 2-1
L, 1-5
L, 2-3
6:00pm
3:00pm
12:00pm
12:00pm
6:00pm
2:00pm
3:00pm
11:00am
6:00pm
6:00pm
6:00pm
3:00pm
6:00pm
2:00pm
6:00pm
2:00pm
3:00pm
6:00pm
3:00pm
6:00pm
3:00pm
6:00pm
2:00pm
3:00pm
6:00pm
6:00pm
6:00pm
6:00pm
2:00pm
2:00pm

* Hockey East



SEPTEMBER
22 CONCORDIA (exb.)

OCTOBER
4 at Clarkson
5 at Clarkson
11 MERRIMACK *
12 MERRIMACK *
18 ST. LAWRENCE
19 ST. LAWRENCE
25 at New Hampshire *
26 at New Hampshire *

NOVEMBER
1 at Maine *
2 at Maine *
9 HOLY CROSS *
15 at Providence *
16 at Providence *
20 UNION
22 NEW HAMPSHIRE *
24 MAINE *
29 at Minnesota Duluth
30 at Minnesota Duluth

DECEMBER
6 at Merrimack *
JANUARY
3 PROVIDENCE *
5 at Connecticut *
10 BOSTON UNIVERSITY *
11 BOSTON UNIVERSITY *
17 at Boston College *
18 at Boston College *
24 CONNECTICUT *
25 CONNECTICUT *
31 at Northeastern *

FEBRUARY
1 at Boston University *
8 BOSTON COLLEGE *
15 at Holy Cross *
16 at Holy Cross *
21 NORTHEASTERN *
22 NORTHEASTERN *

* Hockey East

2023-24 SEASON SUPERLATIVES

SHUTOUTS

Date	Player	Team	Opponent	Svs	Result
9/23	Gwyneth Philips	NU	Penn State	27	W, 1-0
9/29	Tia Chan	UConn	Penn State	33	W, 2-0
9/29	Gwyneth Philips	NU	LIU	17	W, 6-0
9/30	Gwyneth Philips	NU	LIU	19	W, 2-0
10/6	Jorden Mattison	ME	Stonehill	23	W, 7-0
10/7	Calli Hogarth	MC	Syracuse	15	W, 4-0
10/7	Gwyneth Philips	NU	BU	31	W, 2-0
10/13	Calli Hogarth	MC	NU	29	W, 1-0
10/20	Sedona Blair	UNH	UConn	27	W, 2-0
10/21	Megan Warrener	UConn	UNH	26	W, 4-0
10/27	Grace Campbell	BC	MC	19	W, 3-0
10/27	Madison Beck	HC	NU	40	W, 1-0
11/3	Megan Warrener	UConn	NU	23	W, 3-0
11/4	Tia Chan	UConn	NU	22	W, 1-0
11/4	Hope Walinski	PC	UNH	15	W, 1-0
11/10	Tia Chan	UConn	ME	21	W, 1-0
11/17	Megan Warrener	UConn	HC	13	W, 3-0
11/17	Julia Bachetti	ME	UVM	19	W, 3-0
11/17	Calli Hogarth	MC	PC	37	W, 1-0
11/21	Sedona Blair	UNH	Harvard	19	W, 3-0
11/25	Hope Walinski	PC	Brown	21	W, 1-0
11/28	Brooke Loranger	HC	Assumption	19	W, 5-0
12/1	Sedona Blair	UNH	HC	19	W, 1-0
12/2	Julia Bachetti	ME	HC	29	W, 6-0
12/2	Sedona Blair	UNH	UVM	25	W, 1-0
12/8	Mirellie Kingsley	PC	UNH	27	W, 6-0
1/12	Grace Campbell	BC	HC	25	W, 5-0
1/12	Jorden Mattison	ME	NU	21	W, 1-0
1/12	Hope Walinski	PC	UVM	20	W, 6-0
1/13	Calli Hogarth	MC	HC	31	W, 2-0
1/16	Gwyneth Philips	NU	Harvard	9	W, 1-0
1/21	Megan Warrener	UConn	UNH	20	W, 4-0
1/26	Tia Chan	UConn	UVM	16	W, 3-0
1/26	Paige Taborski	NU	MC	12	W, 4-0
1/27	Jessie McPherson	UVM	UConn	18	T, 0-0
1/27	Tia Chan	UConn	UVM	15	T, 0-0
2/2	Grace Campbell	BC	BU	18	W, 3-0
2/3	Callie Shanahan	BU	BC	19	W, 3-0

40 + SAVES

Date	Goalie	Team	Opponent	Svs.	Result
10/27	Madison Beck	HC	NU	40	W, 1-0
11/3	Sedona Blair	UNH	PC	40	W, 3-1
1/2	Gwyneth Philips	NU	Yale	45	W, 2-1
1/23	Grace Campbell	BC	Harvard	47	T, 2-2

HAT TRICKS:

Date	Player	Team	Opponent	Result
9/30	Nicole Kelly	UNH	St. Michael's	W, 6-1
10/7	Ida Kuoppala	Maine	Stonehill	W, 7-1
10/27	Natalie Mlynkova	UVM	UNH	W, 6-3
10/28	Peyton Anderson	NU	HC	W, 4-2
11/3	Ann-Frederique Guay	ME	BC	W, 4-3
11/4	Lacey Martin	BU	MC	W, 4-3
12/9	Haley Ryan	ME	Dartmouth	W, 6-3

OVERTIME GOALS:

Date	Player	Team	Opponent	Result
10/7	Alex Ferguson	MC	at Syracuse	W, 2-1
10/13	Abbey Newhook	BC	UConn	W, 4,3
10/14	Millie Sirum	HC	Brown	W, 2-1
10/27	Alexis Perry	HC	NU	W, 1-0
10/28	Jade Arnone	BC	MC	W, 3-2
10/28	Evelyne Blais-Savoie	UVM	UNH	W, 2-1
11/3	Catherine Foulem	BU	MC	W, 2-1
11/3	Millie Sirum	HC	UVM	W, 3-2
11/4	Tamara Giaquinto	BU	MC	W, 4-3
12/1	Camryn Wong	UConn	MC	W, 2-1
12/1	Skylar Irving	NU	BU	W, 2-1
1/12	Ida Kuoppala	ME	NU	W, 1-0
1/13	Lindsay Bochna	PC	UVM	W, 4-3
1/23	Skylar Irving	NU	BU	W, 2-1
2/1	Jules Constantinople	NU	UNH	W, 3-2
2/2	Teghan Inglis	MC	ME	W, 3-2
2/3	Ashley Allard	UConn	PC	W, 2-1
2/3	Katy Knoll	NU	UNH	W, 4-3
2/3	Natalie Zarcone	UVM	HC	W, 3-2

2023-24 INDIVIDUAL HIGHS:

Goals: 3 - Several; Last by Haley Ryan (12/9 vs. Dartmouth)

Assists: 3 - Several; Last by Charli Kettyle, UNH (1/26/24 vs Maine)

Points: 4 - Several; Last by - Molly Jordan, BC (1/19/24 vs Merrimack)

Saves: 47; Grace Campbell, BC (1/23 vs Harvard, SOL, 2-2)

Team Highs:

Goals: 7; Several times, last by Maine (10/7/23 at Stonehill)

Consecutive Wins: 8; UConn (10/21/23 - 11/18/23 - 8-0-0)

Unbeaten streak: 9; UConn (1/9/24 - present, 7-0-2)
8; UConn (10/21/23 - 11/18/23 - 8-0-0)

THE LAST TIME:

A player had four goals:

4 - Kira Juodikis, UNH (2/5/23 vs. HC)

In league play: 4 - Kira Juodikis, UNH (2/5/23 vs. HC)

A rookie had a hat trick:

Gaby Roy, BC (11/20/20 vs. UNH)

In league play: Gaby Roy, BC (11/20/20 vs. UNH)

A defender had a hat trick:

Madison Cardaci, BU (01/27/23 vs MC)

In league play: Madison Cardaci, BU (01/27/23 vs. MC)

A goaltender recorded 50 saves:

56 - Emma Groski, MC (2/25/23 vs Northeastern)

In league play: 56 - Jada Brenon, HC (2/5/22 vs PC)

A team won 10 games in a row:

22 - Northeastern (11/18/22 - 3/11/23)

In league play: Northeastern, 16 games (11/18/22 - 10/7/23, 16-0-0)

A team was unbeaten in 10 straight games:

10 - Boston College (12/1/23 - 1/26/24, 5-0-5)

22 - Northeastern (11/18 - 3/11/23, 22-0-0)

In league play: 18 - UConn (10/21/23 - present, 15-0-3)

A team recorded 50 shots on goal:

61 - Northeastern (2/25/23 vs Merrimack (Playoffs))

In league play: 51 - Northeastern (01/27/23 vs HC)

