



WOMEN'S WEEKLY

contact: Brian Smith | bsmith@hockeyeastonline.com | 339.227.2988 | @BriSMiHE

Hockey East Association | 11 Chestnut Street | Amesbury, MA | 01913

FOR IMMEDIATE RELEASE: NOVEMBER 23, 2021

Vermont Enjoys Historic Run in Five-Point Road Weekend

Maine Extends Unbeaten Streak to Four; Northeastern Unbeaten in 11

RECENT RESULTS

Friday 11/19

Hockey East

at #10 BC 4, HC 2
at ME 5, BU 1
PC 3 at UConn 3 (OT)
at #4 NU 4, UNH 1

Saturday 11/20

Hockey East

at #4 NU 3, UConn 2
UVM 5 at MC 4 (OT)

Sunday 11/21

Hockey East

at ME 3, PC 2
UVM 5 at MC 2
at BU 5, #10 BC 4

HOCKEY EAST HEADLINES

Vermont earned five Hockey East points in a road weekend at Merrimack. After a 5-4 overtime win Saturday, the Catamounts took a 5-2 victory the next day. **Maude Poulin-Labelle** had a hat trick and **Theresa Schafzahl** registered five points as Vermont. Schafzahl assisted on the game-winning overtime goal on Saturday and on Sunday she became the first Catamount in program history to have five points in a single game. Poulin-Labelle also became the fourth Catamount in program history to have two or more hat tricks in their career.

#4 Northeastern earned six Hockey East points and moved their unbeaten run to 11 straight games with victories over New Hampshire and UConn. **Chloe Aurard** returned from international duty with Team France with three goals on the weekend, including Friday's game-winner. **Skylar Fontaine** notched three points on the weekend, all assists, including the primary helper on the game-tying and game-winning goals.

Maine pushed its unbeaten streak to four consecutive games in league play with victories over Boston University and Providence. **Mira Seregely** scored the game-winning goal in Maine's 3-2 victory over the Friars. It was her first collegiate goal. **Loryn Porter** totaled 63 saves on 66 shots with a pair of wins.

Boston University split a weekend set, falling at Maine, 5-1, before returning home to take a 5-4 win over #10 Boston College. **Courtney Correia** tallied a goal and an assist, including the game-winning goal with 3:47 remaining in regulation to break a 4-4 tie with the Eagles.

2021-22 ARMY ROTC STANDINGS

Rk	Team	Hockey East							Overall				
		GP	Pts	W	L	T	OW	OL	SW	GP	W	L	T
1	Northeastern	14	35	11	2	1	0	0	1	15	12	2	1
2	Boston University	13	22	6	4	3	0	0	1	15	7	5	3
3	UConn	11	19	6	3	2	1	0	0	16	11	3	2
4	Boston College	10	17	6	4	0	1	0	0	13	8	5	0
5	Merrimack	12	14	4	7	1	1	1	1	16	4	11	1
	Maine	10	14	4	5	1	0	0	1	15	6	8	1
7	Vermont	8	13	4	3	1	1	1	0	13	6	6	1
	Providence	9	13	3	4	2	0	1	1	13	4	5	4
9	New Hampshire	11	12	3	7	1	0	1	1	12	3	7	2
10	Holy Cross	10	3	1	9	0	0	0	0	14	2	12	0



ARMY ROTC



HOCKEY EAST PLAYER OF THE WEEK

Theresa Schafzahl VERMONT

Theresa Schafzahl (Sr., F; Weiz, Austria) Returning from Olympic qualifying, Schafzahl had two goals and five assists for seven points in UVM's weekend sweep of Merrimack. She assisted on the game-winning overtime goal on Saturday and on Sunday she became the first Catamount in program history to have five points in a single game.



Maude Poulin-Labelle VERMONT

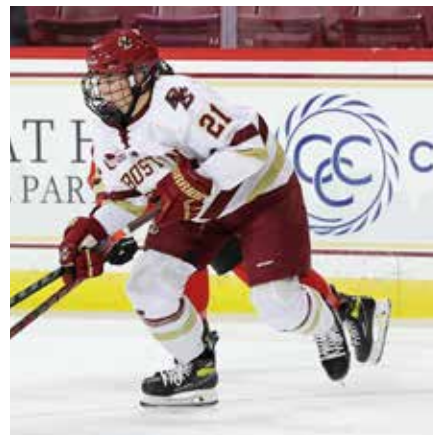
Maude Poulin-Labelle (Sr., D; Sherbrooke, Que.) had five points as Vermont swept Merrimack this weekend. On Sunday she became the fourth Catamount in program history to have two or more hat tricks in their career, scoring three times against the Warriors.



PRO AMBITIONS ROOKIE OF THE WEEK

Abby Newhook BOSTON COLLEGE

Abby Newhook (Fr., F; St. John's, New.) had two points on one goal and one assist in a 4-2 victory over Holy Cross. She scored the game-winning goal against the Crusaders at 6:32 of the third period on a televised game on NESN. She finished the two-game weekend with five shots on goal and picks up Pro Ambitions Rookie of the Week for the second consecutive time and the third overall nod this season.



HOCKEY EAST DEFENDER OF THE WEEK

Julia Shaunessy BOSTON UNIVERSITY

Julia Shaunessy (So., D; Marshfield, Mass.) in the Terriers' 5-4 win over #10 Boston College. She notched a career-high four assists, all of which were the primary helper, and was a plus-three against the Eagles. Shaunessy also generated four shots on goal. She now has six assists this year.



HOCKEY EAST GOALTENDER OF THE WEEK

Loryn Porter MAINE

Loryn Porter (Gr., G; North Bay, Ont.) totaled 63 saves on 66 shots with a pair of wins. She picked up 22 saves on 23 shots faced in the victory over Boston University on Friday. She followed up the win with her second win of the weekend, a 41-save performance on 43 shots faced against Providence.



HOCKEY EAST WEEKLY TOP PERFORMERS

Kelly Browne, BC (Sr., F; Burlington, Mass.) Scored three goals in a 1-1-0 weekend for Boston College. She won 24 face off wins and had 11 shots on goal.

Sidney Fess, BC (So., D; Clifton Park, N.Y.) Scored her first career goal on Nov. 21 against Boston University.

Abigail Levy, BC (Sr., G; Congers, N.Y.) Stopped 77 shots in a split weekend, including a 40-save performance on Saturday.

Courtney Correia, BU (Sr., F; Whitby, Ont.) Tallied a goal and an assist, including the game-winning goal with 3:47 remaining in regulation to break a 4-4 tie with #10 Boston College in a thrilling 5-4 triumph over the Eagles on Sunday. Correia generated five shots on goal and was a plus-two.

Christina Vote, BU (Fr., F; Arlington, Mass.) Lit the lamp in the third period during the Terriers' 5-4 win over #10 Boston College. She was a plus-one and had two shots on goal in the victory.

Mary Edmonds, HC (Jr., F; Fairfield, Conn.) Had two points off a goal and an assist at Boston College on Friday afternoon. It was the first multi-point game of her career.

Mira Seregely, ME (Fr., F; Budapest, Hungary) Scored the game-winning goal in Maine's 3-2 victory over Providence. It was her first collegiate goal and it extended the Black Bears conference winning streak to four.

Taylor Leech, ME (Gr., D; Bowdoinham, Maine) Netted a goal in in each of Maine's games on the weekend. She scored the game-winning goal against Boston University on Friday. She then scored her second of the weekend and picked up an assist in the contest on Sunday in the victory over Providence.

Kira Juodikis, UNH (Fr., F; LaSalle, Ont.) In her return to the lineup after missing two games due to injury, Juodikis scored a goal in UNH's 4-1 setback at #8 Northeastern. The UNH rookie scored her team-leading seventh goal of the season to lift the Wildcats within 3-1 at 10:23 of the third period. She finished the game with three shots and a plus-one rating. Juodikis has recorded a point in 7 of 10 games this season.

Maddie Truax, UNH (Sr., D; Gardner, Mass.) Recorded a season-high eight blocks in last Friday's game at fourth-ranked Northeastern. She also had an even on-ice rating. Truax is atop the Hockey East leaderboard, and third in the nation, with 38 blocks.

Ava Boutilier, UNH (Sr., G; Charlottetown, P.E.I.) Registered a season-high 42 saves in UNH's 4-1 loss at fourth-ranked Northeastern last Friday. She made 16 saves in the first period, followed by 19 in the second and seven more in the final frame. Two of the goals against Boutilier were scored on the power play.

Chloe Aurard, NU (Sr., F; Villard-de-Lans, France) Returning from international duty with Team France, Aurard led the Huskies to a 2-0-0 weekend with three goals on the weekend; she notched two against UNH on Friday, including the game-winner, and notched the opening goal of a three-goal comeback on Saturday against UConn.

Skylar Fontaine, NU (Gr., D; East Greenwich, R.I.) Notched three points on the weekend, all assists, in a 2-0-0 weekend. Fontaine was instrumental in NU's 3-goal comeback against UConn, notching the primary assist on the game-tying and game-winning goals.

Aerin Frankel, NU (Gr., G; Briarcliff Manor, N.Y.) Posted another two wins in net for the Huskies with a .927 save percentage and a 1.50 GAA. She stopped 38 of 41 shots faced on the weekend.

Lindsay Bochna, PC (So., F; Toronto, Ont.) Put up two points against UConn with a goal and an assist on Friday nights matchup. Secured the extra point for Providence in the fourth round of shootouts, 1-0. Added a goal in the Friars 3-2 loss against Maine on Sunday in the last 26 seconds of play. Is leading the Friars in points this season (10).



HOCKEY EAST SCORING LEADERS

Rk.	Player	School	Yr.	Pos.	GP	Pt./G	G-A-P
1.	Maureen Murphy	NU	Sr	F	14	1.21	8-9-17
2.	Skylar Fontaine	NU	Sr	D	14	1.07	2-13-15
3.	Courtney Correia	BU	Sr	F	13	1.00	6-7-13
4.	Julia Nearis	BU	Jr	F	11	1.00	3-8-11
5.	Katie Kaufman	MC	Jr	F	8	1.25	6-4-10
	Kira Juodikis	UNH	Fr	F	9	1.11	7-3-10
	Abby Newhook	BC	Fr	F	10	1.00	6-4-10
	Chloe Aurard	NU	Sr	F	10	1.00	7-3-10
	Taylor Wabick	UC	Sr	D	11	0.91	1-9-10
	Teghan Inglis	MC	Jr	D	12	0.83	7-3-10
	Maddie Mills	NU	Sr	F	14	0.71	6-4-10



STOP IT GOALTENDING LEADERS

Conference Goals Against Average

Rk.	Name	School	MIN	GA	GAA
1.	Aerin Frankel	NU	715:50	11	0.92
2.	Blanka Skodova	UVM	305:30	9	1.77
3.	S. Carpentier-Yelle	UC	627:30	20	1.91
4.	Mireille Kingsley	PC	186:06	6	1.93
5.	Loryn Porter	ME	520:22	17	1.96

Conference Save Percentage

Rk.	Name	School	SVS	GA	SV%
1.	Aerin Frankel	NU	274	11	.961
2.	Mireille Kingsley	PC	109	6	.948
3.	Loryn Porter	ME	268	17	.940
4.	Abigail Levy	BC	351	23	.939
5.	Sandra Abstreiter	PC	172	12	.935



PNC BANK THREE STARS AWARD

At the conclusion of every Hockey East game, the "PNC Bank Three Stars of The Game" are selected by the members of the media. Season leaders in 2021-22 include:

Player	School	Cl.	Pos.
Sandra Abstreiter	PC	Sr	G
Callie Shanahan	BU	Fr	G
Viki Harkness	UConn	Sr	F
Alexie Guay	BC	Jr	D



HOCKEY EAST WEEKLY AWARDS

HOCKEY EAST

PLAYER OF THE WEEK

Week	Player
Sept. 27	Natalie Snodgrass, UC
Oct. 4	Chloe Aurard, NU
Oct. 11	Viki Harkness, UC
Oct. 18	Maureen Murphy, NU
Oct. 25	Hannah Bilka, BC
Nov. 1	Katie Kaufman, MC
Nov. 8	Skylar Fontaine, NU
Nov. 15	Maureen Murphy, NU
Nov. 22	Maude Poulin-Labelle, UVM Theresa Schafzahl, UVM

PRO AMBITIONS

ROOKIE OF THE WEEK

Week	Player
Sept. 27	Alex Pongo, MC
Oct. 4	Callie Shanahan, BU
Oct. 11	Christina Vote, BU
Oct. 18	Abby Newhook, BC
Oct. 25	Kira Juodikis, UNH
Nov. 1	Kira Juodikis, UNH
Nov. 8	Alexa Pongo, MC
Nov. 15	Abby Newhook, BC
Nov. 22	Abby Newhook, BC

HOCKEY EAST

DEFENDER OF THE WEEK

Week	Player
Sept. 27	Chloe Gonsalves, UC
Oct. 4	Alexie Guay, BC
Oct. 11	Taylor Leech, ME
Oct. 18	Teghan Inglis, MC
Oct. 25	Nadia Mattivi, BU
Nov. 1	Brooke Hobson, NU
Nov. 8	Taylor Wabick, UC
Nov. 15	Brooke Hobson, NU
Nov. 22	Julia Shaunessy, BU

HOCKEY EAST

GOALTENDER OF THE WEEK

Week	Player
Sept. 27	Megan Warrener, UC
Oct. 4	Aerin Frankel, NU
Oct. 11	Sandra Abstreiter, PC
Oct. 18	Samantha Carpentier-Yelle, UC
Oct. 25	Blanka Škodová, UVM
Nov. 1	Emma Gorski, MC
Nov. 8	Aerin Frankel, NU
Nov. 15	Mireille Kingsley, PC
Nov. 22	Loryn Porter, ME

USA Today/USA Hockey Magazine Women's College Hockey Poll - 11/23

Rk.	School, Pts. (FPV)	Record	LW
1.	Wisconsin, 190 (19)	15-0-1	1
2.	Ohio State, 171	12-3-0	2
3.	Minnesota, 150	11-3-0	3
4.	Northeastern, 121	12-2-1	4
5.	Quinnipiac, 113	13-1-2	7
6.	Minnesota Duluth, 90	6-4-0	6
7.	Yale, 66	7-2-1	NR
8.	Colgate, 61	13-4-1	5
9.	Clarkson, 43	12-2-2	8
10.	Princeton, 24	5-2-1	9

Other Receiving Votes: Harvard, 10; **Boston College, 4**; UConn, 1; Cornell, 1.

USCHO.com Women's College Hockey Poll - 11/22

Rk.	School, Pts. (FPV)	Record	LW
1.	Wisconsin, 150 (15)	15-0-1	1
2.	Ohio State, 135	12-3-0	2
3.	Minnesota, 115	11-3-0	3
4.	Northeastern, 103	12-2-1	4
5.	Quinnipiac, 93	13-1-2	6
6.	Yale, 63	7-2-2	9
7.	Minnesota Duluth, 60	6-4-0	8
8.	Colgate, 49	13-4-1	5
9.	Clarkson, 33	12-2-2	7
10.	Princeton, 12	5-2-1	10
	Harvard, 12	6-3-0	NR

Other Receiving Votes: **Boston College, 1**.



UPCOMING SCHEDULE

Tuesday 11/23

Harvard at UNH - 7:00PM

Wednesday 11/24

MC at Brown - 3:00PM

Friday 11/26

BC vs Colgate - 1:00PM !
Clarkson at ME - 2:00PM
Sacred Heart at UConn - 3:00PM \$
NU at Princeton - 3:00PM
UNH at Union - 6:00PM
Syracuse at UVM - 7:00PM

! Smashville Showcase at Ford Ice Center, in Antioch, Tenn.
\$ Nutmeg Classic at UConn

Saturday 11/27

PC at Brown - 2:00PM
Clarkson at ME - 2:00PM
UNH at Union - 3:00PM
NU at Princeton - 3:00PM
Syracuse at UVM - 7:00PM
BC vs Mercyhurst/Minnesota - TBD !
QU/Yale at UConn - TBD @

! Smashville Showcase at Ford Ice Center, in Antioch, Tenn.
\$ Nutmeg Classic at UConn

NEWS & NOTES

The Hockey East calendar flips to non-conference match ups over the Thanksgiving holiday with only one league week-end scheduled until January.

Boston College travels to Tennessee for their return to the Smashville Showcase at Ford Ice Center. Along with the Eagles, who have been ranked in nearly every national poll this season, the tournament will feature #8 Colgate and #3 Minnesota.

Maine extended their season-best four-game win streak with victories over Boston University (5-1) and Providence College (3-2). Maine had seven different players score goals, with Taylor Leech being the only player to score twice for the Black Bears. **Loryn Porter** stopped 63 of 66 shots on the weekend as she picked up both victories for her team.

New Hampshire's **Brianna Brooks** (Whitby, Ontario) leads Hockey East with a .661 winning percentage (125 of 189) in the faceoff circle. She won 12 of 18 faceoffs last Friday at Northeastern.

Four Northeastern Huskies totaled at least three points on the weekend, along with **Chloe Aurard** and **Skylar Fontaine** there was **Maureen Murphy**, now on a six-game point streak, had a goal and two assists on the weekend. Along with Fontaine's assist performance, assistant captain **Alina Mueller** also dished out three helpers on the weekend. She has now tallied points in every game but one since her unofficial return at Providence.





Boston College
8-5-0
(6-4-0 HE)

SEPTEMBER

30 at Penn State W, 2-1 (OT)

OCTOBER

1 at Penn State W, 2-1
9 at Merrimack * W, 2-1
15 NEW HAMPSHIRE * W, 2-1
16 at New Hampshire * W, 3-2
23 MAINE * W, 5-2
29 NORTHEASTERN * L, 4-2
30 at Northeastern * L, 3-0

NOVEMBER

9 at Harvard 7:00PM
12 PROVIDENCE * L, 2-1
13 at Providence * W, 2-1 (OT)
19 HOLY CROSS * W, 4-2
21 at Boston University * L, 5-4
26 COLGATE 1:00PM
27 MERCY/MINN TBA

DECEMBER

3 at Maine * 2:00PM
4 at Maine * 2:00PM
10 at Vermont * 2:00PM

JANUARY

3 at Providence * TBA
7 BOSTON UNIVERSITY * TBA
8 at Boston University * 3:00PM
14 at UConn * 6:00PM
15 UCONN * 2:00PM
21 at Holy Cross * 6:00PM
22 HOLY CROSS * 2:00PM
28 at UConn * 6:00PM
29 NORTHEASTERN * 2:00PM

FEBRUARY

1 at Northeastern * 8:00PM
4 at New Hampshire * 6:00PM
8 vs BU/Harvard # TBA
11 MERRIMACK * 2:00PM
12 at Merrimack * 4:00PM
18 VERMONT * TBA
19 VERMONT * TBA

* Hockey East
Beanpot



Boston University
7-5-3
(6-4-3 HE)

OCTOBER

1 at New Hampshire * W, 4-2
2 NEW HAMPSHIRE * W, 5-0
8 NORTHEASTERN * W, 2-1
9 at New Hampshire * T, 3-3 (OT)
15 MERRIMACK * T, 4-4 (OT)
22 at Rensselaer L 4-2
23 at Union W, 4-1
29 VERMONT * T, 1-1 (OT)
31 at Providence * W, 2-1

NOVEMBER

5 at UConn * L, 2-1
6 UCONN * L, 1-0
11 at Holy Cross * L, 2-0
12 HOLY CROSS * W, 3-1
19 at Maine * L, 5-1
21 BOSTON COLLEGE * W, 5-4

DECEMBER

4 MERRIMACK * 3:00PM
5 at Merrimack * 2:00PM
8 at Yale 7:00PM

JANUARY

1 vs Syracuse 4:00PM
2 vs PSU/St. Cloud TBD
7 at Boston College * TBD
8 BOSTON COLLEGE * 3:00PM
14 MAINE * 7:00PM
15 MAINE * 3:00PM
21 at Northeastern * 6:00PM
22 NORTHEASTERN * 7:30PM
28 at Holy Cross * 6:00PM

FEBRUARY

1 vs Harvard # 5:00PM
4 UCONN * 7:00PM
8 vs BC/NU # TBD
11 at Vermont * 2:00PM
12 at Vermont * 2:00PM
18 at Providence * 6:00PM
19 PROVIDENCE * 3:00PM

* Hockey East
Beanpot



UConn
11-3-2
(6-3-2 HE)

SEPTEMBER

18 at Quinnipiac (ex) L, 3-1
24 LONG ISLAND W, 3-1
25 LONG ISLAND W, 2-0

OCTOBER

8 at RIT W, 4-3
9 at RIT W, 6-2
15 at Maine * W, 1-0
16 MERRIMACK * W, 5-3
22 at Merrimack * W, 3-2
29 MERRIMACK * L, 3-0
30 VERMONT * W, 2-1 (OT)

NOVEMBER

5 BOSTON UNIVERSITY * W, 2-1
6 at Boston University * W, 1-0
9 BROWN W, 3-0
12 MAINE * L, 1-0
13 MAINE * T, 4-4 (OT)
19 PROVIDENCE * T, 3-3 (OT)
20 at Northeastern * L, 3-2
26 SACRED HEART 3PM/6:30PM
27 QUINNIPIAC/YALE 3PM/6:30PM

DECEMBER

3 HOLY CROSS * 6:30PM
4 at Holy Cross * 3:00PM

JANUARY

7 at Vermont * 6:00PM
8 at Vermont * 6:00PM
14 BOSTON COLLEGE * 6:00PM
15 at Boston College * 2:00PM
21 NEW HAMPSHIRE * 6:00PM
22 NEW HAMPSHIRE * 3:00PM
28 BOSTON COLLEGE * 6:00PM
29 at Holy Cross * 1:00PM

FEBRUARY

4 at Boston University * 7:00PM
5 at New Hampshire * 2:00PM
11 PROVIDENCE * 6:00PM
12 at Providence * 3:00PM
18 NORTHEASTERN * 6:00PM
19 at Northeastern * 3:00PM

* Hockey East



Holy Cross
2-12-0
(1-9-0 HE)

OCTOBER

1 NORTHEASTERN * L, 5-0
2 at Northeastern * L, 6-0
8 at Penn State L, 5-1
9 at Penn State L, 6-2
15 FRANKLIN PIERCE W, 2-0
16 at Franklin Pierce L, 4-0
22 at Vermont * L, 4-2
24 at Northeastern * L, 3-1
29 MAINE * L, 4-2
31 at New Hampshire * L, 4-2

NOVEMBER

6 at Merrimack * L, 5-3
11 BOSTON UNIVERSITY * W, 2-0
12 at Boston University * L, 3-1
19 at Boston College * L, 4-2

DECEMBER

3 at UConn * 6:30PM
4 UCONN * 1:00PM
10 BROWN 6:00PM

JANUARY

2 PROVIDENCE * 4:30PM
7 at Maine * 2:00PM
8 at Maine * 2:00PM
14 VERMONT * 1:00PM
15 VERMONT * 1:00PM
21 BOSTON COLLEGE * 6:00PM
22 at Boston College * TBD
28 BOSTON UNIVERSITY * 6:00PM
29 UCONN * TBD

FEBRUARY

5 at Providence * TBD
6 PROVIDENCE * 2:00PM
11 at New Hampshire * 6:00PM
12 NEW HAMPSHIRE * TBD
18 at Merrimack * TBD
19 MERRIMACK * 1:00PM

* Hockey East



Maine
6-8-1
(4-5-1 HE)

SEPTEMBER

24 at Quinnipiac L, 3-2
25 at Quinnipiac L, 5-1

OCTOBER

2 Saint Anselm L, 4-2
8 at Long Island W, 4-2
9 at Long Island W, 3-2
15 UCONN * L, 1-0
16 NORTHEASTERN * L, 3-0
22 at New Hampshire * L, 4-1
23 at Boston College * L, 5-2
29 at Holy Cross * W, 4-2
30 at Merrimack * L, 2-0

NOVEMBER

12 at UConn * W, 1-0
13 at UConn * T, 4-4 (OT)
19 BOSTON UNIVERSITY * W, 5-1
20 PROVIDENCE * W, 3-2
26 CLARKSON 2:00PM
27 CLARKSON 2:00PM

DECEMBER

3 BOSTON COLLEGE * 2:00PM
4 BOSTON COLLEGE * 2:00PM

JANUARY

2 at Vermont * 1:00PM
7 HOLY CROSS * 2:00PM
8 HOLY CROSS * 2:00PM
14 at Boston University * 7:00PM
15 at Boston University * 3:00PM
21 MERRIMACK * 6:00PM
22 MERRIMACK * 2:00PM
28 at Providence * 6:00PM
29 at Providence * 3:00PM

FEBRUARY

4 VERMONT * 6:00PM
5 VERMONT * 2:00PM
11 at Northeastern * 6:00PM
12 at Northeastern * 2:30PM
18 NEW HAMPSHIRE * 2:00PM
19 NEW HAMPSHIRE * 2:00PM

* Hockey East



Merrimack
4-11-1
(4-7-1 HE)

SEPTEMBER

24 MINNESOTA STATE L, 3-0
25 MINNESOTA STATE L, 9-3

OCTOBER

1 WISCONSIN L, 4-0
2 WISCONSIN L, 5-0
9 BOSTON COLLEGE * L, 2-1
15 at Boston University * T, 4-4 (OT)
17 at UConn * L, 5-3
22 UCONN * L, 3-2
24 at Vermont * L, 2-1
29 at UConn * W, 3-0
30 MAINE * W, 2-0

NOVEMBER

6 HOLY CROSS * W, 5-3
12 NEW HAMPSHIRE * W, 3-2 (OT)
13 at New Hampshire * L, 2-1
20 VERMONT * L, 5-4 (OT)
21 VERMONT * L, 5-2
24 at Brown 3:00PM
27 at Providence * 6:00PM

DECEMBER

4 at Boston University * 3:00PM
5 BOSTON UNIVERSITY 2:00PM
11 LONG ISLAND (EX.) 2:00PM

JANUARY

1 at RPI 3:00PM
2 at RPI 3:00PM
7 at Northeastern * 3:00PM
8 NORTHEASTERN * 2:00PM
14 at Providence * 6:00PM
15 PROVIDENCE * 4:00PM
21 at Maine * 2:00PM
22 at Maine * 2:00PM
28 NEW HAMPSHIRE * 6:00PM

FEBRUARY

4 NORTHEASTERN * 4:00PM
11 at Boston College * 2:00PM
12 BOSTON COLLEGE * 4:00PM
18 HOLY CROSS * 2:00PM
19 at Holy Cross * 1:00PM

* Hockey East



New Hampshire
3-7-2
(3-7-1 HE)

OCTOBER

1 BOSTON UNIVERSITY * L, 4-2
2 at Boston University * L, 5-0
8 at Providence * L, 3-1
9 BOSTON UNIVERSITY * T, 3-3 (OT)
15 at Boston College * L, 2-1
16 BOSTON COLLEGE L, 3-2
22 MAINE * W, 4-1
31 HOLY CROSS * W, 4-2

NOVEMBER

6 at Franklin Pierce T, 3-3 (OT)
12 at Merrimack * L, 3-2 (OT)
13 MERRIMACK * W, 2-1
19 at Northeastern * L, 4-1
23 HARVARD * 7:00PM
26 at Union 6:00PM
27 at Union 3:00PM

DECEMBER

3 VERMONT * 6:00PM
4 VERMONT * 2:00PM
9 PENN STATE 6:00PM
10 PENN STATE 3:00PM

JANUARY

2 at Dartmouth 2:00PM
7 PROVIDENCE * 2:00PM
8 PROVIDENCE * 2:00PM
14 at Northeastern * 6:00PM
15 NORTHEASTERN * 3:00PM
21 at UConn * 6:00PM
22 at UConn * 3:00PM
28 at Merrimack * 6:00PM
30 at Vermont * 2:00PM

FEBRUARY

4 BOSTON COLLEGE * 6:00PM
5 UCONN * 2:00PM
11 HOLY CROSS * 6:00PM
12 at Holy Cross * TBA
18 at Maine * 2:00PM
19 at Maine * 2:00PM

* Hockey East



Northeastern
12-2-1
(11-2-1 HE)

OCTOBER

1 at Holy Cross * W, 5-0
2 HOLY CROSS * W, 6-0
8 at Boston University * L, 2-1
9 at Providence * L, 3-0
13 at Saint Anselm W, 5-0
16 at Maine * W, 3-0
24 HOLY CROSS * W, 3-1
29 at Boston College * W, 4-2
30 BOSTON COLLEGE * W, 3-0

NOVEMBER

5 at Providence * W, 5-1
6 PROVIDENCE * T, 1-1 (SOW)
12 at Vermont * W, 3-0
13 at Vermont * W, 3-1
19 NEW HAMPSHIRE * W, 4-1
20 UCONN * W, 3-2
26 at Princeton 3:00PM
27 at Princeton 3:00PM

DECEMBER

4 CORNELL 2:00PM
5 CORNELL 2:00PM

JANUARY

7 MERRIMACK * 2:00PM
8 at Merrimack * 2:00PM
14 NEW HAMPSHIRE * 6:00PM
15 at New Hampshire * 3:00PM
18 at Boston College * 6:00PM
21 BOSTON UNIVERSITY * 4:00PM
22 at Boston University * 7:30PM
28 VERMONT * 2:00PM

FEBRUARY

1 BOSTON COLLEGE # TBA
4 at Merrimack * 4:00PM
8 BU/Harvard # TBA
11 MAINE * 6:00PM
12 MAINE * 2:30PM
18 at UConn * 6:00PM
19 UCONN * 3:00PM

* Hockey East
Beanpot



Providence
4-5-4
(3-4-2 HE)

OCTOBER

8 NEW HAMPSHIRE * W, 3-1
9 NORTHEASTERN * W, 3-0
15 QUINNIPIAC T, 2-2 (OT)
16 at Quinnipiac T, 1-1 (OT)
22 at Union W, 2-1
23 at RPI L, 2-0
31 BOSTON UNIVERSITY * L, 2-1

NOVEMBER

5 NORTHEASTERN * L, 5-1
6 at Northeastern * T, 1-1 (SOL)
13 BOSTON COLLEGE * W, 2-1
19 at UConn * T, 3-3 (OT)
21 at Maine * W, 3-2
27 at Brown 3:00PM
30 MERRIMACK * 6:00PM

DECEMBER

3 PRINCETON 2:00PM
4 PRINCETON 2:00PM
31 VERMONT * 1:00PM

JANUARY

2 at Holy Cross * TBA
3 BOSTON COLLEGE * TBA
7 at New Hampshire * 2:00PM
8 at New Hampshire * 2:00PM
14 MERRIMACK * 6:00PM
15 at Merrimack * 4:00PM
21 at Vermont * TBA
22 at Vermont * TBA
28 MAINE * 6:00PM
29 MAINE * 3:00PM

FEBRUARY

5 HOLY CROSS * 2:00PM
6 at Holy Cross * TBA
11 at UConn * 6:00PM
12 UCONN * 3:00PM
18 BOSTON UNIVERSITY * 6:00PM
19 at Boston University * TBA

* Hockey East



Vermont
6-6-1
(4-3-1 HE)

SEPTEMBER

25 SAINT MICHAEL'S (ex) W, 12-0

OCTOBER

1 RENSSELAER W, 3-2 (OT)
2 RENSSELAER W, 4-1
9 COLGATE L, 3-0
10 COLGATE L, 5-1
22 HOLY CROSS * W, 4-2
24 MERRIMACK * W, 2-1
29 at Boston University * T, 1-1 (OT)
30 at UConn * L, 2-1 (OT)

NOVEMBER

9 at Dartmouth L, 3-2 (OT)
12 NORTHEASTERN * L, 3-0
13 NORTHEASTERN * L, 3-1
20 at Merrimack * W, 5-4 (OT)
21 at Merrimack * W, 5-2
26 SYRACUSE 7:00PM
27 SYRACUSE 7:00PM

DECEMBER

3 at New Hampshire * 6:00PM
4 at New Hampshire * 2:00PM
10 BOSTON COLLEGE * 2:00PM
31 at Providence * 1:00PM

JANUARY

2 MAINE * 1:00PM
7 UCONN * 6:00PM
8 UCONN * 6:00PM
14 at Holy Cross * 1:00PM
15 at Holy Cross * 1:00PM
21 PROVIDENCE * 6:00PM
22 PROVIDENCE * 3:00PM
28 at Northeastern * 2:00PM
30 NEW HAMPSHIRE * 2:00PM

FEBRUARY

4 at Maine * 6:00PM
5 at Maine * 2:00PM
11 BOSTON UNIVERSITY * 2:00PM
12 BOSTON UNIVERSITY * 2:00PM
18 at Boston College * TBA
19 at Boston College * TBA

* Hockey East