



WOMEN'S HOCKEY EAST

2015-16 | MEDIA GUIDE





TABLE OF CONTENTS

The Women's Hockey East Association	2
League Directory	3
Commissioner Joe Bertagna	4
Hockey East Staff	5
Season Outlook and Coaches' Poll	7
"Skating Strides Against Breast Cancer"	8
Tournament Quick Reference	10
Season Snapshots	13-25
League Awards	28
National Awards	29
Record Book	30-32
Composite Schedule	33-34

2015-16 Women's Hockey East Yearbook

produced by the Hockey East Association

Editor:

Brian Smith

Contributors:

Joe Bertagna, Kevin Edelson, Nich Hall, Asha Michener, Bobby Mullen, Doug Poole, Laura Reed, Noah Smith, Bobby Smith, USA Hockey, and Kathy Wynters



GAME DAY DIRECTORY

PRESS BOX NUMBERS

Boston College	(617) 552-4747
Boston University	(617) 437-0102
Connecticut	(860) 486-3808
Maine	(207) 581-1049
New Hampshire	(603) 862-0735
Northeastern	(617) 373-5561
Providence	(401) 865-1414
Vermont	(802) 656-4193

TEAM WEBSITES

Boston College	bceagles.com
Boston University	goterriers.com
Connecticut	uconnhuskies.com
Maine	goblackbears.com
Merrimack	merrimackathletics.com
New Hampshire	unhwildcats.com
Northeastern	gonu.com
Providence	friars.com
Vermont	uvmathletics.com

STAFF AND CONTACT INFO

591 North Ave #2

Wakefield, MA 01880

Phone: (781) 245-2122

Fax: (781) 245-2492

HockeyEastOnline.com

Commissioner – Joe Bertagna

Associate Commissioner – Kathy Wynters

Director of Communications - Brian Smith

Supervisor of Officials – Dave Lezenski

Asst. to Supervisor of Officials – Tim Hooton

2014-5 Graduate Interns – Suzanne Friedman,

Justin Martino

Web Site Coordinator – Dan Parkhurst

HOCKEY EAST MEDIA RELATIONS AND INFORMATION SERVICES

For up-to-date information, including league news, standings, statistics and more, check out the official league website:

HockeyEastOnline.com

Press releases are sent to selected media every Monday afternoon during the season and are also available on-line for both media and public use. Any member of the media may be added to our direct distribution list upon request.

Player and team statistics are updated following every game.



WOMEN'S HOCKEY EAST ASSOCIATION

THIS IS WHEA

The Women's Hockey East Association celebrates its 14th season of play in 2015-16. Over the first 13 years, the conference has emerged as one of the top women's ice hockey conferences in the nation, having sent nine teams to the Frozen Four and 19 teams to the NCAA Tournament. In 2011 and 2013, both Boston College and Boston University advanced to the women's Frozen Four, and the Terriers moved on to the NCAA championship game on both occasions.

In 2015, the Boston University Terriers captured their fourth consecutive Hockey East tournament title and fifth in the last six years, triumphing over Boston College, 4-1. As the Hockey East Tournament Champion, BU was presented with the recently renamed Bertagna Trophy in honor of the Women's Hockey East conference's founding commissioner Joe Bertagna.

The Terriers and Eagles were also well represented in the three major awards at the postseason banquet, with BC's Alex Carpenter winning Player of the Year, BU's Victoria Bach being named Pro Ambitions Rookie of the Year honors and Eagle coach Katie King Crowley capturing coach of the year accolades for the second consecutive year. Carpenter also became the first Hockey East player to win the top award in NCAA women's hockey, winning the 2015 Patty Kazmaier Award after a record-setting season with the Eagles.

A record 106 student-athletes were named to the league's 2014-15 All-Academic Team. Each student-athlete achieved a grade point average of 3.0 or better in each of the two academic periods during which she was actively competing. Five women achieved a perfect 4.0 to share honors as the Hockey East Top Scholar-Athlete: Maine's Jessica Hall and Katy Massey, New Hampshire's Brooke Avery, Providence's Haley Frade and Vermont's Kourtney Menches. The league also honored nine student-athletes that received "Distinguished Scholar" status. Those earning "Distinguished Scholar" status achieved a 3.0 or better in each semester over four varsity seasons, and 18 others are three-time honorees.

In February 2007, the league debuted its inaugural "Skating Strides Against Breast Cancer". The one-day event was hosted by Hockey East schools as a way to establish a greater fan base, to raise needed funds, and to work with the specific charities to raise awareness for both the league and the specific cause. In the initial year, close to \$20,000 was donated back to local breast cancer charities Friends of Mel's Foundation and the American Cancer Society, vastly exceeding expectations. Last year the league raised over \$30,000 to bring the nine-year total to over \$260,000. "Skating Strides" has won two national awards at NACMA in the "Single Day Attendance Promotion" category in 2007 and 2009. The 10th annual "Skating Strides Against Breast Cancer" will have an event on each WHEA campus this season, as well as participation by all of the Hockey East men's teams over the course of two weekends.

As women's ice hockey steadily expanded from its original status as an emerging sport to its current position as an established NCAA championship sport, it became apparent that Hockey East needed to consider sponsoring a separate league to accommodate its five member schools that initially had varsity programs for women: Boston College, Maine, New Hampshire, Northeastern and Providence. Discussions about this proposed league continued until a split in the Eastern College Athletic Conference grouped the five aforementioned programs into a separate league alongside three other unaffiliated programs. This newly formed eight-team division was dubbed the ECAC Women's Eastern League. Seeking league solidarity, administrators from the five Hockey East institutions acted.

In September of 2001, the long-incubated idea became a reality when the athletic directors voted to found the new women's league under the existing Hockey East banner, with play scheduled to begin no later than the 2004-05 season. The five schools with varsity programs entered as charter members with

the stipulation that any other Hockey East school that added a varsity women's program in the future would be freely admitted to the league. In 2015-16, Hockey East welcomes Merrimack as the newest member of the women's ranks.

Expediting the process in the interest of the participating teams, the league, and the sport itself, Commissioner Joe Bertagna worked with a selected task force to successfully prepare the Hockey East women's league for launch in the 2002-03 season, two years ahead of schedule. An important part of that process was the acceptance of an invitation extended to the University of Connecticut to join the newly formed league as its sixth active member.

The triumphant effort immediately afforded the participating administrators a stronger voice in the advancement of their women's ice hockey programs and alleviated the ECAC of continuing the maintenance of the ECAC Women's Eastern League. Players, fans, coaches and administrators alike anticipated the intensified competition created by a new circle of teams that had already been such familiar rivals.

In 2005, the Women's Hockey East Association welcomed the addition of two additional teams to its growing family: Boston University and the University of Vermont. For BU, it marked the inaugural season for women's hockey as a varsity sport. The league athletic directors voted in June of 2012 to expand the playoff format, allowing all eight teams within the conference to qualify for the playoffs beginning after the 2012-13 regular season. The significant jump was contrasted with six teams and four teams in previous seasons.

While the Women's Hockey East Association is still in its infancy, its member programs have storied histories that include several championships and individual awards at the highest levels of play. The first 13 ECAC championships were shared among New Hampshire, Northeastern and Providence, all charter members of the Women's Hockey East Association. Northeastern forward Brooke Whitney was named the recipient of the 2002 Patty Kazmaier Award as the nation's top female collegiate player, an honor first won by New Hampshire's Brandy Fisher in 1998. Had the award been in existence beforehand, it surely would have been won at some point by Cammi Granato, a three-time ECAC Player of the Year who led Providence to back-to-back championships in 1992 and 1993. Five years later, in 1998, alongside nine other alums of what are now Women's Hockey East Association programs, Granato captained Team USA to the Olympic gold medal during the first Olympic tournament that featured women's ice hockey as a medal sport. Granato was inducted into the U.S. Hockey Hall of Fame in October of 2010 for her contributions to the sport. Beginning in 2009, the WHEA athletic directors voted to honor the league Player of the Year with the Cammi Granato Award.

Perhaps the proudest legacy that the Women's Hockey East Association has established is the Hockey Humanitarian Award. The most prestigious off-ice honor, and arguably the highest overall honor in the sport, the Hockey Humanitarian Award recognizes college hockey's finest citizen each year and encompasses both male and female athletes in all divisions. Its winners have demonstrated outstanding contributions to society through leadership in charity work and volunteerism. Northeastern senior forward Missy Elumba was the 2009 recipient, as the fifth Hockey East student-athlete to receive the prestigious honor. Elumba was the 14th all-time recipient and joined former Husky goaltender Chanda Gunn, who received the award in 2004, as the second athlete in Northeastern women's hockey history. BC's Sarah Carlson received the award in 2005, making Women's Hockey East the first league to boast back-to-back winners. #



MEMBER SCHOOL DIRECTORY



<p>BOSTON COLLEGE</p> <p>2601 Beacon St., Chestnut Hill, MA 02467 Athletic Director - Brad Bates Head Coach - Katie King-Crowley Media Relations - Lizz Summers (617) 552-8841 summerel@bc.edu BCEAGLES.COM</p>	<p>BOSTON UNIVERSITY</p> <p>285 Babcock St., Boston, MA 02215 Athletic Director - Drew Marrochello Head Coach - Brian Durocher Media Relations - Kevin Edelson (617) 358-4177 kedelson@bu.edu GOTERRIERS.COM</p>
<p>UCONN</p> <p>2905 Hillside Rd., Storrs, CT 06269 Athletic Director - Warde Manuel Head Coach - Chris MacKenzie Media Relations - Jennifer Greene (860) 486-1496 jennifer.greene@uconn.edu UCONNHUSKIES.COM</p>	<p>UNIVERSITY of MAINE</p> <p>5747 Memorial Gym, Orono, ME 04469 Athletic Director- Karlton Creech Head Coach - Richard Reichenbach Media Relations - Emily Holland (207) 581-4849 emily.holland@umit.maine.edu GOBLACKBEARS.COM</p>
<p>MERRIMACK COLLEGE</p> <p>315 Turnpike St., North Andover, Massachusetts Athletics Director - Jeremy Gibson Head Coach - Erin Hanlon Media Relations - Chris Aliano (978) 837-3472 chris.aliano@merrimack.edu MERRIMACKATHLETICS.COM</p>	<p>UNIVERSITY of NEW HAMPSHIRE</p> <p>145 Main St., Durham, NH 03824 Athletic Director - Marty Scarano Head Coach - Hilary Witt Media Relations - Doug Poole (603) 862-2585 doug.poole@.unh.edu UNHWILDCATS.COM</p>
<p>NORTHEASTERN UNIVERSITY</p> <p>360 Huntington Ave., Boston, MA 02115 Athletic Director - Peter Roby Head Coach - Dave Flint Media Relations - Asha Michener (617) 373-2691 a.michener@neu.edu GONU.COM</p>	<p>PROVIDENCE COLLEGE</p> <p>1 Cunningham Sq., 549 River Ave. Providence, RI 02918 Athletic Director - Robert Driscoll Head Coach - Bob Deraney Media Relations - Moira Sweeney (401) 865-1733 FRIARS.COM</p>
<p>UNIVERSITY of VERMONT</p> <p>97 Spear St., Burlington, VT 05405 Athletic Director - Bob Corran Head Coach - Jim PlumeR Media Relations - Nich Hall (802) 656-1109 nrhall@uvm.edu UVMATHLETICS.COM</p>	





COMMISSIONER JOE BERTAGNA

JOE BERTAGNA



Hockey East Commissioner Joe Bertagna is in his 34th year as a college hockey administrator. This season marks his 19th year with Hockey East, after serving in a similar capacity with the Eastern College Athletic Conference (ECAC) for 15 years. He is the longest serving commissioner in Hockey East history and is currently the lon-

gest serving hockey commissioner in the NCAA. In February of 2015, Hockey East directors extended Bertagna's contract through the 2016-17 season as a direct response to a number of triumphs for the conference, including a successful hosting of the 2015 NCAA Frozen Four in Boston, a new television contract, multiple sold-out events at Fenway Park, and the addition of the University of Notre Dame and the University of Connecticut to the conference membership.

Bertagna has carved out a unique career in the sport he first played as a freshman goaltender at Harvard University in 1969. Since starting as a player, Bertagna has served the game as player, coach, administrator and journalist. The latter role has been largely overshadowed by his coaching and administrative accomplishments but Bertagna has authored a number of books, the most recent being, "The Hockey Coaching Bible," to be released in the fall of 2015 by Human Kinetics. The collection of instructional pieces includes chapters written by a number of coaches with ties to Hockey East, including Bertagna, Mike Cavanaugh, Mark Dennehy, Nate Leaman, Jack Parker and Ben Smith.

Bertagna has also written numerous books on goaltending as well as a pictorial history of Harvard University athletics. In the mid-1980's, Bertagna also edited two editions of Not The Boston Globe, a successful parody of the daily newspaper sold throughout New England.

Bertagna is best known for his administrative work in college hockey. After spending 15 years as the primary ice hockey administrator the ECAC, Bertagna became Hockey East's fourth commissioner on July 1, 1997. A native of Arlington, Massachusetts, Bertagna began working at the ECAC in 1982, when he was named Tournament Director. He was later named Executive Director of Ice Hockey before he was appointed Ice Hockey Commissioner in 1991.

Bertagna made his mark immediately at Hockey East, engineering a multi-year television deal (SportsChannel New England) in his first month on the job. Shortly thereafter, league tournament attendance rocketed upward, leading to the event's first-ever sellout in 2000. Bertagna was instrumental in bringing about the formation of the Women's Hockey East Association, just as he initiated league play for both Division I and Division III women's programs while with the ECAC. In 2013, the directors recognized his contributions to the women's game by dubbing the Women's Hockey East championship trophy the Bertagna Trophy.

Hockey East has enjoyed unparalleled success on the ice during Bertagna's tenure, winning seven men's national championships, including 2015

champion Providence College and five of the last eight, and regularly enjoying post-season accolades for many of its student-athletes. Seven of the last 15 players recognized as "Hobey Hat Trick" honorees have come from Hockey East schools, including last year's winner, Boston University's Jack Eichel.

Media coverage has soared under Bertagna's direction, as evidenced most recently by his engineering national deals with the American Sports Network for regular season coverage and with the NBC Sports Network for the championship weekend. Alongside these deals, Bertagna has maintained a strong relationship with the New England Sports Network (NESN) for regional coverage of both regular-season and post-season games.

Bertagna has also delivered a number of high profile special events for Hockey East member schools. During the 2015-16 season, UMass Lowell and Northeastern University will play in the Friendship Four Tournament over Thanksgiving weekend in Belfast, Northern Ireland, along with Brown University and Colgate University. One of two Notre Dame at UConn

the growth of AHCA membership from fewer than 300 members in 1992 to more than 1,400 members today. He has served two separate stints on the NCAA Ice Hockey Rules Committee, chairing the committee is first time through and currently back as a committee member this year. He also serves on the Board of Directors of both USA Hockey and the Hockey Humanitarian Award Foundation.

Another major contribution on the national stage has come in his continuing role with the Hockey Commissioners Association (HCA). The commissioners of the six NCAA Division I men's ice hockey conferences have launched a number of initiatives that have helped grow the game at the national and international levels. In recent years, Bertagna was instrumental in securing funds for the formation of College Hockey, Inc., the marketing arm of the HCA.

Beyond his college hockey accomplishments, Bertagna has forged an international reputation as a student and coach of goaltending. No one in North America is respected more for his contributions to the study of the position. Last year, he celebrated his 42nd year as a goalie coach, having operated his own clinics for thousands of goalies of all ages throughout New England since 1974. He continues to speak on the subject for USA Hockey throughout the United States. Through his camps, lectures, print materials and DVDs, he has influenced the teaching of young goaltenders more than any other goaltending coach in the United States. His seventh DVD, "Goaltending Today: Traditional Values through New Techniques," was released by Championship Productions of Ames, Iowa, in 2011.

He began his professional coaching career in 1985 with the Boston Bruins, remaining with the club as the goaltender coach until 1991 and rejoining the team for the 1994-95 season. He also part of the coaching staffs of the U.S. Men's National Team at the 1991 Canada Cup, the U.S. Olympic Men's Ice Hockey Team at the 1994 Winter Olympics, and with the Milwaukee Admirals from 1994-96.

Bertagna enjoyed a brief college coaching career at Harvard University in the late 1970s, serving as Men's Junior Varsity Coach in 1976-77 and launching Harvard's women's ice hockey program in 1977-78. He served as head coach of Harvard Women's Hockey for two seasons.

As a player, Bertagna began at Arlington (Mass.) High School, before going on to Harvard University. During his early career, he played for and learned from four Hall of Fame coaches: Ed Burns at Arlington, and Ralph "Cooney" Weiland, Bill Cleary and Tim Taylor at Harvard. A two-year starter at Harvard (1971-72 and 1972-73), Bertagna led the Ivy League with a 2.45 GAA in 1972. After Harvard, he played professionally for the Milwaukee Admirals and in Cortina, Italy. He helped lead his S.G. Cortina d'Ampezzo squad to the 1975 Italian Championship.

Bertagna and his wife Kathy, a two-sport athlete at Bates College, reside in Gloucester with their three children, Bobby (19), Joey (17) and Grace (14).



Bertagna was on hand to announce the Belfast Friendship Four in April 2015, bringing college hockey overseas in 2015-16.

games scheduled for the upcoming season will be moved from Hartford to the Barclays Center in Brooklyn on November 1.

In January of 2010, Bertagna and his staff administered the first outdoor college hockey game in the east when Boston's fabled Fenway Park played host to a Hockey East doubleheader. The event, which sold out on the first day of public sale in September 2009, was an unprecedented success for the conference, both financially and in terms of exposure. In January 2012, Bertagna negotiated another contract with the Red Sox, creating a doubleheader for January 2012 featuring the league's four Division I state universities: Maine, Massachusetts, New Hampshire and Vermont. As in 2010, the event sold out, leading to the addition of third contest, BC vs. Northeastern. For the 2014 iteration, Bertagna negotiated for the inclusion of eight of Hockey East's 11 men's teams, including newcomer Notre Dame. The two doubleheaders attracted more than 57,000 fans to Fenway Park.

Nationally, Bertagna has been the Executive Director of the American Hockey Coaches Association since 1991, the only person to serve in that capacity. In this role, he has overseen



HOCKEY EAST STAFF



Kathy Wynters - Associate Commissioner



Kathy Wynters is entering her 10th season as Associate Commissioner, 21st year overall with the conference. As Joe Bertagna's chief assistant, her primary responsibilities include the day-to-day operations of both the men's and women's leagues, along with the administration of the two championship tournaments, and special events like Frozen Fenway. She served as Tournament Manager of the 2015 Frozen Four, and oversees both the Hockey East licensing and sponsorship programs. Prior to her promotion, Wynters served Hockey East as Director of Marketing and Special Events from 2001-06.

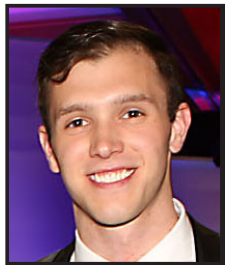
Wynters was the driving force behind the creation of the "Road to the TD Garden" Tour, "Skating Strides Against Breast Cancer" and the Hockey East Kids' Club. After nine seasons, the Skating Strides program has raised nearly \$300,000 for grass roots breast cancer initiatives, while at the same time increased attendance at women's hockey games and gave the student-athletes the opportunity to give back to the communities in which they study and play hockey.

A native of Quincy, MA, the former Kathy Walsh earned a B.S. degree in marketing from Providence College in 1982. She began her career while an undergraduate, as a three-year intern with the men's hockey team. Following graduation, she served the Friars in two capacities; first as Assistant Sports Information Director (primary men's hockey contact) and then as Assistant Athletic Director, Athletic Marketing. While at PC, and before Hockey East had a full-time staff, Wynters worked with former PC athletic director, and then Commissioner, Lou Lamoriello on the launch of the conference in 1983, and then coordinated the first three Hockey East championship tournaments (1985-87). She also served as Tournament Director for the 1986 NCAA Men's Frozen Four at the Providence Civic Center, co-hosted by Brown and Providence College.

In 1988, Wynters left her position at PC and moved over to Hockey East on a full-time basis, where she served the conference as Assistant Commissioner during the late 80's and early 90's, before going on to work for the New Jersey Devils in the NHL, spending three years as a Marketing Director, coordinating licensing and souvenir merchandising. Among her earlier accomplishments at Hockey East, Wynters worked with Joe Bertagna in coordinating the first and only "Hockeyfest" events, combining the ECAC and Hockey East championships into single weekend events from 1989-91.

Kathy and her husband Chuck (a retired on-ice official for Hockey East), reside in Waltham, MA. They are the parents of two recent college graduates: daughter Annie (23), is a high school history/special education teacher, and son C.J. (22), is a certified athletic trainer (ATC).

Brian Smith - Director of Communications



Brian Smith is entering his second season as Director of Communications with the Hockey East Association. In this role, he is responsible for all marketing and public and media relations efforts from the league office.

Prior to joining the conference in July 2014, Smith spent two years with USA Hockey as the Brian Fishman Intern. Dividing his time with USA Hockey between the national office in Colorado Springs, Colorado, and the National Team Development Program in Ann Arbor, Michigan, Smith traveled extensively while assisting at numerous international tournaments with the U.S. National Teams. While with the NTDP, Smith served as the main media contact and managed both the U.S. National Under-18 and Under-17 Teams. Additionally, Smith played an integral role in the execution of the 2012 and 2013 U.S. Hockey Hall of Fame Induction Ceremonies.

Smith has also spent time working with the Boston Bruins and New England Revolution in various roles.

A former high school hockey player at Woburn Memorial High School, Smith is a 2012 graduate of Boston College where he earned four varsity letters while competing as a member of the men's track and field team within the Atlantic Coast Conference. Smith resides in Brighton, Massachusetts.

Dave Lezenski - Supervisor of Officials



Dave Lezenski was named the Supervisor of Officials for the Women's Hockey East Association in the Fall of 2009, after previously serving for four years as assistant.

Lezenski's full-time profession is Director of Athletics, Physical Education and Health in Billerica Public Schools. He is actively involved with the Massachusetts Interscholastic Athletic Association. Lezenski also works for the NCAA during the men's and women's national tournaments, working with video replay and evaluation of officials.

The former NIHOA and ECAC veteran official is a native of Lynn, Mass., and currently resides in Lowell, Mass.





HOCKEY EAST STAFF

LEAGUE STAFF

DAN PARKHURST Web Site Coordinator



Parkhurst enters his 16th year of affiliation with Hockey East as the league's web site designer and coordinator.

Dan assists in the league's public relations efforts with multimedia solutions and day-to-day online efforts, including

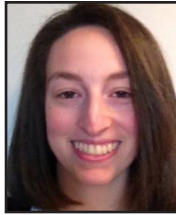
an increased video presence starting with the 2009-10 season.

In November of 1997, Parkhurst helped bring Hockey East into the digital age with the launching of HockeyEastOnline.com, the official web site of Hockey East. Since then, he has constantly sought to improve the site through innovations and multiple re-designs including the most recent overhaul in the summer of 2015.

He is a familiar radio and TV voice for the UNH men's hockey team, and also does occasional play-by-play work for the NBC and ESPN family of networks.

Parkhurst is a 1993 graduate of UNH, where he served as the Wildcats' team manager. He now resides in Conway, New Hampshire, with his wife Lynn. They have two children, Jonny (22) and Riley (16, an aspiring local musician.

SUZANNE FRIEDMAN GRADUATE INTERN



Friedman is a graduate student at Northeastern working towards a master's in Sports Leadership. While completing her degree, Friedman also assists the NWHL's Boston Pride and the New England Patriots marketing team. During the winter

of 2015, Friedman assisted the Northeastern women's program with video operations and fundraising while playing for Northeastern's women's ACHA hockey team.

Previously, Friedman served as the Tournament Services Assistant for the PGA TOUR's Constellation SENIOR PLAYERS Championship in Belmont, Massachusetts. Her main responsibilities included recruiting and leading over 550 volunteers. Friedman also served as USA Women's Hockey Operations Intern in Colorado Springs, Colorado in 2014.

Friedman earned her B.S. in Business Administration from the University of Vermont where she played ACHA hockey. As a senior, Friedman served as both captain and president. Friedman also founded LGBTQQuiet, a group for students to discuss issues of gender identity and sexuality. Friedman received the Class of 1967 Award for leadership, academic competence and character.

JUSTIN MARTINO GRADUATE INTERN



Martino is a 2015 graduate of the University of Connecticut in Storrs, Connecticut where he earned a bachelors degree in sociology with a concentration in criminal justice and a minor in history.

While at UConn, Martino worked with the men's hockey team for the past two seasons. Justin's duties with the Huskies hockey program included game day operations as well as assisting with game day statistics and video breakdown. Martino also assisted with on-ice practice set up and travel coordination while simultaneously overseeing all hockey managers.

Prior to attending the University of Connecticut, the native of Winthrop, Massachusetts graduated high school from Worcester Academy. At Worcester Academy, Martino participated in football, hockey and baseball.

Martino intends to attend law school in the near future and before going on to pursue a career in sports law.

Roster of Officials

Name	Years of Service	Name	Years of Service
Chris Aughe	3	Jessica Leclerc	5
Shane Belanger	7	Larry Legault	7
Tim Benedetto	3	Jeremy Letourneau	5
Steve Benoit	2	Benjamin Lord	3
Denny Bourgoin	6	Tim Lyons	1
Matthew Brady	2	George Major	11
John Bucko	2	Jim McKenna	12
Jesse Burns	1	John Mulroy	1
Kelly Cooke	2	Tom Nichols	5
Matt Daigle	13	Crystalle Parent	3
Tim Daley	3	Doug Place	2
Nicklaus Deblois	1	Mike Pleau	9
Dana DiFiore	2	Scott Prim	6
Andrew DiFusco	7	Thomas Quinn	3
Bill Doiron	11	David Rosoff	2
Paul Driscoll	12	Paul Sacco	8
John Dunn	2	Rick Santilli	2
Thomas Fyrer	2	Steven Saul	1
Dean Gilbert	13	Kevin Shea	3
Katie Guay	8	Mike Sheeran	3
CJ Hanafin	3	Patrick Silva	13
Bob Hawkes, Jr.	8	Wayne Silva	13
Marty Hughes	4	Bob Sloper	5
Brendan Kelleher	1	Jeremy Smith	1
Rob Kelley	4	Shawn Sullivan	3
Anthony Kenney	2	Peter Terreri	7
Tim Kerrigan	6	Robert Tisi, Jr.	9
Evan Knox	1	Bob Ward	13
Mike Komich	12	Jason Williams	2
Don Langelier	13	Mackenzie Williams	1
Chris Leavitt	6	Derek Zuckerman	6



BOSTON COLLEGE EAGLES TOP EARLY POLL



With an overwhelming eight out of nine first place votes in the preseason coaches' poll, the Boston College Eagles are picked to capture the Women's Hockey East regular season crown in 2015-16. The Eagles program is no stranger to high expectations as the team made appearance in the 2015 Beanpot Final, the 2015 Hockey East Final, and the 2015 NCAA Semifinals. After losing last year's captain, Emily Field, to the cap and gown, the Eagles look for leadership from 2015 Patty Kazmaier Memorial Award winner and senior captain, Alex Carpenter. In 2015, Boston College had a record of 34-3-2, and 2014-15 coach of the year, Katie Crowley, expects another stellar season from her team. While experienced players like Carpenter and Haley Skarupa are crucial to the Eagles success, keep an eye out for rookie defenseman Grace Bizal. Bizal has played in two IIHF Women's World Championships for the U18 USA Women's National Team. Her USA teammate and now college teammate, Katie Burt, stands between the pipes for her second season. The sophomore finished last season with an impressive .941 save percentage and etched her name in the Hockey East record books.

Under coaching leadership of Brian Durocher, the Boston University Terriers look to challenge the Eagles and capture their fifth consecutive Bertagna Trophy. It will be an adjustment year for the Terriers without the scoring punch of two-time Olympic gold medalist and 2015 Patty Kazmaier Memorial Award finalist, Marie-Philip Poulin. The Terriers will look to 2014-15 Women's Hockey East Rookie of the Year, Victoria Bach to bring energy to the BU program once again. In her first season, Bach scored 20 goals and had 14 assists in 37 games. The Terriers clinched their fourth straight Hockey East title in Hyannis, Massachusetts in March 2014.

Third in the polls for the fourth consecutive season with 50 points are the Northeastern University Huskies. The Huskies' return stand out Olympic silver medalist Kendall Coyne. The offensively gifted Coyne led the Huskies with an average of 1.68 points per game in 2014-15. Returning to historic Matthews Arena this season alongside Coyne are dependable junior defenseman, Heather Mottau, and high scoring sophomore, Denisa Křížová. These aim to replace the productivity

of Colleen Murphy, Chelsiea Goll, Chelsey Goldberg, and goaltender, Chloe Desjardins. The new netmidner joining the Huskies is Loomis Chaffee's Brittany Bugalski. Bugalski played for the U18 USA Women's National Team and will be a strong presence in net for the Huskies over the next four years.

The fourth through seventh place teams in the 2015-16 poll are only separated by five points in the University of Maine Black Bears (34), the University of Connecticut Huskies (32), the University of New Hampshire Wildcats (30), and the University of Vermont Catamounts (29). The Black Bears have an experienced and familiar team, returning 19 rostered players. UConn will take a different approach, as the team welcomes six newcomers. The Huskies new blood will replenish the roster after graduating the team's top three scorers, Sarah MacDonnell, Emily Snodgrass, and Kayla Campero. Head coach Hilary Witt enters her second season at UNH and looks to return the team to the WHEA finals with seven incoming freshmen. Two of those freshmen, Taylor Wenczkowski and Jenna Rheault, are New Hampshire natives. Further north, Catamount coach Jim Plumer is without star Amanda Pelkey who graduated this past May, but three of the five top scorers return for the Catamounts' 2015-16 season. In descending order, these players include

senior forward, Dayna Colang, sophomore defensemen, Amanda Drobot, and junior forward, Bridget Baker. Junior Goaltender Madison Litchfield will start for UVM for her second consecutive season.

The final two teams in the poll are the Providence College Friars and the Merrimack Warriors. Head coach of the Friars, Bob Deraney, returns for his 17th season. Seven incoming freshmen join the Friars and will look to learn from experienced Deraney in hopes of improving upon the team's 6-25-4 record from the 2014-2015 season. The Merrimack Warriors enter their first season in Women's Hockey East, skating at the Division I level for their inaugural year. The Warriors are led by Head coach Erin Hamlen, who will be assisted by Kacey Bellamy, a member of USA Hockey's Women's National Team, and Brent Hill, also an assistant coach of the U18 Women's National Team.

- Suzanne Friedman

15-16 WHEA PRESEASON POLL		
Rk.	Team (First-Place Votes)	Pts.
1.	Boston College (8)	64
2.	Boston University (1)	57
3.	Northeastern	50
4.	Maine	34
5.	UConn	32
6.	New Hampshire	30
7.	Vermont	29
8.	Providence	20
9.	Merrimack	8

2016 WOMEN'S HOCKEY EAST CHAMPIONSHIP TOURNAMENT

The regular season standings will determine the seedings for the 2015 Women's Hockey East Championship Tournament. The four high seeds will host a quarterfinal round game on the weekend of February 26. The top eight teams will advance to the postseason, while the team that finishes in ninth place will not move on to the playoffs.

The four quarterfinal winners will then be reseeded for the semifinal round on Saturday, March 5. The semifinal winners advance to the 14th annual Hockey East Championship Game on Sunday, March 6. For the first time ever, the Women's Hockey East Championship Tournament semifinals and title game will be hosted by Merrimack College at the recently renovated Lawler Rink in the Warriors' first season in WHEA.



Merrimack College will play host to the 14th annual WHEA Championship on March 5-6. The 2015-16 season marks the first in which Merrimack will field a women's program.





2016 WHEA Skating Strides Program

Entering its 10th season of existence, the Hockey East Skating Strides program has raised nearly \$300,000 toward the fight against breast cancer, including a single-season record of \$45,215 in 2012. At the same time, the program has earned interest conferencewide with an increased attendance at and awareness of the women's hockey programs of each of the nine member institutions. In recent years, the program has grown to include all 12 men's programs as well, with many teams hosting Skating Strides weekends. Promotions have included specialty jerseys and uniforms and have even featured entire ice sheets dyed pink in support of the program.

Skating Strides has also given the student-athletes the opportunity to give back to the communities in which they study and play hockey. Through the efforts of the Hockey East association and its member schools, charitable donations have been made by Skating Strides to several New England organizations, including the Patrick Dempsey Center for Cancer Hope & Healing in Lewiston, Maine; the Gloria Gemma Foundation in Providence, Rhode Island; the Vermont Cancer Center in Burlington, Vermont, and two Massachusetts organizations: the Friends of Mel Foundation and the Ellie Fund.

All 12 member schools, both men's and women's programs, will again participate in the 2015-16 Skating Strides campaign. With special nights coming to each campus this season, fans will have an opportunity to see their favorite team play for Hockey East supremacy while also contributing to a cause greater than itself. A full schedule of Skating Strides game nights can be found at HockeyEastOnline.com.

For more information, please contact Kathy Wynters at 781-245-2122, via email at kwynters@hockeyeastonline.com, or visit www.HockeyEastOnline.com, click on the women's league logo, and look for the Skating Strides icon!



The 2014-15 incarnation of Skating Strides saw record participation by each men's and women's program and helped to raise over \$33,000 for breast cancer research.



Emily Pfalzer



**Season
History**



TOURNAMENT QUICK REFERENCE

Year	Championship Game	Most Valuable Player
2003	Providence 1, New Hampshire 0	Kelli Halcisak, PC (Jr., D)
2004	Providence 3, New Hampshire 0	Kelli Halcisak, PC (Sr., D)
2005	Providence 3, Connecticut 1	Rush Zimmerman, PC (Sr., F)
2006	New Hampshire 6, Boston College 0	Sam Faber, UNH (Fr., F)
2007	New Hampshire 3, Providence 1	Jana Bugden, PC (Sr., G)
2008	New Hampshire 1, Providence 0	Sam Faber, UNH (Jr., F)
2009	New Hampshire 2, Boston College 1	Kacey Bellamy, UNH (Sr., D)
2010	Boston University 2, Connecticut 1 (OT)	Melissa Haber, BU (Sr., G)
2011	Boston College 3, Northeastern 2	Kelli Stack, BC (Sr., F)
2012	Boston University 2, Providence 1 (2OT)	Jenn Wakefield, BU (Sr., F)
2013	Boston University 5, Northeastern 2	Kerrin Sperry, BU (Jr., G)
2014	Boston University 3, Boston College 2	Kerrin Sperry, BU (Sr., G)
2015	Boston University 4, Boston College 1	Marie-Philip Poulin, BU (Sr., F)

COACHING RECORDS

Coach	Record	Titles
Brian Durocher BU *	17-3	5
Brian McCloskey, UNH	10-6	4
Bob Deraney, PC *	13-11	3
Katie King Crowley, BC *	9-6	1
Dave Flint, NU *	7-6	0
Heather Linstad, UConn	3-8	0
Chris MacKenzie, UConn *	2-2	0
Hilary Witt, UNH *	1-2	0
Tom Mutch, BC	1-3	0
Jim Plumer, UVM *	1-4	0
Rich Reichenbach, Maine*	0-3	0
Maria Lewis, Maine	0-3	0
Rick Filighera, Maine	0-2	0
Guy Perron, Maine	0-1	0
Jamie Wood, UNH	0-1	0
Joy Woog, NU	0-1	0

*active

Team	App.	Rec.	Titles	Last Title	2nd	Semis	MVP	ATT
Boston College	10	10-9	1	2011	4	9	1	8
Boston University	8	17-3	5	2015	0	8	5	14
Connecticut	10	5-10	0	N/A	2	6	0	6
Maine	8	0-8	0	N/A	0	3	0	0
New Hampshire	12	11-9	4	2009	2	7	3	22
Northeastern	8	7-6	0	N/A	2	6	0	3
Providence	13	13-11	3	2005	3	11	4	19
Vermont	3	1-4	0	N/A	0	1	0	0



**BOSTON UNIVERSITY TERRIERS
FIVE-TIME HOCKEY EAST CHAMPS**



ALL-TIME TOURNAMENT RESULTS



Season	Quarterfinals	Semifinals	Final	MVP
2003	--	No. 2 UNH def. No. 3 Maine (2-0) No. 1 PC def. No. 4 UConn (7-0)	No. 1 PC def. No. 2 UNH (1-0)	Kelli Halcisak, PC (Jr., D)
2004	--	No. 1 UNH def. No. 4 NU (5-0) No. 2 PC def. No. 3 Maine (4-0)	No. 2 PC def. No. 1 UNH (3-0)	Kelli Halcisak, PC (Sr., D)
2005	--	No. 1 PC def. No. 4 BC (9-1) No. 3 UConn def. No. 2 UNH (5-4 OT)	No. 1 PC def. No. 3 UConn (3-1)	Rush Zimmerman, PC (Sr., F)
2006	--	No. 1 UNH def. No. 4 ME (6-0) No. 2 BC def. No. 3 PC (3-1)	No. 1 UNH def. No. 2 BC (6-0)	Sam Faber, UNH (Fr., F)
2007	--	No. 1 UNH def. No. 4 UConn (2-0) No. 3 PC def. No. 2 BC (3-2)	No. 1 UNH def. No. 3 PC (3-1)	Jana Bugden, PC (Sr., G)
2008	--	No. 1 UNH def. No. 4 BU (8-0) No. 3 PC def. No. 2 UConn (5-1)	No. 1 UNH def. No. 3 PC (1-0)	Sam Faber, UNH (Jr., F)
2009	No. 4 PC def. No. 5 UConn (3-0) No. 3 BU def. No. 6 NU (2-1)	No. 1 UNH def. No. 4 PC (3-1) No. 2 BC def. No. 3 BU (3-2)	No. 1 BU def. No. 2 BC (2-1)	Kacey Bellamy, UNH (Sr., D)
2010	No. 3 BU def. No. 6 BC (3-1) No. 5 UConn def. No. 4 NU (4-1)	No. 3 BU def. No. 2 UNH (2-0) No. 5 UConn def. No. 1 PC (3-2)	No. 3 BU def. No. 5 UConn (2-1 OT)	Melissa Haber, BU (Sr., G)
2011	No. 5 NU def. No. 4 UConn (4-0) No. 3 PC def. No. 6 ME (5-2)	No. 5 NU def. No. 1 BU (4-2) No. 2 BC def. No. 5 NU (3-1)	No. 2 BC def. No. 5 NU (3-1)	Kelli Stack, BC (Sr., F)
2012	No. 4 PC def. No. 5 ME (6-0) No. 3 BU def. No. 6 UNH (9-1)	No. 4 PC def. No. 1 NU (2-0) No. 3 BU def. No. 2 BC (5-2)	No. 3 BU def. No. 4 PC (2-1 2OT)	Jenn Wakefield, BU (Sr., F)
2013	No. 1 BU def. No. 8 UConn (5-1) No. 2 BC def. No. 7 ME (2--1 OT) No. 3 NU def. No. 6 UVM (5-1) No. 5 PC def. No. 4 UNH (5-4 OT)	No. 1 BU def. No. 5 PC (4-0) No. 3 NU def. No. 2 BC (4-1)	No. 1 BU def. No. 3 NU (5-2)	Kerrin Sperry, BU (Jr., G)
2014	No. 1 BC def. No. 8 UNH (8-1) No. 2 BU def. No. 7 PC (3-2) No. 3 NU def. No. 6 UConn (2-1) No. 4 UVM def. No. 5 ME (3-2 3OT)	No. 1 BC def. No. 4 UVM (3-1) No. 2 BU def. No. 3 NU (3-2)	No. 2 BU def. No. 1 BU (3-2)	Kerrin Sperry, BU (Sr., G)
2015	No. 1 BC def. No. 8 PC (6-2, 8-0) No. 2 BU def. No. 7 UVM (8-1, 7-2) No. 3 NU def. No. 6 UNH (1-2, 3-2, 4-2) No. 5 UConn def. No. 4 ME (3-2, 1-0 OT)	No. 1 BC def. No. 4 UConn (3-1) No. 2 BU def. No. 3 NU (6-1)	No. 2 BU def. No. 1 BC (4-1)	Marie-Philip Poulin, BU (Sr., F)





ALL-TIME NCAA RESULTS

NCAA TOURNAMENT

Season	Quarterfinals	Semifinals	Championship
2003	N/A	--	--
2004	N/A	--	--
2005	Minnesota def. PC (6-1)	--	--
2006	UNH def. Harvard (3-1)	Minnesota def. UNH (5-4)	--
2007	St. Lawrence def. UNH (6-2) BC def. Dartmouth (3-2 2OT)	UMD def. BC (4-3 2OT)	--
2008	UNH def. St. Lawrence (3-2 OT)	UMD def. UNH (3-2)	--
2009	UMD def. UNH 4-1 Minnesota def. BC (4-3)	--	--
2010	Mercyhurst def. BU (4-1) UMD def. UNH (2-1)	--	--
2011	BC def. Minnesota (4-1) BU def. Mercyhurst (4-2)	Wisconsin def. BC (3-2) BU def. Cornell (4-1)	Wisconsin def. BU (4-1)
2012	BC def. St. Lawrence (6-3) Cornell def. BU (8-7 3OT)	Wisconsin def. BC (6-2) --	--
2013	BC def. Harvard (3-1) BU def. Clarkson (5-3)	Minnesota def. BC (3-2 OT) BU def. Mercyhurst (4-1)	Minnesota def. BU (6-3)
2014	Minnesota def. BU (5-1) Clarkson def. BC (3-1)	-- --	--
2015	BC def. Clarkson (5-1) Wisconsin def. BU (5-1)	Harvard def. BC (2-1)	--



2002-03 SEASON SNAPSHOT



2002-03 SEASON

Regular Season Champion
PROVIDENCE

Tournament Champion
PROVIDENCE

Player of the Year
JEN HUGGON, UNH

Coach of the Year: Brian McCloskey, New Hampshire
Rookie of the Year: Lindsay Hansen, New Hampshire
Three Stars Award: Jen Huggon, New Hampshire
Sportsmanship Award: Darlene Stephenson, Providence



Standings	GP	W	L	T	Pts	GF	GPG	GA	GAPG	PP Pct.	PK Pct.	Overall
1. Providence	15	13	1	1	27	56	3.73 (1)	22	1.47 (2)	26.9 (1)	89.9 (1)	24-6-6
2. New Hampshire	15	13	2	0	26	55	3.67 (2)	15	1.00 (1)	15.5 (3)	89.6 (2)	27-7-2
3. Maine	15	5	8	2	12	27	1.80 (3)	31	2.07 (3)	7.1 (5)	85.5 (4)	12-15-4
4. UConn	15	3	9	3	9	17	1.13 (6)	37	2.47 (5)	16.7 (2)	88.1 (3)	11-20-4
Northeastern	15	4	10	1	9	24	1.60 (4)	36	2.40 (4)	4.8 (6)	79.0 (5)	9-18-4
6. Boston College	15	2	10	3	7	23	1.53 (5)	61	4.07 (6)	11.3 (4)	76.2 (6)	12-17-3

HOCKEY EAST LEADERS

Points

1. Kelli Halcisak - PC	21
2. Stephanie Jones - UNH	17
Ashley Payton - PC	17
4. Jenn Butsch - PC	16
Allison Edgar - UNH	16

Goals Against Average

1. Jen Huggon - UNH	0.89
2. Jana Bugden - PC	1.45
3. Lara Smart - Maine	2.06
4. Chanda Gunn - NU	2.38
5. Shannon Murphy - UConn	2.76

Goals

1. Stephanie Jones - UNH	10
2. Darlene Stephenson - PC	9
Rush Zimmerman - PC	9
4. Ashley Payton - PC	8
5. Vicki Davis - UNH	7
Karen Droog - Maine	7
Kim Greene - NU	7

Save Percentage

1. Jen Huggon - UNH	.953
2. Jana Bugden - PC	.926
3. Lara Smart - Maine	.922
4. Chanda Gunn - NU	.921
5. Shannon Murphy - UConn	.900

Points (Team Leaders)

Kelli Halcisak - PC	21
Stephanie Jones - UNH	17
Meagan Aarts - Maine	10
Rebecca Paul - NU	9
Brooke White - NU	9
Alaina Clark - BC	8
Jacquelyn McGuire - UConn	6

Assists

1. Kelli Halcisak - PC	15
2. Allison Edgar - UNH	11
3. Jenn Butsch - PC	10
Lindsay Hansen - UNH	10
Chandy Kaip - UNH	10
Randi MacMaster - UNH	10

HOCKEY EAST ALL-STARS

*All-Americans

First Team	Position	Second Team
Jen Huggon - UNH *	G	Chanda Gunn - NU
Kelli Halcisak - PC *	D	Allison Edgar - UNH
Kristen Thomas - UNH	D	Gen Richardson - BC
	D	Meredith Roth - PC
Jenn Butsch - PC	F	Karen Droog - Maine
Stephanie Jones - UNH	F	Darlene Stephenson - PC
Ashley Payton - PC	F	Rush Zimmerman - PC

ITECH ALL-ROOKIE TEAM

G: Jana Bugden, Providence
G: Kaitlyn Shain, UConn
D: Theresa Ella, Northeastern
D: Jill McInnis, Boston College
F: Vicki Davis, New Hampshire
F: Lindsay Hansen, New Hampshire
F: Rebecca Paul, Northeastern

WHEA ALL-TOURNAMENT TEAM

G: Jen Huggon - UNH
D: Allison Edgar - UNH
D: Kelli Halcisak - PC
F: Hilary Greaves - PC
F: Stephanie Jones - UNH
F: Rush Zimmerman - PC





2003-04 SEASON SNAPSHOT

2003-04 SEASON

Regular Season Champion

NEW HAMPSHIRE

Tournament Champion

PROVIDENCE

Players of the Year

CAROLYN GORDON, UNH

CHANDA GUNN, NU

Coach of the Year: Joy Woog, Northeastern

Rookie of the Year: Sonny Watrous, Providence

Three Stars Award: Chanda Gunn, Northeastern

Sportsmanship Award: Karen Thatcher, Providence



Standings	GP	W	L	T	Pts	GF	GPG	GA	GAPG	PP Pct.	PK Pct.	Overall
1. New Hampshire	20	17	1	2	36	88	4.40 (1)	35	1.75 (1)	23.2 (2)	90.9 (1)	23-9-4
2. Providence	20	14	5	1	29	79	3.95 (2)	37	1.85 (2)	26.3 (1)	86.4 (2)	21-13-2
3. Maine	20	9	9	2	20	43	2.15 (3)	50	2.50 (4)	12.8 (3)	85.8 (3)	12-16-4
4. Northeastern	20	7	9	4	18	35	1.75 (5)	49	2.45 (3)	6.2 (6)	85.6 (4)	13-13-8
5. UConn	20	5	11	4	14	38	1.90 (4)	62	3.10 (5)	12.1 (4)	75.9 (6)	9-19-6
6. Boston College	20	1	18	1	3	29	1.45 (6)	79	3.95 (6)	11.5 (5)	80.2 (5)	6-22-3

HOCKEY EAST LEADERS

Points

1. Lindsay Hansen - UNH	31
2. Rebecca Paul - UNH	30
3. Rush Zimmerman - PC	29
4. Carolyn Gordon - UNH	28
Kelli Halcisak - PC	28

Goals

1. Carolyn Gordon - UNH	20
2. Sonny Watrous - PC	14
3. Rush Zimmerman - PC	13
4. Rebecca Paul - UNH	12
5. Kelli Halcisak - PC	10

Assists

1. Lindsay Hansen - UNH	23
2. Darlene Stephenson - PC	22
3. Kristen Thomas - UNH	19
4. Kelli Halcisak - PC	18
Rebecca Paul - UNH	18

GAA

1. Melissa Bourdon - UNH	1.80
2. Jana Bugden - PC	1.92
3. Chanda Gunn - NU	2.01
4. Lara Smart - Maine	2.33
5. Kaitlyn Shain - UConn	2.82

Save Percentage

1. Chanda Gunn - NU	.937
2. Lara Smart - Maine	.924
3. Jana Bugden - PC	.916
4. Melissa Bourdon - UNH	.913
5. Kaitlyn Shain - UConn	.910

Points (Team Leaders)

Lindsay Hansen - UNH	31
Rush Zimmerman - PC	29
Tristan Desmet - Maine	18
Cyndy Kenyon - NU	14
Tiffany Owens - UConn	13
Sarah Courtney - BC	9

HOCKEY EAST ALL-STARS

(*All-Americans)

First Team	Position	Second Team
Chanda Gunn - NU *	G	Lara Smart - Maine
Allison Edgar - UNH	D	Theresa Ella - NU
Kristen Thomas - UNH	D	* Kelli Halcisak - PC
	F	Tristan Desmet - Maine
Carolyn Gordon - UNH	F	Amy Goodney - NU
Lindsay Hansen - UNH	F	Darlene Stephenson - PC
Meagan Aarts - Maine	F	Rush Zimmerman - PC

ITECH ALL-ROOKIE TEAM

G: Melissa Bourdon, New Hampshire
 D: Martine Garland, New Hampshire
 D: Natalie Vibert, UConn
 F: Sonia Corriveau, Maine
 F: Amy Goodney, Northeastern
 F: Nicole Hekle, New Hampshire
 F: Sonny Watrous, Providence

WHEA ALL-TOURNAMENT TEAM

G: Jana Bugden, PC
 D: Allison Edgar, UNH
 D: Kelli Halcisak, PC
 F: Nicole Hekle, UNH
 F: Karen Thatcher, PC
 F: Sonny Watrous, PC



2004-05 SEASON SNAPSHOT



2004-05 SEASON

Regular Season Champions

NEW HAMPSHIRE and PROVIDENCE

Tournament Champion

PROVIDENCE

Players of the Year

STEPHANIE JONES, UNH

KAREN THATCHER, PC

Coaches of the Year: Brian McCloskey, UNH and Tom Mutch, BC

Rookie of the Year: Jaclyn Hawkins, UConn

Three Stars Award: Rush Zimmerman, Providence

Sportsmanship Award: Karen Thatcher, Providence



Standings	GP	W	L	T	Pts	GF	GPG	GA	GAPG	PP Pct.	PK Pct.	Overall
1. Providence	20	14	4	2	30	65	3.25 (2)	48	2.40 (3)	19.8 (2)	83.3 (3)	19-10-5
New Hampshire	20	13	3	4	30	76	3.80 (1)	33	1.65 (1)	19.0 (3)	88.3 (1)	21-7-6
3. UConn	20	11	5	4	26	55	2.75 (3)	43	2.15 (2)	17.1 (4)	86.2 (2)	15-11-8
4. Boston College	20	6	11	3	15	46	2.30 (4)	67	3.35 (5)	20.0 (1)	81.3 (5)	10-19-4
5. Maine	20	5	13	2	12	39	1.95 (5)	57	2.85 (5)	10.7 (6)	81.7 (4)	14-15-3
6. Northeastern	20	2	15	3	7	38	1.90 (6)	71	3.55 (6)	13.4 (5)	80.7 (6)	3-25-4

HOCKEY EAST LEADERS

Points

1. Nicole Hekle - UNH	33
2. Karen Thatcher - PC	32
3. Rush Zimmerman - PC	30
4. Lindsay Hansen - UNH	26
Stephanie Jones - UNH	26

GAA

1. Melissa Bourdon - UNH	1.85
2. Kaitlyn Shain - UConn	1.91
3. Amy Thomas - PC	2.34
4. Alison Quandt - BC	2.72
5. Rachel Gettings - ME	2.79

Goals

1. Jaclyn Hawkins - UConn	18
2. Rush Zimmerman - PC	16
3. Stephanie Jones - UNH	14
4. Nicole Hekle - UNH	13
Deborah Spillane - BC	13
Karen Thatcher - PC	13

Save Percentage

1. Kaitlyn Shain - UConn	.935
2. Marisa Hourihan - NU	.921
3. Melissa Bourdon - UNH	.915
4. Amy Thomas - PC	.902
5. Alison Quandt - BC	.901

Assists

1. Nicole Hekle - UNH	20
2. Karen Thatcher - PC	19
3. Lindsay Hansen - UNH	18
4. Leah Craig - UNH	14
Rush Zimmerman - PC	14

Points (Team Leaders)

Nicole Hekle - UNH	33
Karen Thatcher - PC	32
Jaclyn Hawkins - UConn	24
Deb Spillane - BC	20
Tristan Desmet - Maine	19
Amy Goodney - NU	13

HOCKEY EAST ALL-STARS

First Team

Melissa Bourdon - UNH
Sarah Carlson - BC
Natalie Vibert - UConn
Nicole Hekle - UNH
Stephanie Jones - UNH
Karen Thatcher - PC
Rush Zimmerman - PC

Position

G
D
D
F/D
F
F
F

Second Team

Kaitlyn Shain - UConn
Lori DiGiacomo - NU
Kelly Law - Maine
Kathleen Smith - PC
Tristan Desmet - Maine
Jaclyn Hawkins - UConn
Deborah Spillane - BC

ITECH ALL-ROOKIE TEAM

D: Kathleen Smith, Providence
F: Leah Craig, New Hampshire
F: Jaclyn Hawkins, UConn
F: Nikki Petrich, Northeastern
F: Deborah Spillane, Boston College

NCAA TOURNAMENT

Quarterfinals

Minnesota def. PC (6-1)

WHEA ALL-TOURNAMENT TEAM

G: Amy Thomas, PC
D: Kristin Gigliotti, PC
D: Natalie Vibert, UConn
F: Tiffany Owens, UConn
F: Sonny Watrous, PC
F: Rush Zimmerman, PC





2005-06 SEASON SNAPSHOT

Regular Season Champion
NEW HAMPSHIRE

Tournament Champion
NEW HAMPSHIRE

Player of the Year
SADIE WRIGHT-WARD, UNH

Coach of the Year: Brian McCloskey, New Hampshire
Rookie of the Year: Sam Faber, New Hampshire
Three Stars Award: Jennifer Hitchcock, New Hampshire
Sportsmanship Award: Karen Thatcher, Providence



2005-06 SEASON

Standings	GP	W	L	T	Pts	GF	GPG	GA	GAPG	PP Pct.	PK Pct.	Overall
1. New Hampshire	21	19	1	1	39	107	5.10 (1)	23	1.10 (1)	32.7 (1)	91.5 (1)	33-3-1
2. Boston College	21	16	4	1	33	62	2.95 (3)	43	2.05 (2)	13.9 (4)	86.2 (4)	20-11-4
3. Providence	21	11	8	2	24	69	3.29 (2)	50	2.38 (5)	22.2 (2)	83.0 (6)	17-14-4
4. Maine	21	9	8	4	22	58	2.76 (4)	48	2.29 (4)	18.0 (3)	84.7 (5)	17-9-6
5. UConn	21	10	11	0	20	44	2.10 (5)	47	2.24 (3)	12.4 (6)	88.9 (2)	12-21-1
6. Boston University	21	6	13	2	14	36	1.71 (7)	66	3.14 (6)	12.5 (5)	86.7 (3)	12-17-4
7. Northeastern	21	6	14	1	13	43	2.05 (4)	79	3.76 (8)	4.5 (8)	77.1 (8)	8-24-1
8. Vermont	21	1	19	1	3	13	0.62 (8)	76	3.62 (7)	5.1 (7)	80.6 (7)	3-29-2

HOCKEY EAST LEADERS

Points

1. Sadie Wright-Ward - UNH	39	1. Melissa Bourdon - UNH	1.18
2. Jennifer Hitchcock - UNH	38	2. Alison Quandt - BC	1.95
3. Samantha Faber - UNH	31	Kaitlyn Shain - UConn	1.95
4. Karen Thatcher - PC	27	4. Genevieve Turgeon - ME	2.44
5. Sonny Watrous - PC	25	5. Jana Bugden - PC	2.54

Goals

1. Jennifer Hitchcock - UNH	18	1. Kaitlyn Shain - UConn	.931
Sadie Wright-Ward - UNH	18	2. Melissa Bourdon - UNH	.920
3. Samantha Faber - UNH	15	3. Allyse Wilcox - BU	.910
4. Sonny Watrous - PC	14	4. Alison Quandt - BC	.909
5. Deborah Spillane - BC	13	5. Katie Nichols - UVM	.904

Assists

1. Martine Garland - UNH	22	Points (Team Leaders)	
2. Sadie Wright-Ward - UNH	21	Sadie Wright-Ward - UNH	39
3. Jennifer Hitchcock - UNH	20	Karen Thatcher - PC	27
4. Karen Thatcher - PC	18	Deb Spillane - BC	23
5. Samantha Faber - UNH	16	Nikki Petrich - NU	20
		Jaclyn Hawkins - UConn	19
		Kelly Law - Maine	18
		Laurel Koller - BU	14
		Three players - UVM	3

HOCKEY EAST ALL-STARS

(*All-Americans)

First Team	Position	Second Team
Kaitlyn Shain - UConn	G	Melissa Bourdon - UNH
Martine Garland - UNH *	D	* Kristin Gigliotti - PC
Kelly Law - Maine	D	Maggie Taverna - BC
Jennifer Hitchcock - UNH * F		Sarah Feldman - BC
Karen Thatcher - PC * F		Deb Spillane - BC
Sadie Wright-Ward - UNH * F		Sonny Watrous - PC

ITECH ALL-ROOKIE TEAM

G: Allyse Wilcox, Boston University
 D: Erin Normore, Providence
 D: Amanda Shaw, Boston University
 D: Maggie Taverna, Boston College
 F: Samantha Faber, New Hampshire
 F: Patricia Gagnon, Maine
 F: Becky Zavisza, Boston College \$
 \$ denotes unanimous selection

NCAA TOURNAMENT

Quarterfinals

UNH def. Harvard (3-1)

Semifinals

Minnesota def. UNH (5-4)

WHEA ALL-TOURNAMENT TEAM

G: Melissa Bourdon, UNH
 D: Kacey Bellamy, UNH
 D: Martine Garland, UNH
 F: Samantha Faber, UNH
 F: Jennifer Hitchcock, UNH
 F: Sadie Wright-Ward, UNH



2006-2007 SEASON SNAPSHOT



2006-07 SEASON

Regular Season Champion
NEW HAMPSHIRE

Tournament Champion
NEW HAMPSHIRE

Player of the Year
KELLI STACK, BC

Coach of the Year: Tom Mutch, Boston College
Rookie of the Year: Kelli Stack, Boston College
Three Stars Award: Sam Faber, New Hampshire
Sportsmanship Award: Deb Spillane, Boston College



Rk.	Standings	GP	W	L	T	Pts	GF	GPG	GA	GAPG	PP Pct.	PK Pct.	Overall
1.	New Hampshire	21	18	1	2	38	93	4.43	26	1.24	20.2%	91.3%	28-4-5
2.	Boston College	21	15	6	0	30	94	4.48	38	1.81	22.7%	87.7%	24-10-2
3.	Providence	21	12	6	3	27	71	3.38	47	2.24	21.6%	87.9%	16-16-4
4.	UConn	21	12	7	2	26	59	2.81	47	2.24	17.9%	86.4%	17-15-3
5.	Boston University	21	10	9	2	22	52	2.48	51	2.43	13.0%	84.7%	19-12-3
6.	Maine	21	5	14	2	12	41	1.95	71	3.38	13.8%	82.8%	10-19-2
7.	Northeastern	21	4	15	2	10	45	2.14	95	4.52	12.9%	82.7%	5-26-2
8.	Vermont	21	1	19	1	3	17	0.81	97	4.62	3.8%	69.0%	3-27-2

HOCKEY EAST LEADERS

Points	Goals Against Average
1. Kelli Stack - BC 34	1. Melissa Bourdon - UNH 1.23
2. Allie Thunstrom - BC 31	2. Molly Schaus - BC 1.87
3. Becky Zavisza - BC 29	Melissa Haber - BU 1.87
4. Sam Faber - UNH 28	4. Jana Bugden - PC 2.00
Kristin Gigliotti - PC 28	5. Brittany Wilson - UConn 2.17

Goals	Save Percentage
1. Allie Thunstrom - BC 21	1. Molly Schaus - BC .929
2. Jennifer Hitchcock - UNH 17	2. Jana Bugden - PC .925
3. Meghan Fardelmann - BC 15	3. Brittany Wilson - UConn .924
4. Chelsey Jones - NU 13	4. Melissa Haber - BU .923
Kelli Stack - BC 13	4. Melissa Bourdon - UNH .919
Jaclyn Hawkins - UConn 13	

Assists	Points (Team Leaders)
1. Sam Faber - UNH 21	1. Kelli Stack - BC 34
Kelli Stack - BC 21	2. Sam Faber - UNH 28
3. Kristin Gigliotti - PC 17	Kristin Gigliotti - PC 28
4. Sonny Watrous - PC 16	4. Jaclyn Hawkins - UConn 23
5. Sarah Feldman - PC 15	5. Chelsey Jones - NU 21
	6. Melissa Anderson - BU 16
	Erin Seaman - BU 16
	8. Sonia Corriveau - Maine 15
	9. Chelsea Furlani - UVM 5

HOCKEY EAST ALL-STARS

First Team	Position	Second Team
Brittany Wilson - UConn	G	Molly Schaus - BC
Kristin Gigliotti - PC	D	Kacey Bellamy - UNH
Martine Garland - UNH	D	Maggie Taverna - BC
Natalie Vibert - UConn	F	
Kelli Stack - BC	F	Jennifer Hitchcock - UNH
Allie Thunstrom - BC	F	Becky Zavisza - BC
Sam Faber - UNH	F	Jaclyn Hawkins - UConn

ITECH ALL-ROOKIE TEAM

G: Molly Schaus, Boston College \$
 F: Kelli Stack, Boston College \$
 F: Allie Thunstrom, Boston College \$
 F: Chelsey Jones, Northeastern \$
 F: Kelly Paton, New Hampshire
 F: Dominique Thibault, UConn
 \$ denotes unanimous selection

NCAA TOURNAMENT

Quarterfinals
 St. Lawrence def. UNH (6-2)
 BC def. Dartmouth (3-2 2OT)

Semifinals
 UMD def. BC (4-3 2OT)

WHEA ALL-TOURNAMENT TEAM

G: Jana Bugden, PC
 D: Kacey Bellamy, UNH
 D: Kristin Gigliotti, PC
 F: Sam Faber, UNH
 F: Kelly Paton, UNH
 F: Mari Pehkonen, PC





2007-2008 SEASON SNAPSHOT

2007-08 SEASON

Regular Season Champion
NEW HAMPSHIRE

Tournament Champion
NEW HAMPSHIRE

Player of the Year
DOMINIQUE THIBAUT, UCONN

Coach of the Year: Brian Durocher, Boston University
Rookie of the Year: Jenn Wakefield, New Hampshire
Three Stars Award: Leah Sulyma, Northeastern
Sportsmanship Award: Jaclyn Hawkins, UConn
Goaltending Champion: Kayley Herman, New Hampshire
Scoring Champion: Jenn Wakefield, New Hampshire



Rk.	Standings	GP	W	L	T	Pts	GF	GPG	GA	GAPG	PP Pct.	PK Pct.	Overall
1.	New Hampshire	21	20	0	1	41	99	4.71	15	0.71	32.6% (28-86)	97.8% (89-91)	33-4-1
2.	UConn	21	13	5	3	29	69	3.29	54	2.57	20.4% (20-98)	78.8% (78-99)	22-8-5
3.	Providence	21	10	8	3	23	59	2.81	51	2.43	15.9% (17-107)	83.3% (85-102)	16-16-4
	Boston University	21	11	9	1	23	47	2.24	44	2.10	16.2% (16-99)	85.7% (66-77)	15-17-3
5.	Boston College	21	9	9	3	21	53	2.52	46	2.19	15.9% (13-82)	82.9% (92-111)	14-13-7
6.	Northeastern	21	6	14	1	13	37	1.76	70	3.33	13.0% (12-92)	89.0% (73-82)	7-24-3
7.	Vermont	21	4	16	1	9	26	1.24	65	3.10	5.6% (5-90)	85.1% (80-94)	8-25-1
8.	Maine	21	3	15	3	9	35	1.67	80	3.81	7.5% (8-107)	75.2% (79-105)	4-27-3

HOCKEY EAST LEADERS

Points

1. J. Wakefield - UNH	33
2. Faber - UNH	32
3. K. Stack - BC	30
D. Thibault - UConn	30
S. Wright-Ward - UNH	30
6. J. Hitchcock - UNH	28
J. Hawkins - UConn	28
8. L. Craig - UNH	22
D. Spillane - BC	22

Goals Against Average

1. K. Herman - UNH	.944
2. A. Wilcox - BU	.933
3. M. Schaus - BC	.914
4. L. Sulyma - NU	.913
5. G. Turgeon - ME	.909
6. B. Wilson - UConn	.904
7. K. Olychuck - UVM	.903
D. Ciarletta - PC	.903

Save Percentage

1. K. Herman - UNH	0.83
2. A. Wilcox - BU	1.76
3. M. Schaus - BC	2.20
4. D. Ciarletta - PC	2.26
5. B. Wilson - UConn	2.63
6. K. Olychuck - UVM	2.79
7. L. Sulyma - NU	3.16
8. G. Turgeon - ME	3.48

Points (Team Leaders)

1. J. Wakefield - UNH	33
2. K. Stack - BC	30
D. Thibault - UConn	30
4. M. Anderson - BU	19
5. S. Feldman - PC	18
6. V. Vani - ME	16
7. K. Kehoe - NU	15
8. Three players - UVM	7

Goals

1. J. Wakefield - UNH	19
2. K. Stack - BC	18
3. J. Hitchcock - UNH	16
4. D. Thibault - UConn	15
5. Faber - UNH	13
6. J. Hawkins - UConn	11
S. Wright-Ward - UNH	11
A. Ruff - PC	11

Assists

1. S. Wright-Ward - UNH	19
Faber - UNH	19
3. J. Hawkins - UConn	17
4. D. Spillane - BC	15
D. Thibault - UConn	15
6. J. Wakefield - UNH	14
K. Paton - UNH	14
L. Craig - UNH	14

HOCKEY EAST ALL-STARS

(*All-Americans)

First Team	Position	Second Team
Allyse Wilcox - BU	G	Kayley Herman - UNH
Martine Garland - UNH *	D	Kacey Bellamy - UNH
Kathleen Smith - PC	D	Maggie Taverna - BC
Dominique Thibault - UConn *	F	Jaclyn Hawkins - UConn
Sam Faber - UNH	F	Jenn Hitchcock - UNH
Jenn Wakefield - UNH	F	Melissa Anderson - BU
	F	Kelli Stack - BC

ITECH ALL-ROOKIE TEAM

G: Leah Sulyma, Northeastern
 G: Kayley Herman, New Hampshire
 D: Jody Sydor, UConn
 F: Jennifer Chaisson, UConn
 F: Kristi Kehoe, Northeastern
 F: Alyse Ruff, Providence \$
 F: Jenn Wakefield, New Hampshire \$
 \$ denotes unanimous selection

WHEA ALL-TOURNAMENT TEAM

G: Kayley Herman, UNH
 D: Kathleen Smith, PC
 D: Maggie Joyce, UNH
 F: Sam Faber, UNH
 F: Jenn Wakefield, UNH
 F: Mari Pehkonen, PC

NCAA TOURNAMENT

Quarterfinals

UNH def. St. Lawrence (3-2 OT)

Semifinals

UMD def. UNH (3-2)



2008-09 SEASON SNAPSHOT



2008-09 SEASON

Regular Season Champion
NEW HAMPSHIRE

Tournament Champion
NEW HAMPSHIRE

Cammi Granato Player of the Year
KELLI STACK, BC

Coach of the Year: Brian McCloskey, New Hampshire
Rookie of the Year: Genevieve Lacasse, Providence
Three Stars Award: Kelli Stack, Boston College
Sportsmanship Award: Colleen Harris, Boston College
Goaltending Champion: Genevieve Lacasse, Providence
Scoring Champion: Kelli Stack, Boston College



Rk.	Standings	GP	W	LSOL	Pts	GF	GPG	GAGAPG	PP Pct.	PK Pct.	Overall	
1.	New Hampshire	21	16(1)	2	3	35	73	3.48	38	1.81 23.1% (24-104)	84.8% (89-105)	24-6-5
2.	Boston College	21	14(1)	5	2	30	68	3.24	35	1.67 17.5% (18-103)	89.9% (107-119)	22-9-5
3.	Boston University	21	14(4)	6	1	29	62	2.95	41	1.95 18.0% (22-122)	85.2% (92-108)	18-11-7
4.	Providence	21	12(1)	8	1	25	52	2.48	40	1.90 15.6% (17-109)	86.5% (96-111)	17-16-3
	Connecticut	21	12(2)	8	1	25	48	2.29	42	2.00 16.5% (17-103)	85.3% (81-95)	19-12-4
6.	Northeastern	21	7(0)	13	1	15	33	1.57	56	3.67 7.7% (8-104)	87.7% (93-106)	12-20-3
7.	Vermont	21	5(1)	15	1	11	32	1.52	70	3.33 15.0% (17-113)	80.4% (74-92)	7-25-2
8.	Maine	21	4(2)	15	2	10	33	1.57	79	3.76 11.5% (12-104)	75.4% (95-126)	5-23-5

HOCKEY EAST LEADERS

HOCKEY EAST ALL-STARS

Points

1. K. Stack - BC	36
2. J. Wakefield - UNH	30
3. K. Paton - UNH	28
4. A. Thunstrom - BC	27
S. Faber - UNH	27
6. M. Restuccia - BC	20
7. M. Long - UNH	18
M. Anderson - BU	18

GAA

1. M. Haber - BU	1.54
2. G. Lacasse - PC	1.55
3. L. Minton - UNH	1.56
4. M. Schaus - BC	1.64
5. B. Wilson - UConn	1.86
6. K. Herman - UNH	1.93
7. A. Wilcox - BU	2.06

Save Percentage

1. G. Lacasse - PC	.940
2. M. Schaus - BC	.934
3. M. Haber - BU	.929
4. F. Schelling - NU	.924
5. L. Sulyma - NU	.919
6. B. Wilson - UConn	.917
L. Minton - UNH	.917
8. A. Wilcox - BU	.913

Goals

1. J. Wakefield - UNH	21
2. K. Stack - BC	15
3. A. Thunstrom - BC	12
K. Paton - UNH	12
5. D. Thibault - UConn	10
L. Cherewyk - BU	10
S. Faber - UNH	10

Assists

1. Kelli Stack - BC	21
2. S. Faber - UNH	17
3. K. Paton - UNH	16
4. A. Thunstrom - BC	15
5. K. Bellamy - UNH	14
6. M. Restuccia - BC	13
A. Taylor - UNH	13

Points (Team Leaders)

1. K. Stack - BC	36
2. J. Wakefield - UNH	30
3. M. Anderson - BU	18
4. C. Allen - UConn	17
L. Veharanta - PC	17
6. P. Wakeham - UVM	16
7. V. Vani - ME	15
J. Gallo - ME	15
9. K. Kehoe - NU	10

First Team

Molly Schaus - BC
Kacey Bellamy - UNH
Maggie Taverna - BC
Sam Faber - UNH
Kelli Stack - BC
Jenn Wakefield - UNH

Position

G	Genevieve Lacasse - PC
D	Cristin Allen - UConn
D	Tara Watchorn - BU
F	Kelly Paton, UNH
F	Dominique Thibault - UConn
F	Allie Thunstrom - BC

Second Team

WHEA ALL-ROOKIE TEAM

G: Genevieve Lacasse, Providence
 G: Florence Schelling, Northeastern
 D: Stephanie Gavronsky, Northeastern
 D: Tara Watchorn, Boston University
 F: Erin Barley-Maloney, Vermont
 F: Jenelle Kohanchuk, Boston University
 F: Mary Restuccia, Boston College
 F: Laura Veharanta, Providence \$
 \$ denotes unanimous selection

WHEA ALL-TOURNAMENT TEAM

G: Molly Schaus, BC
 D: Kacey Bellamy, UNH
 D: Courtney Birchard, UNH
 F: Kelli Stack, BC
 F: Micaela Long, UNH
 F: Kelly Paton, UNH

NCAA TOURNAMENT

Quarterfinals

UMD def. UNH (4-1)
 Minnesota def. BC (4-3)





2009-10 SEASON SNAPSHOT

2009-10 SEASON

Regular Season Champion
PROVIDENCE

Tournament Champion
BOSTON UNIVERSITY

Cammi Granato Player of the Year
KELLY PATON, UNH

Coach of the Year: Bob Deraney, Providence College

Rookie of the Year: Kristina Lavoie, New Hampshire

Three Stars Award: Kelly Paton, New Hampshire

Sportsmanship Award: Kasey Boucher, Boston University

Goaltending Champion: Florence Schelling, NU

Scoring Champion: Micaela Long, New Hampshire

Best Defenseman: Cristin Allen, Connecticut

Gladiator Hockey Best Defensive Forward: Jennifer Chaisson, Connecticut

FLORENCE SCHELLING, NU



Rk.	Standings	GP	W	L	T	SOW	Pts	Overall	GPG (GA)	GAPG	PP Pct.	PK Pct.
1.	Providence	21	11	5	5	3	30	15-10-9	2.71 (59)	1.94 (44)	17% (17-100)	81.6% (80-178)
2.	New Hampshire	21	13	6	2	0	28	19-9-5	3.06 (65)	2.12 (41)	23.6% (21-89)	90.4% (85-94)
	Boston Univ.	21	10	6	5	3	28	17-9-12	2.65 (54)	2.18 (41)	15.2% (14-92)	86.1% (87-101)
	Northeastern	21	9	6	6	4	28	17-9-7	2.35 (45)	1.76 (34)	11.5% (10-87)	88.1% (74-84)
5.	Connecticut	21	10	5	6	1	27	21-9-7	2.29 (46)	1.59 (33)	14.0% (14-100)	87.6% (85-97)
6.	Boston College	21	7	10	4	4	22	8-17-10	1.82 (41)	2.71 (54)	12.7% (13-102)	83.0% (93-112)
7.	Vermont	21	5	15	1	0	11	10-22-1	1.18 (26)	2.24 (55)	11.2% (13-116)	83.9% (78-93)
8.	Maine	21	3	15	3	1	10	6-20-5	1.18 (24)	2.71 (58)	10.2% (11-108)	86.1% (99-115)

HOCKEY EAST LEADERS

Points

1. M. Long - UNH	34
2. K. Paton - UNH	32
3. A. Cottrell - PC	22
4. M. Anderson - BU	21
5. K. Lavoie - UNH	20
A. Thunstrom - BC	20

Wins

1. G. Lacasse - PC	11
2. A. Garcia - UConn	10
3. L. Minton - UNH	9
4. M. Haber - BU	8
5. F. Schelling - NU	7
6. K. Olychuck - UVM	6

Goals

1. K. Lavoie - UNH	14
2. A. Thunstrom - BC	13
3. M. Anderson - BU	12
K. Paton - UNH	12
5. J. O'Neill - PC	10
A. Cottrell - PC	10

GAA

1. A. Garcia - UConn	1.42
2. F. Schelling - NU	1.50
3. M. Haber - BU	1.57
4. L. Minton - UNH	1.71
5. G. Lacasse - PC	2.02
6. K. Herman - UNH	2.06

Assists

1. M. Long - UNH	27
2. K. Paton - UNH	20
3. C. Allen - UConn	14
4. R. Dziengelewski - UNH	12
A. Cottrell - PC	12

Save%

1. F. Schelling - NU	.946
2. M. Haber - BU	.940
3. A. Garcia - UConn	.935
4. B. Ott - ME	.932
5. K. Kingston - BC	.924
6. G. Lacasse - PC	.920

Points (Team Leaders)

1. M. Long - UNH	34
2. A. Cottrell - PC	22
3. M. Anderson - BU	21
4. A. Thunstrom - BC	20
5. J. Chaisson - UConn	17
6. K. Kehoe - NU	15
7. J. Ouellette - ME	9
8. E. Walsh - UVM	8

HOCKEY EAST ALL-STARS

*All-American

First Team	Position	Second Team
Florence Schelling - NU *	G	Genevieve Lacasse - PC
Cristin Allen - UConn *	D	Tara Watchorn - BU
Courtney Birchard - UNH	D	Amber Yung - PC
Ashley Cottrell - PC	F	Melissa Anderson - BU
Micaela Long - UNH	F	Jean O'Neill - PC
Kelly Paton - UNH *	F	Allie Thunstrom - BC

WHEA ALL-ROOKIE TEAM

G: Brittany Ott, Maine
 D: Blake Bolden, Boston College
 F: Brittany Esposito, Northeastern \$
 F: Jill Cardella, Boston University \$
 F: Kristina Lavoie, New Hampshire \$
 FD: Ashley Motherwell, Boston College
 \$ denotes unanimous selection

WHEA ALL-TOURNAMENT TEAM

G: Melissa Haber, BU
 D: Tara Watchorn, BU
 D: Cristin Allen, UConn
 F: Melissa Anderson, BU
 F: Michelle Binning, UConn
 F: Amy Hollstein, UConn

NCAA TOURNAMENT

Quarterfinals

Mercyhurst def. BU (4-1)
 UMD def. UNH (2-1)



2010-11 SEASON SNAPSHOT



2010-11 SEASON

Regular Season Champion
BOSTON UNIVERSITY

Tournament Champion
BOSTON COLLEGE

Cammi Granato Player of the Year
KELLI STACK, BC

Coach of the Year: Bob Deraney, Providence College
Pro Ambitions Rookie of the Year: Marie-Philip Poulin, Boston University
Three Stars Award: Kelli Stack, Boston College
Sportsmanship Award: Jean O'Neill, Providence College
Goaltending Champion: Kerrin Sperry, BU
Scoring Champion: Kelli Stack, Boston College
Best Defenseman: Catherine Ward, Boston University
Gladiator Hockey Best Defensive Forward: Holly Lorms, Boston University



Rk.	Standings	GP	W	L	T	Pts	Overall	GPG (GA)	GAPG	PP Pct.	PK Pct.
1.	Boston University	21	15	3	3	33	27-7-4	3.14 (66)	1.57 (33)	18.0% (16-89)	93.3% (83-89)
2.	Boston College	21	13	4	4	30	24-7-6	2.62 (55)	1.52 (32)	17.2% (17-99)	92.0% (92-100)
3.	Providence	21	12	8	1	25	22-12-1	2.52 (53)	2.05 (43)	12.5% (12-96)	82.6% (71-86)
4.	UConn	21	9	9	3	21	13-9-3	1.71 (36)	1.86 (39)	11.4% (8-70)	92.0% (69-75)
5.	Northeastern	21	6	10	5	17	16-13-8	2.00 (42)	2.29 (48)	5.1% (4-79)	86.2% (75-87)
6.	Maine	21	6	12	3	15	12-17-5	1.76 (37)	2.57 (54)	15.5% (17-110)	82.6% (90-109)
	New Hampshire	21	7	13	1	15	14-16-2	1.67 (35)	2.38 (50)	8.0% (6-75)	89.6% (86-96)
8.	Vermont	21	4	13	4	12	7-17-9	1.14 (24)	2.33 (49)	10.1% (11-109)	82.4% (70-85)

HOCKEY EAST LEADERS

Points		Wins	
1. K. Stack - BC	34	1. M. Schaus - BC	13
2. J. Wakefield - BU	27	2. K. Sperry - BU	12
3. M. Restuccia - BC	22	3. G. Lacasse - PC	11
4. C. Ward - BU	21	4. A. Garcia - UConn	9
5. M. Poulin - BU	19	5. B. Ott - ME	6
		6. K. Herman - UNH	5

Goals		GAA	
1. K. Stack - BC	22	1. K. Sperry - BU	1.19
2. J. Wakefield - BU	17	2. M. Schaus - BC	1.39
3. M. Poulin - BU	10	3. A. Garcia - UConn	1.79
A. Cottrell - PC	10	4. G. Lacasse - PC	1.90
5. H. Lorms - BU	9	5. F. Schelling - NU	1.96
		R. Douville - UVM	1.96

Assists		Save%	
1. C. Ward - BU	18	1. K. Sperry - BU	.945
2. M. Restuccia - BC	17	2. A. Garcia - UConn	.943
3. J. Kirchner - BU	13	3. M. Schaus - BC	.941
4. K. Stack - BU	11	4. G. Lacasse - PC	.939
C. Buie - PC	11	5. K. Herman - UNH	.934

Points (Team Leaders)	
1. K. Stack - BC	33
2. J. Wakefield - BU	27
3. K. Bacon - PC	17
4. K. Lavoie - UNH	14
D. Ward - ME	14
6. R. Llanes - NU	13
7. T. Gross - UConn	12
8. E. Wente - UVM	10

HOCKEY EAST ALL-STARS

* All-American		
First Team	Position	Second Team
Molly Schaus - BC	G	Alexandra Garcia - UConn
Catherine Ward - BU *	D	Sami Evelyn - UConn
Courtney Birchard - UNH	D	Amber Yung - PC
Kelli Stack - BC *	F	Jillian Kirchner - BU
Jenn Wakefield - BU	F	Kate Bacon - PC
Marie-Philip Poulin - BU	F	Mary Restuccia - BC

PRO AMBITIONS ALL-ROOKIE TEAM

G: Kerrin Sperry, Boston University
 G: Roxanne Douville, Vermont
 D: Meagan Mangene, Boston College
 D: Rebecca Morse, Providence
 F: Corinne Buie, Providence
 F: Katie MacSorley, Northeastern
 F: Marie-Philip Poulin, Boston University\$
 \$ denotes unanimous selection

WHEA ALL-TOURNAMENT TEAM

G: Florence Schelling, NU
 D: Julia Marty, NU
 D: Blake Bolden, BC
 F: Jenn Wakefield, BU
 F: Casey Pickett, NU
 F: Kelli Stack, BC

NCAA TOURNAMENT

Quarterfinals
 BC def. Minnesota (4-1)
 BU def. Mercyhurst (4-2)

Semifinals
 Wisconsin def. BC (3-2)
 BU def. Cornell (4-1)

Finals
 Wisconsin def. BU (4-1)



2011-12 SEASON SNAPSHOT

Regular Season Champion
NORTHEASTERN

Tournament Champion
BOSTON UNIVERSITY

Cammi Granato Player of the Year
FLORENCE SCHELLING, NORTHEASTERN

Co-Coach of the Year: Dave Flint, Northeastern and Maria Lewis, Maine
Pro Ambitions Rookie of the Year: Kendall Coyne, Northeastern
Three Stars Award: Florence Schelling, Northeastern
Sportsmanship Award: Ashley Cottrell, Providence College
Goaltending Champion: Florence Schelling, Northeastern
Scoring Champion: Jenn Wakefield, Boston University
Best Defenseman: Kasey Boucher, Boston University
Gladiator Hockey Best Defensive Forward: Casey Pickett, Northeastern
Turfer Athletic Award: Kelly Wallace, Northeastern



2011-12 SEASON

Rk.	Standings	GP	W	L	T	Pts	Overall	GPG (GA)	GAPG	PP Pct.	PK Pct.
1.	Northeastern	21	15	3	3	33	22-7-4	3.05 (64)	1.29 (27)	12.9% (11-85)	91.0% (81-89)
2.	Boston College	21	15	4	2	32	24-9-3	2.84 (60)	1.95 (37)	15.9% (14-88)	83.1% (64-77)
3.	Boston University	21	14	7	0	28	23-14-1	3.24 (68)	2.24 (47)	18.9% (20-106)	89.2% (91-102)
4.	Providence	21	11	8	2	24	16-17-4	2.90 (61)	2.05 (43)	8.7% (9-104)	86.8% (99-114)
	Maine	21	11	8	2	24	17-11-6	2.67 (56)	2.33 (49)	12.0% (13-108)	83.2% (84-101)
6.	New Hampshire	21	4	15	2	10	10-22-3	1.81 (38)	3.57 (75)	15.0% (12-80)	88.0% (73-83)
7.	UConn	21	3	15	3	9	4-23-7	1.57 (33)	2.81 (59)	14.8% (12-81)	91.9% (79-86)
8.	Vermont	21	3	16	2	8	4-22-6	1.52 (32)	3.57 (75)	7.0% (8-114)	84.2% (96-114)

HOCKEY EAST LEADERS

Points

1. J. Wakefield - BU	31
2. K. Coyne - NU	30
3. I. Menard - BU	26
4. C. Pickett - NU	25
5. B. Dougherty - ME	22
D. Ward - ME	22

Wins

1. F. Schelling - NU	15
C. Boyles - BC	15
3. K. Sperry - BU	12
4. B. Ott - ME	11
5. G. Lacasse - PC	10

GAA

1. F. Schelling - NU	1.27
2. C. Boyles - BC	1.80
3. G. Lacasse - PC	1.84
4. N. Paniccia - UConn	2.00
5. B. Ott - ME	2.19

Save%

1. F. Schelling - NU	.956
2. N. Paniccia - UConn	.942
3. G. Lacasse - PC	.934
4. C. Boyles - BC	.931
5. B. Ott - ME	.926

Saves

1. F. Schelling - NU	580
2. B. Ott - ME	579
3. R. Douville - UVM	555
4. C. Boyles - BC	501
5. G. Lacasse - PC	499

Goals

1. K. Coyne - NU	19
2. J. Wakefield - BU	14
3. I. Menard - BU	13
B. Dougherty - ME	13
5. A. Carpenter - BC	12
K. Lavoie - UNH	12

Assists

1. J. Wakefield - BU	17
2. D. Ward - ME	15
3. T. Watchorn - BU	14
C. Pickett - NU	14
5. I. Menard - BU	13
A. Gauthier - PC	13

Points (Team Leaders)

1. J. Wakefield - BU	31
2. K. Coyne - NU	30
3. B. Dougherty - ME	22
4. K. Lavoie - UNH	21
5. A. Carpenter - BC	20
6. A. Gauthier - PC	19
7. E. Snodgrass - UConn	12
8. C. Rapin - UVM	10

HOCKEY EAST ALL-STARS

*All-American

First Team	Position	Second Team
Florence Schelling - NU *	G	Genevieve Lacasse - PC
Blake Bolden - BC	D	Stephanie Gavronsky - NU
Kasey Boucher - BU	D	Tara Watchorn - BU
Alex Carpenter - BC	F	Brittany Dougherty - ME
Kendall Coyne - NU *	F	Isabel Menard - BU
Jenn Wakefield - BU *	F	Casey Pickett - NU

PRO AMBITIONS ALL-ROOKIE TEAM

D: Emily Pfalzer, Boston College \$
 F: Alex Carpenter, Boston College \$
 F: Kendall Coyne, Northeastern \$
 F: Emily Field, Boston College
 F: Amanda Pelkey, Vermont
 F: Kayla Tutino, Boston University
 \$ denotes unanimous selection

WHEA ALL-TOURNAMENT TEAM

G: Genevieve Lacasse, PC
 D: Christie Jensen, PC
 D: Kathryn Miller, BU
 F: Ashley Cottrell, PC
 F: Marie-Philip Poáulin, BU
 F: Jenn Wakefield, BU

NCAA TOURNAMENT

Quarterfinals

BC def. St. Lawrence (6-3)
 Cornell def. BU (8-7 3OT)

Semifinals

Wisconsin def. BC (6-2)



2012-13 SEASON SNAPSHOT



2012-13 SEASON

Regular Season Champion

BOSTON UNIVERSITY

Tournament Champion

BOSTON UNIVERSITY

Cammi Granato Player of the Year

ALEX CARPENTER, BOSTON COLLEGE

Coach of the Year: Katie King Crowley, Boston College

Pro Ambitions Rookie of the Year: Haley Skarupa, Boston College

Three Stars Award: Kendall Coyne, Northeastern

Sportsmanship Award: Jill Cardella, Boston University

Goaltending Champion: Corinne Boyles, Boston College

Turfer Athletic Scoring Champion: Alex Carpenter, Boston College

Best Defenseman: Blake Bolden, Boston College

Gladiator Hockey Best Defensive Forward: Erin Wenthe, Vermont



Rk.	Standings	GP	W	L	T	Pts	Overall	GPG (GA)	GAPG	PP Pct.	PK Pct.
1.	Boston University	21	18	2	1	37	28-6-3	4.24 (89)	2.62 (55)	23.9% (22-92)	82.2% (83-101)
2.	Boston College	21	17	2	2	36	27-7-3	5.24 (110)	1.95 (41)	32.0% (24-75)	80.8% (79-73)
3.	Northeastern	21	13	7	1	27	23-11-2	4.38 (92)	2.86 (60)	25.6% (20-78)	80.3% (61-76)
4.	New Hampshire	21	10	8	3	23	14-16-4	2.48 (52)	2.76 (58)	24.7% (19-77)	86.6% (58-67)
5.	Providence	21	8	10	3	19	15-16-5	3.79 (76)	3.63 (78)	19.6% (18-92)	80.2% (69-86)
6.	Vermont	21	6	11	4	16	8-21-4	2.29 (48)	2.86 (60)	16.1% (15-93)	83.3% (80-96)
7.	Maine	21	2	16	3	7	5-24-4	1.71 (36)	4.19 (88)	11.1% (10-90)	75.7% (84-111)
8.	Connecticut	21	1	19	1	3	3-29-3	1.29 (27)	4.29 (90)	7.9% (6-76)	71.4% (45-63)

HOCKEY EAST LEADERS

Points

1. A. Carpenter - BC	48
2. K. Coyne - NU	43
3. H. Skarupa - BC	37
4. M. Poulin - BU	33
5. C. Pickett - BC	31

Wins

1. K. Sperry - BU	14
2. C. Boyles - BC	12
3. C. Desjardins - NU	11
4. J. Gilligan - UNH	8
5. S. Bryant - PC	6

Goals

1. A. Carpenter - BC	25
2. K. Coyne - NU	21
3. H. Skarupa - BC	15
C. Pickett - NU	15
5. J. Kohanchuk - BU	14
S. Lefort - BU	14

GAA

1. C. Boyles - BC	1.81
2. J. Gilligan - UNH	2.06
3. K. Sperry - BU	2.56
4. R. Douville - UVM	2.73
5. C. Desjardins - NU	2.81

Assists

1. A. Carpenter - BC	23
2. H. Skarupa - BC	22
M. Poulin - BU	22
K. Coyne - NU	22
5. I. Menard - BU	19

Save%

1. R. Douville - UVM	.923
2. J. Gilligan - UNH	.915
3. C. Boyles - BC	.912
4. C. Desjardins - NU	.900
5. K. Sperry - BU	.899

Points (Team Leaders)

1. A. Carpenter - BC	48
2. K. Coyne - NU	43
3. M. Poulin - BU	33
4. N. Anderson - PC	19
5. B. Zuback - UVM	18
6. C. Lavoie - UNH	17
7. B. Dougherty - ME	16
8. K. Campero - UConn	9
M. Cava - UConn	9

Saves

1. R. Douville - UVM	590
2. E. Chuli - UConn	569
3. B. Ott - ME	477
4. C. Desjardins - NU	416
5. S. Bryant - PC	392

HOCKEY EAST ALL-STARS

*All-American

First Team	Position	Second Team
Roxanne Douville - UVM	G	Corinne Boyles - BC
Blake Bolden - BC	D	Alexis Crossley - UNH
Shannon Doyle - BU	D	Emily Pfalzer - BC
Alex Carpenter - BC *	F	Jenelle Kohanchuk - BU
Kendall Coyne - NU *	F	Casey Pickett - NU
Marie-Philip Poulin - BU *	F	Haley Skarupa - BC

PRO AMBITIONS ALL-ROOKIE TEAM

D: Lexi Bender, Boston College
 D: Alexis Crossley, New Hampshire
 F: Molly Illikainen, Providence College \$
 F: Sarah Lefort, Boston University \$
 F: Haley Skarupa, Boston College \$
 F: Dana Trivigno, Boston College
 \$ denotes unanimous selection

WHEA ALL-TOURNAMENT TEAM

G: Kerrin Sperry, BU
 D: Blake Bolden, BC
 D: Shannon Doyle, BU
 F: Kendall Coyne, NU
 F: Marie-Philip Poulin, BU
 F: Louise Warren, BU

NCAA TOURNAMENT

Quarterfinals

BC def. Harvard (3-1)
 BU def. Clarkson (5-3)

Semifinals

Minnesota def. BC (3-2 2OT)
 BU def. Mercyhurst (4-1)

Finals

Minnesota def. BU (6-3)





2013-14 SEASON SNAPSHOT

Regular Season Champion

BOSTON COLLEGE

Tournament Champion

BOSTON UNIVERSITY

Warrior Player of the Year

SARAH LEFORT, BOSTON UNIVERSITY

Co-Coaches of the Year: Katie King Crowley, Boston College and Jim Plumer, Vermont

Pro Ambitions Rookie of the Year: Andie Anastos, Boston College

Three Stars Award: Louise Warren, Boston University

Sportsmanship Award: Jill Cardella, Boston University

Goaltending Champion: Haley Frade, Providence

Turfer Athletic Scoring Champion: Sarah Lefort, Boston University

Best Defenseman: Emily Pfalzer, Boston College

Gladiator Hockey Best Defensive Forward: Taylor Wasylik, Boston College



2013-14 SEASON

Rk.	Standings	GP	W	L	T	Pts	Overall	GPG (GF)	GAPG (GA)	PP Pct.	PK Pct.
1.	Boston College	21	18	2	1	37	27-7-3	3.86 (81)	1.67 (35)	19.1% (17-89)	86.1% (62-72)
2.	Boston University	21	14	7	0	28	24-13-1	3.43 (72)	2.57 (54)	17.8% (13-73)	87.8% (86-98)
	Northeastern	21	13	6	2	28	19-14-2	3.14 (66)	2.14 (45)	12.6% (12-95)	87.8% (86-98)
4.	Vermont	21	13	7	1	27	18-14-4	2.62 (55)	2.10 (44)	18.6% (16-86)	87.2% (75-86)
5.	Maine	21	5	13	3	13	7-20-5	2.05 (43)	3.57 (75)	10.0% (8-80)	77.0% (57-74)
	Connecticut	21	6	14	1	13	9-24-2	1.76 (37)	3.05 (64)	11.2% (9-80)	82.1% (64-78)
7.	Providence	21	6	15	0	12	11-24-0	2.33 (49)	3.05 (64)	13.7% (13-95)	83.2% (79-95)
8.	New Hampshire	21	4	15	2	10	9-23-2	2.14 (45)	3.19 (67)	14.8% (12-81)	89.7% (70-78)

HOCKEY EAST LEADERS

Points

1. S. Lefort - BU	36
2. L. Warren - BU	33
3. A. Anastos - BC	26
4. K. Wallace - NU	23
5. H. Skarupa - BC	22
A. Pelkey - UVM	22

Goals

1. S. Lefort - BU	19
2. L. Warren - BU	18
3. H. Skarupa - BC	16
4. A. Richards - ME	14
K. MacSorley - NU	14

Assists

1. S. Lefort - BU	17
2. P. Savage - NU	16
A. Anastos - BC	16
4. K. Fratkin - BU	15
L. Warren - BU	15
H. Frade - PC	15

Points (Team Leaders)

1. S. Lefort - BU	36
2. A. Anastos - BC	26
3. K. Wallace - NU	23
4. A. Pelkey - UVM	22
5. H. Frade - PC	21
6. S. MacDonnell - UConn	18
7. A. Richards - ME	16
N. Gifford - UNH	16

Wins

1. C. Boyles - BC	15
2. C. Desjardins - NU	13
3. K. Sperry - BU	12
R. Douville - UVM	12
5. E. Chuli - UConn	6
S. Bryant - PC	6

GAA

1. C. Boyles - BC	1.52
2. R. Douville - UVM	1.82
3. C. Desjardins - NU	2.08
4. K. Sperry - BU	2.39
5. E. Chuli - UConn	2.44

Save%

1. C. Boyles - BC	.945
2. R. Douville - UVM	.941
3. E. Chuli - UConn	.934
4. C. Desjardins - NU	.934
5. K. Sperry - BU	.927

Saves

1. C. Desjardins - NU	618
2. M. Treacy - ME	547
3. K. Sperry - BU	544
4. E. Chuli - UConn	539
5. R. Douville - UVM	531

HOCKEY EAST ALL-STARS

*All-American

First Team	Position	Second Team
Roxanne Douville - UVM	G	Corinne Boyles - BC
Emily Pfalzer - BC	D	Lexi Bender - BC
Kaleigh Fratkin - BU	D	Gina Repaci - UVM
Heather Mottau - NU	D	
Sarah Lefort - BU *	F	Brittany Esposito - NU
Haley Skarupa - BC	F	Amanda Pelkey - UVM
Louise Warren - BU	F	Kelly Wallace - NU

PRO AMBITIONS ALL-ROOKIE TEAM

D: Heather Mottau, Northeastern \$
 F: Andie Anastos, Boston College \$
 F: Victoria Andreacos, Vermont
 F: Cassidy Carels, Providence
 F: Maddie Elia, Boston University
 F: Hayley Scamurra, Northeastern
 F: Cassandra Vilgrain, UNH
 \$ denotes unanimous selection

WHEA ALL-TOURNAMENT TEAM

G: Kerrin Sperry, BU
 D: Kaleigh Fratkin, BU
 D: Kaliya Johnson, BC
 F: Kate Leary, BC
 F: Louise Warren, BU
 F: Rebecca Russo, BU

NCAA TOURNAMENT

Quarterfinals

Minnesota def. BU (5-1)
 Clarkson def. BC (3-1)



2014-15 SEASON SNAPSHOT



2014-15 SEASON

Regular Season Champion

BOSTON College

Tournament Champion

BOSTON UNIVERSITY

Cammi Granato Player of the Year

ALEX CARPENTER, BOSTON COLLEGE

Coach of the Year: Katie King Crowley, Boston College

Pro Ambitions Rookie of the Year: Victoria Bach, Boston University

Three Stars Award: Alex Carpenter, Northeastern

Sportsmanship Award: Beth Hanrahan, Providence College

Goaltending Champion: Katie Burt, Boston College

Squad Locker Scoring Champion: Alex Carpenter, Boston College

Best Defenseman: Emily Pfalzer, Boston College

Gladiator Custom Mouthguards Best Defensive Forward: Marie-Phillip Poulin, Boston Univ.



Rk.	Standings	GP	W	L	T	Pts	Overall	Offense	Defense	Power Play	Penalty Kill
1.	Boston College	21	20	0	1	41	32-1-2	5.43 GPG	0.86 GAPG	17.9%	94.3%
2.	Boston University	21	15	5	1	31	23-8-3	3.81 GPG	2.38 GAPG	19.2%	83.7%
3.	Northeastern	21	11	8	2	24	14-16-5	3.19 GPG	3.00 GAPG	25.0%	80.6%
4.	Vermont	21	9	11	1	19	10-20-3	2.19 GPG	3.48 GAPG	19.8%	77.8%
5.	Maine	21	5	11	5	15	11-17-8	1.95 GPG	2.76 GAPG	11.5%	86.8%
6.	Connecticut	21	6	13	2	14	10-23-3	2.38 GPG	3.43 GAPG	17.5%	84.1%
7.	Providence	21	6	14	1	13	15-19-2	1.90 GPG	3.62 GAPG	12.8%	80.4%
8.	New Hampshire	21	5	15	1	11	6-25-4	1.90 GPG	3.24 GAPG	12.5%	76.2%

HOCKEY EAST LEADERS

Points

- Alex Carpenter - BC 41
- Kendall Coyne - NU 39
- Haley Skarupa - BC 33
- Marie-Philip Poulin - BU 26
- Sarah Lefort - BU 26

Wins

- Katie Burt - BC 16
- Chloe Desjardins - NU 10
- Erin O'Neil - BU 8
- Meghann Treacy - ME 8
- Victoria Hanson - BU 7

Goals

- Kendall Coyne - NU 21
- Alex Carpenter - BC 20
- Haley Skarupa - BC 16
- Sarah Lefort - BU 16
- Victoria Bach - BU 13

GAA

- Katie Burt - BC 0.61
- Victoria Hanson - BU 2.00
- Erin O'Neil - BU 2.34
- M. Treacy - Maine 2.60
- C. Desjardins - NU 2.68

Assists

- Alex Carpenter - BC 21
- Kenzie Kent - BC 21
- Emily Pfalzer - BC 19
- Kendall Coyne - NU 18
- Lexi Bender - BC 18

Save%

- Katie Burt - BC .965
- M. Treacy - Maine .929
- Victoria Hanson - BU .923
- C. Desjardins - NU .923
- A. Belanger - UConn .921

Saves

- M. Treacy - Maine 643
- C. Desjardins - NU 573
- Allie Morse - PC 507
- M. Litchfield - UVM 467
- Elaine Chuli - UConn 466

HOCKEY EAST ALL-STARS

First Team

Pos.

Second Team

- | | | |
|---------------------------------|---|-------------------------|
| Meghann Treacy, Maine (Jr.) | G | Katie Burt, BC (Fr.) |
| Megan Keller, BC (Fr.) | D | Lexi Bender, BC (Jr.) |
| Emily Pfalzer, BC (Sr.) * | D | Shannon Doyle, BU (Sr.) |
| Alex Carpenter, BC (Jr.) * | F | Sarah Lefort, BU (Jr.) |
| Kendall Coyne, NU (Jr.) * | F | Haley Skarupa, BC (Jr.) |
| Marie-Philip Poulin, BU (Sr.) * | F | Kayla Tutino, BU (Jr.) |

PRO AMBITIONS ALL-ROOKIE TEAM

- G: Katie Burt, Boston College
 D: Megan Keller, Boston College *
 F: Victoria Bach, Boston University *
 F: Denisa Křížová, Northeastern *
 F: Rebecca Leslie, Boston University
 F: Leah Lum, UConn
 F: Tori Sullivan, Boston College
 * denotes unanimous selection

WHEA ALL-TOURNAMENT TEAM

- G: Elaine Chuli, UConn
 D: Emily Pfalzer, BC
 D: Shannon Doyle, BU
 F: Alex Carpenter, BC
 F: Marie-Philip Poulin, BU
 F: Kayla Tutino, BU

NCAA TOURNAMENT

Quarterfinals

- BC def. Clarkson (5-1)
 Wisconsin def. BU (5-1)

Semifinals

- Harvard def. BC (2-1)



2014-15 MONTHLY & WEEKLY HONOREES

WARRIOR HOCKEY PLAYER OF THE WEEK

Week	Player
Sept. 29	Kelsey MacSorely, D - Maine
Oct. 6	Lexi Bender, D - Boston College
Oct. 13	Amanda Pelkey, F - Vermont
Oct. 20	Marie-Philip Poulin, F - Boston University
Oct. 27	Audra Richards, F - Maine
Nov. 3	Rebecca Russo, F - Boston University
Nov. 10	Kate Leary, F - Boston College
Nov. 17	Kendall Coyne, F - Northeastern
Nov. 24	Sarah Lefort, F - Boston University
Dec. 1	Hayley Skarupa, F - Boston College
Dec. 8	Sarah Lefort, F - Boston University
Dec. 15	Alex Carpenter, F - Boston College
Jan. 5	Delia McNally, F - Vermont
Jan. 12	Beth Hanrahan, F - Providence
Jan. 19	Alex Carpenter, F - Boston College
Jan. 26	Jennifer More, F - Maine
Feb. 2	Dayna Colang, F - Vermont
Feb. 9	Amanda Pelkey, F - Vermont
Feb. 16	Sarah Lefort, F/Alex Carpenter, F - BU/BC
Feb. 23	Kendall Coyne, F - Northeastern
March 2	Kayla Tutino, F - Boston University
March 9	Marie-Philip Poulin, F - Boston University
March 16	Alex Carpenter, F - Boston College
March 23	Alex Carpenter, F - Boston College Emily Field, F - Boston College

PRO AMBITIONS ROOKIE OF THE WEEK

Week	Player
Sept. 29	Taytum Clairmont, F - Northeastern
Oct. 6	Rebecca Leslie, F - Boston University
Oct. 13	Amy Boucher, F - New Hampshire
Oct. 20	Ainsley MacMillan, D - Northeastern
Oct. 27	Katie Burt, G - Boston College
Nov. 3	Tori Sullivan, F - Boston College
Nov. 10	Brooke Boquist, F - Providence College
Nov. 17	Victoria Bach, F - Boston University
Nov. 24	McKenna Brand, F/Denisa Krizova, F - Northeastern
Dec. 1	Kenzie Kent, F - Boston College
Dec. 8	Amy Boucher, F - New Hampshire
Dec. 15	Erin O'Neil, G - Boston University
Jan. 5	Taylor Willard, D - Vermont
Jan. 12	Megan Keller, D - Boston College
Jan. 19	Amy Boucher, F - New Hampshire
Jan. 26	Annie Belanger, G - UConn
Feb. 2	Kenie Kent, F - Boston College
Feb. 9	Katie Burt, G - Boston College
Feb. 16	Annie Belanger, G - UConn
Feb. 23	Katie Burt, G - Boston College
March 2	Denisa Krizova, F - Northeastern
March 16	Katie Burt, F - Boston College

HOCKEY EAST DEFENSIVE PLAYER OF THE WEEK

Week	Player
Sept. 29	Elaine Chuli, G - UConn
Oct. 6	Madison Litchfield, G - Vermont
Oct. 13	Vilma Vaattovaara, G - New Hampshire
Oct. 20	Lexi Bender, D - Boston College
Oct. 27	Sarah Campbell, D - Vermont
Nov. 3	Chloe Desjardins, G - Northeastern
Nov. 10	Ashley Wilkes, G - New Hampshire
Nov. 17	Allie Morse, G - Providence College
Nov. 24	Emily Pfalzer, D - Boston College
Dec. 1	Elaine Chuli, G - UConn
Dec. 8	Vilma Vaattovaara, G - New Hampshire
Dec. 15	Katie Burt, G - Boston College
Jan. 5	Elaine Chuli, G - UConn
Jan. 12	Elaine Chuli, G - UConn/Emily Pfalzer, D - BC
Jan. 19	Katie Burt, G - BC/Vilma Vaattovaara, G - UNH
Jan. 26	Victoria Hanson, G - Boston University
Feb. 2	Shannon Doyle, D - Boston University
Feb. 9	Chloe Desjardins, G - Northeastern
Feb. 16	Vilma Vaattovaara, G - New Hampshire
Feb. 24	Madison Litchfield, G - Vermont
March 2	Elaine Chuli, G - UConn
March 9	Elaine Chuli, G - UConn
March 16	Katie Burt, G - Boston College

WARRIOR HOCKEY PLAYER OF THE MONTH

Month	Player
October	Alex Carpenter, F - Boston College
November	Alex Carpenter, F - Boston College
December	Haley Skarupa, F - Boston College
January	Marie-Philip Poulin, F - Boston University
February	Marie-Philip Poulin, F - Boston University

PRO AMBITIONS ROOKIE OF THE MONTH

Month	Player
October	Rebecca Leslie, F - Boston University
November	Kenzie Kent, F - Boston College
December	Katie Burt, G - Boston College
January	Denisa Krizova, F - Northeastern
February	Victoria Bach, F - Boston University

STOP IT GOALTENDER OF THE MONTH

Month	Player
October	Meghann Treacy - Maine
November	Meghann Treacy - Maine
December	Katie Burt - Boston College
January	Katie Burt - Boston College
February	Elaine Chuli - Connecticut



2014-15 SEASON SUPERLATIVES



SHUTOUTS

Date	Goalie	Team	Opp.	Svs	Result
10/10	Vilma Vaattovaara	UNH	at RIT	32	W, 1-0
10/17	Chloe Desjardins	NU	at Mercyhurst	26	W, 4-0
10/19	Katie Burt	BC	at UNH	21	W, 4-0
10/24	Maddie Litchfield	UVM	.vs Union	11	W, 4-0
10/25	Molly Depew	UVM	.vs Union	13	W, 4-0
10/30	Chloe Desjardins	NU	at UNH	28	W, 2-0
11/1	Mariah Fujimagari	Maine	at NU	20	W, 1-0
11/2	Maddie Litchfield	UVM	.vs UConn	19	W, 6-0
11/16	Katie Burt	BC	at UNH	18	W, 6-0
11/22	Katie Burt	Bc	at UConn	16	W, 6-0
11/25	Katie Burt	BC	at Yale	18	W, 4-0
11/29	Meghann Treacy	Maine	at UVM	38	W, 3-0
12/5	Vilma Vaattovarra	UNH	at Providence	30	W, 5-0
1/17	Katie Burt	BC	at UVM	21	W, 4-0
1/18	Katie Burt	BC	at UVM	13	W, 2-0
1/18	Meghann Treacy	Maine	at Providence	30	W, 2-0
1/23	Vilma Vaattovarra	UNH	vs Penn State	20	W, 2-0
1/24	Maddie Litchfield	UVM	at BU	39	W, 2-0
1/31	Meghann Treacy	Maine	at UNH	36	W, 3-0
2/6	Katie Burt	BC	vs UConn	19	W, 6-0
2/13	Katie Burt	BC	vs Maine	9	W, 6-0
2/19	Katie Burt	BC	vs. BU	28	W, 5-0

40+ SAVES

Date	Goalie	Team	Opp.	Svs	Result
9/26	Elaine Chuli	UConn	vs. Minnesota Duluth	54	T, 4-4 OT
10/10	Meghann Treacy	Maine	vs. Mercyhurst	41	L, 0-1
10/18	Meghann Treacy	Maine	vs. Quinnipiac	41	L, 0-2
10/25	Meghann Treacy	Maine	vs. BU	41	W, 4-2
11/15	Allie Morse	PC	vs. Northeastern	42	W, 4-1
11/22	Annie Belanger	UConn	vs. BC	41	L, 0-6
11/23	Molly Depew	UVM	at Northeastern	41	L, 1-5
11/28	Elaine Chuli	UConn	vs. Clarkson	51	L, 1-2 OT
11/29	Ashley Wilkes	UNH	vs. Wisconsin	44	L, 0-5
1/3	Elaine Chuli	UConn	at Northeastern	42	T, 3-3 OT
1/10	Elaine Chuli	UConn	at UVM	55	W, 5-1
1/17	Elaine Chuli	UConn	vs. UNH	52	L, 2-3 OT
1/18	Chloe Desjardins	NU	vs. BU	45	L, 3-4
1/18	Madison Litchfield	UVM	vs. BC	49	L, 0-2
1/24	Chloe Desjardins	NU	at Maine	40	W, 5-2
1/25	Meghann Treacy	Maine	vs. Northeastern	40	W, 4-2
1/30	Allie Morse	PC	vs. BC	44	L, 2-4
2/7	Meghann Treacy	Maine	vs. UVM	53	L, 1-2 OT
2/8	Elaine Chuli	UConn	at UNH	45	T, 2-2 OT
2/14	Meghann Treacy	Maine	at BC	42	L, 1-4
2/14	Vilma Vaattovaara	UNH	at UVM	43	L, 2-2 OT
2/15	Chloe Desjardins	NU	at UConn	42	T, 2-2 OT
2/21	Elaine Chuli	UConn	at Maine	40	W, 2-1 OT
2/22	Madison Litchfield	UVM	at PC	41	W, 3-2

HAT TRICKS

Date	Player (career)	Team	Opponent	Result
10/4	Lexi Bender (1)	BC	vs. Syracuse	W, 10-2
11/11	Kendall Coyne (4)	NU	at BU	W, 6-3
11/14	Dayna Colang (1)	UVM	at Syracuse	W, 6-5 OT
11/23	Sarah Lefort (4)	BU	vs. UNH	W, 6-2
1/18	Kendall Coyne (5)	NU	vs. BU	L, 4-3
2/1	Dayna Colang (2)	UVM	vs. Providence	W, 7-3
2/14	Sarah Lefort (5)	BU	at Providence	W, 6-1
2/16	Sarah Lefort (6)	BU	vs. Providence	W, 7-1

OVERTIME GOALS

Date	Player	Team	Opponent	Result
10/3	Victoria Hummel	Maine	vs. Robert Morris	W, 3-2
11/14	Brittany Zuback	UVM	at Syracuse	W, 6-5
11/23	Beth Hanrahan	PC	at Maine	W, 2-1
1/17	Amy Schlagel	UNH	at UConn	W, 3-2
2/6	Hayley Masters	NU	vs. Providence	W, 2-1
2/7	Amanda Pelkey	UVM	at Maine	W, 2-1
2/21	Sarah MacDonnell	UConn	at Maine	W, 2-1

INDIVIDUAL HIGHS

Goals:	3	Kendall Coyne, NU (11/11 at Boston University)
	3	Dayna Colang, UVM (11/14 at Syracuse)
	3	Haley Scamurra, NU (11/22 vs. Vermont)
	3	Sarah Lefort, BU (11/23 vs. New Hampshire)
	3	Kendall Coyne, NU (1/18 vs. Boston University)
	3	Dayna Colang, UVM (2/1, vs. Providence)
	3	Sarah Lefort, BU (2/14 at Providence)
	3	Sarah Lefort, BU (2/16 vs. Providence)
Points:	6	Alex Carpenter, BC (11/28 vs. Harvard)
Assists:	4	Alex Carpenter, BC (11/28 vs. Harvard)
Point Streak:	25	Alex Carpenter, BC (10/4/14 to 2/3/15; 27-35-62)
Saves:	55	Elaine Chuli, UConn (1/10 vs. UVM)

TEAM HIGHS

Goals:	10	Boston College vs. Syracuse (10/4)
	10	Boston College vs. New Hampshire (11/15)
	10	Boston College vs. Harvard (11/28)
In league play:	10	Boston College vs. New Hampshire (11/15)
Shots on Goal:	59	Northeastern vs. Union (12/2)
Shots in a Period:	23	UVM at UConn (1/10; 2nd period)
	23	Northeastern at UConn (2/15; 2nd period)
Consecutive Wins:	25	Boston College (10/19 to 2/6; 25-0-0)
In league play:	20	Boston College (10/19 to 2/19; 20-0-0)
Unbeaten Streak:	28	Boston College (10/4 to 2/6; 27-0-1)
In league play:	21	Boston College (10/19 to present; 20-0-1)

THE LAST TIME

A player had four goals:

Casey Pickett, NU (11/3/13 vs. UConn)

A rookie had a hat trick:

Cassidy Carels, PC (11/23/13 vs. Maine)

In league play: Cassidy Carels, PC (11/23/13 vs. Maine)

A defenseman had a hat trick:

Lexi Bender, BC, 10/4/14 vs. Syracuse

A goaltender recorded 50 saves:

Meghann Treacy, Maine, 2/7/15 at Vermont (53)

In league play: Meghann Treacy, Maine, 2/7/15 at Vermont (53)

A team won 10 games in a row:

Boston College, 25 games, 10/19/14 to 2/6/15

In league play: Boston College, 20 games (10/19/14 to 2/19/14)

A team was unbeaten in 10 straight games:

Boston College 28 (27-0-1), 10/4/14 to 2/6/15

In league play: BC 21 games (20-0-1), 10/19/14 to present)

A team recorded 50 shots-on-goal:

In league play: 50, Northeastern vs. UConn (2/15/15)





INDIVIDUAL HOCKEY EAST AWARDS

WHEA AWARDS

WARRIOR CAMMI GRANATO PLAYER OF THE YEAR



The Warrior Cammi Granato Player of the Year Award, renamed in 2008 to honor former Providence College superstar Cammi Granato, is awarded annually by the head coaches to a player who has demonstrated the most superior play and leadership for her team. Granato had a legendary career, establishing many scoring records for the Friars (139 goals in 99 games). She captured ECAC Player of the Year honors from 1991-93, while leading the team to back-to-back conference titles in 1992 and 1993. A 15-year member of the U.S. Women's National Team, Granato is the program's all-time scoring leader. She achieved international fame by captaining Team USA to the gold medal at the 1998 Olympic Winter Games.

Junior Boston College forward Alex Carpenter (North Reading, Massachusetts) was unanimously selected as the Warrior Cammi Granato Player of the Year in 2014-15 after turning in the third-highest point total in league history (20-21-41) in just 19 league games. Carpenter led the NCAA in goals (37), assists (44) and points (81) and notched a nation-high nine game-winning tallies. Her 81 points set a Boston College single-season record and captured the 2015 Patty Kazmaier Memorial Award, the highest individual honor in women's college hockey. Carpenter also won the award after the 2012-13 season, joining Kelli Stack as the only two Eagles to even win the honor multiple times during their collegiate careers.

In recognition of her outstanding play throughout the season, Carpenter was named Warrior Hockey Player of the Month in October and November 2014.

Player of the Year Award History

Season	Player	Pos.
2002-03	Jen Huggon, UNH	G
2003-04	Carolyn Gordon, UNH	F
	Chanda Gunn, NU	G
2004-05	Stephanie Jones, UNH	F
	Karen Thatcher, PC	F
2005-06	Sadie Wright-Ward, UNH	F
2006-07	Kelli Stack, BC	F
2007-08	Dominique Thibault, UConn	F
2008-09	Kelli Stack, BC	F
2009-10	Kelly Paton, UNH	F
	Florence Schelling, NU	G
2010-11	Kelli Stack, BC	F
2011-12	Florence Schelling, NU	G
2012-13	Alex Carpenter, BC	F
2013-14	Sarah Lefort, BU	F
2014-15	Alex Carpenter, BC	F

Rookie of the Year Award History

Season	Player	Pos.
2002-03	Lindsay Hansen, UNH	F
2003-04	Sonny Watrous, PC	F
2004-05	Jaclyn Hawkins, UConn	F
2005-06	Samantha Faber, UNH	F
2006-07	Kelli Stack, BC	F
2007-08	Jenn Wakefield, UNH	F
2008-09	Genevieve Lacasse, PC	G
2009-10	Kristina Lavoie, UNH	F
2010-11	Marie-Philip Poulin, BU	F
2011-12	Kendall Coyne, NU	F
2012-13	Haley Skarupa, BC	F
2013-14	Andie Anastos, BC	F
2014-15	Victoria Bach, BU	F

PRO AMBITIONS ROOKIE OF THE YEAR

Bach lead the league in freshman goal-scoring with 14 markers and added six assists for 20 points in 22 league games for the Terriers. She had seven multi-point outings including four games with at least three points. She earned Pro Ambitions Rookie of the Week honors Nov. 17, 2014 after helping BU to a weekend sweep of UConn, potting two goals in the process, and was tabbed Pro Ambitions Rookie of the Month in February as she lead all NCAA freshmen with 12 points and seven assists in the month. Bach is the second Boston University skater to win the top freshman honor, following teammate Marie-Philip Poulin who won the award in 2011.



COACH OF THE YEAR



This award is bestowed annually to a head coach who is considered to have demonstrated the highest number of significant accomplishments over the course of the season as voted by the conference's head coaches. Boston College's Katie King-Crowley earns Coache of the Year honors for the second straight season.

King-Crowley was named Hockey East Coach of the Year for the second consecutive year after guiding the Eagles to the best season in program history, compiling a 30-1-2 record during the regular season and claiming the No. 1 national ranking for 14 weeks, the first time the Eagles ascended to the top of the rankings.

She helped guide the team to their most wins in a season in school history (34) and goals scored in a season in school history (195) in 2014-15. Crowley also led the Eagles to the fifth Frozen Four berth in program history.

Coach of the Year Award History

Season	Coach
2002-03	Brian McCloskey, UNH
2003-04	Joy Woog, NU
2004-05	Brian McCloskey, UNH
	Tom Mutch, BC
2005-06	Brian McCloskey, UNH
2006-07	Tom Mutch, BC
2007-08	Brian Durocher, BU
2008-09	Brian McCloskey, UNH
2009-10	Bob Deraney, PC
2010-11	Bob Deraney, PC
2011-12	Dave Flint, NU
	Maria Lewis, Maine
2012-13	Katie King Crowley, BC
2013-14	Katie King Crowley, BC
	Jim Plumer, UVM
2014-15	Katie King Crowley, BC



NATIONAL AWARDS



CCM ALL-AMERICANS

The CCM All-American Teams are selected annually by the American Hockey Coaches Association, they are announced at the end of the season at the Women's Frozen Four.

FIRST-TEAM ALL-AMERICANS

Jen Huggon, UNH	2003
Chanda Gunn, NU	2004
Kelly Halcisak, PC	2004
Martine Garland, UNH	2006
Sadie Wright, Ward, UNH	2006
Kacey Bellamy, UNH	2009
Kelly Paton, UNH	2010
Molly Schaus, BC	2011
Florence Schelling, NU	2012

SECOND-TEAM ALL-AMERICANS

Kelly Halcisak, PC	2003
Kristin Gigliotti, PC	2006
Jennifer Hitchcock, UNH	2006
Karen Thatcher, PC	2006
Martine Garland, UNH	2008
Dominique Thibault, UConn	2008
Molly Schaus, BC	2009
Kelli Stack, BC	2009
Courtney Birchard, UNH	2010
Florence Schelling, NU	2010
Kelli Stack, BC	2011
Catherine Ward, BU	2011
Blake Bolden, BC	2013
Alex Carpenter, BC	2013
Kendall Coyne, NU	2013
Sarah Lefort, BU	2014



U.S. Olympians

Team USA won the first-ever Olympic gold medal presented for women's ice hockey, defeating long-time nemesis Team Canada in the 1998 games. The squad included 12 former Huskies, Wildcats and Friars, and was captained by Providence legend Cammi Granato. Granato and seven others returned to claim silver in 2002. Hockey East placed four student-athletes on the silver-medal winning team at the 2010 Winter Olympics and five more on the Team USA roster for the 2014 games.

Player	Grad Year	Olympics
Chris Bailey, F	PC '94	'98, '02
Laurie Baker, F	PC '00	'98, '02
Kacey Bellamy, D	UNH '09	'10, '14
Alana Blahoski, F	PC '96	'98
Lisa Brown-Miller, F	PC '88	'98
Karyn Bye, F	UNH '93	'98, '02
Alex Carpenter, F	BC '16	'14
Colleen Coyne, D	UNH '93	'98
Kendall Coyne, F	NU '16	'14

PATTY KAZMAIER AWARD

Presented annually since 1997-98 to the top player in women's college ice hockey, the Patty Kazmaier Award was first won by Brandy Fisher of UNH. Below is a list of Hockey East Top 10 finalists, with winners in **bold**.

1997-98	Brandy Fisher, UNH
	Stephanie Acres, Northeastern
	Jessica Tabb, Providence
	Hilary Witt, Northeastern
1998-99	Sara DeCosta, Providence
	Nicki Luongo, UNH
	Hilary Witt, Northeastern
	Carisa Zaban, UNH
1999-00	Sara DeCosta, Providence
	Hilary Witt, Northeastern
	Carisa Zaban, UNH !
2000-01	Michelle Thornton, UNH
	Erika Silva, Northeastern
	Jessica Tabb, Providence
2001-02	Brooke Whitney, Northeastern
	Chanda Gunn, Northeastern
	Kira Misikowetz, UNH
2002-03	Chanda Gunn, Northeastern
	Kelli Halcisak, Providence
2003-04	Chanda Gunn, Northeastern
	Kelli Halcisak, Providence
2005-06	Nicole Hekle, UNH
	Karen Thatcher, Providence
2007-08	Sam Faber, UNH
	Martine Garland, UNH
2008-09	Molly Schaus, Boston College
	Jenn Wakefield, UNH
2009-10	Kelly Paton, UNH
	Florence Schelling, Northeastern
2010-11	Molly Schaus, Boston College
	Kelli Stack, Boston College
2011-12	Florence Schelling, Northeastern
2012-13	Alex Carpenter, Boston College
	Kendall Coyne, Northeastern
2013-14	Sarah Lefort, Boston University
2014-15	Alex Carpenter, Boston College
	Kendall Coyne, Northeastern
	Emily Pflazer, Boston College
	Marie-Philip Poulin, Boston Univ.
	Haley Skarupa, Boston College

HOCKEY HUMANITARIAN

Arguably the highest individual honor in the sport of college ice hockey, the Hockey Humanitarian Award bridges any gender gap between the men's and women's game as well as any perceived talent gap between divisions. Annually presented to the athlete that best demonstrates the highest qualities of humanity, the award has become a symbol for everything that is right with college athletics, and it is an honor just to be nominated for the award, or to be selected as one of the annual finalists.

Winners in **bold**. !-Finalist

Past Nominees

2002-03	Chanda Gunn, NU !
2003-04	Chanda Gunn, NU
2004-05	Sarah Carlson, BC
2005-06	Janelle Armitage, UConn !
2007-08	Missy Elumba, NU
2008-09	Missy Elumba, NU
2011-12	Ashley Norum, Maine
2013-14	Danielle Rancourt, UVM !
	Kelly Wallace, NU



NU's Missy Elumba was the third Women's Hockey East player to win the prestigious Hockey Humanitarian Award



Chanda Gunn won the Humanitarian Award in 2004 and was the starting goalie for the 2006 U.S. Olympic team





SCORING RECORDS

League games only
(D) - defenseman ! - rookie

Career Points

Rk.	Name	Seasons	GP	G	A	Pts	PPG
1.	Kelli Stack, BC	2006-11	84	68	65	133	1.58
2.	Jenn Wakefield, BU/UNH	2007-12	73	71	50	121	1.65
3.	Sam Faber, UNH	2005-09	80	45	73	118	1.48
4.	Kendall Coyne, NU	2011-	56	61	51	112	2.00
5.	Alex Carpenter, BC	2011-	61	57	52	109	1.79
6.	Jennifer Hitchcock, UNH	2004-08	83	61	47	108	1.30
7.	Sadie Wright-Ward, UNH	2004-08	79	40	60	100	1.27
8.	Kelly Paton, UNH	2006-10	82	36	60	96	1.17
9.	Jaclyn Hawkins, UConn	2004-08	81	51	43	94	1.16
10.	Haley Skarupa, BC	2012-	54	47	45	92	1.70

Career Goals

Rk.	Name	Seasons	GP	G	A	Pts	GPG
1.	Jenn Wakefield, BU/UNH	2007-12	73	71	50	121	0.97
2.	Kelli Stack, BC	2006-11	84	68	65	133	0.81
3.	Kendall Coyne, NU	2011-	56	61	51	112	1.09
	Jennifer Hitchcock, UNH	2004-08	83	61	47	108	0.73
5.	Alex Carpenter, BC	2011-	61	57	52	109	0.93
6.	Allie Thunstrom, BC	2006-10	84	53	34	87	0.98
7.	Jaclyn Hawkins, UConn	2004-07	81	51	43	94	0.63
8.	Sarah Lefort, BU	2012-	63	49	41	90	0.78
9.	Haley Skarupa, BC	2012-	54	47	45	92	0.87
10.	Sam Faber, UNH	2005-08	80	45	73	118	0.56

Career Assists

Rk.	Name	Seasons	GP	G	A	Pts	APG
1.	Sam Faber, UNH	2005-09	80	45	73	118	0.91
2.	Kelli Stack, BC	2006-11	84	68	65	133	0.77
3.	Lindsay Hansen, UNH	2002-06	75	23	63	86	0.84
4.	Sadie Wright-Ward, UNH	2004-08	79	40	60	100	0.76
5.	Kelly Paton, UNH	2006-10	82	36	60	96	0.73
6.	Martine Garland, UNH (D)	2003-08	79	6	56	62	0.71
7.	Emily Field, BC	2011-15	83	27	53	80	0.64
8.	Marie-Philip Poulin, BU	2010-15	57	37	52	89	0.91
	Alex Carpenter, BC	2011-	61	57	52	109	0.85
10.	Jenn Wakefield, BU/UNH	2007-12	73	71	50	121	0.68

Single Season Points

Name	Season	GP	G	A	Pts	PPG	
1.	Alex Carpenter, BC	2012-13	21	25	23	48	2.29
2.	Kendall Coyne, NU	2012-13	19	21	22	43	2.26
3.	Alex Carpenter, BC	2014-15	19	20	21	41	2.16
4.	Kendall Coyne, NU	2014-15	18	21	18	39	2.17
	Sadie Wright-Ward, UNH	2005-06	21	18	21	39	1.86
6.	Jennifer Hitchcock, UNH	2005-06	21	18	20	38	1.81
7.	Haley Skarupa, BC !	2012-13	18	15	22	37	2.06
8.	Sarah Lefort, BU	2013-14	21	19	17	36	1.71
	Kelli Stack, BC	2008-09	21	15	21	36	1.71
10.	Kelli Stack, BC !	2006-07	21	13	21	34	1.62
	Micaela Long, UNH	2009-10	21	7	27	34	1.62

Single Season Goals

Name	Season	GP	G	A	Pts	GPG	
1.	Alex Carpenter, BC	2012-13	21	25	23	48	1.19
2.	Kelli Stack, BC	2010-11	21	22	11	33	1.05
3.	Allie Thunstrom, BC !	2006-07	21	21	10	31	1.00
	Jenn Wakefield, UNH	2008-09	21	21	9	30	1.00
	Kendall Coyne, NU	2012-13	19	21	22	43	1.11
6.	Carolyn Gordon, UNH	2003-04	20	20	8	28	1.00
7.	Jenn Wakefield, UNH	2007-08	18	19	14	33	1.06
	Kendall Coyne, NU !	2011-12	19	19	11	30	1.00
	Sarah Lefort, BU	2013-14	21	19	17	36	0.90

Single Season Assists

Name	Season	GP	G	A	Pts	APG	
1.	Kelly Paton, UNH	2009-10	21	12	30	32	0.95
2.	Micaela Long, UNH	2009-10	21	7	27	34	1.27
3.	Lindsay Hansen, UNH	2003-04	19	8	23	31	1.21
	Alex Carpenter, BC	2012-13	21	25	23	48	1.09
5.	Darlene Stephenson, PC	2003-04	20	4	22	26	1.10
	Martine Garland, UNH (D)	2005-06	20	1	22	23	1.10
	Haley Skarupa, BC !	2012-13	18	15	22	37	1.22
	Marie-Philip Poulin, BU	2012-13	19	11	22	33	1.16
	Kendall Coyne, NU	2012-13	19	21	22	43	1.16
10.	Several tied with 21						



BC forward Kelli Stack is the all-time leading scorer in Hockey East play with 133 points in 84 league games

Active Career Point Leaders

Rk.	Name	Cl.	GP	PPG	G	A	Pts
1.	Kendall Coyne, NU	Sr.	56	2.00	61	51	112
2.	Alex Carpenter, BC	Sr.	61	1.79	57	52	109
3.	Haley Skarupa, BC	Sr.	54	1.70	47	45	92
4.	Sarah Lefort, BU	Sr.	63	1.43	49	41	90
5.	Kayla Tutino, BU	Sr.	68	0.99	27	40	67
6.	Dana Trivigno, BC	Sr.	58	0.97	24	32	56
7.	Paige Savage, NU	Sr.	38	0.92	11	24	35
8.	Andie Anastos, BC	Jr.	42	1.07	18	27	45
	Nicoline Jensen, UNH	Sr.	54	0.83	19	26	45
10.	Lexi Bender, BC (D)	Sr.	63	0.68	7	36	43
11.	Dana Colang, UVM	Sr.	63	0.62	18	21	39
12.	Paige Savage, NU	Sr.	40	0.90	11	25	36
13.	Audra Richards, ME	Sr.	63	0.56	24	11	35
14.	Heather Mottau, NU (D)	Jr.	42	0.74	6	25	31
15.	Lillian Ribeirinha-Braga, BU (D)	Jr.	58	0.50	3	26	29
16.	Haley Scamurra, NU	Jr.	31	0.90	12	16	28
	Cassidy Carels, PC	Jr.	42	0.67	15	13	28
18.	Maddie Elia, BU	Jr.	41	0.66	12	15	27
19.	Samantha Sutherland, BU	Jr.	42	0.62	7	19	26
20.	Kenzie Kent, BC	So.	21	1.19	4	21	25
	Kristyn Capizzano, BC	Jr.	41	0.61	13	12	25
	Gina Repaci, UVM (D)	Sr.	56	0.45	3	22	25
	Sara Carlson, UNH	Sr.	63	0.40	7	18	25



GOALTENDING RECORDS

League games only
! - rookie



GOALIE RECORDS

Career GAA (min. 25 games)

Rk.	Name	Seasons	GP	W-L-T	GA	GAA
1.	Melissa Bourdon, UNH	2003-07	64	52-5-5	94	1.51
2.	Kayley Herman, UNH	2007-11	51	33-10-8	80	1.58
3.	Florence Schelling, NU	2008-12	63	29-22-11	110	1.73
4.	Melissa Haber, BU	2006-10	38	20-9-8	67	1.76
5.	Molly Schaus, BC	2006-11	59	46-24-9	138	1.77
6.	Genevieve Lacasse, PC	2008-12	75	42-24-8	138	1.84
7.	Corinne Boyles, BC	2009-14	68	46-14-6	123	1.89
8.	Alexandra Garcia, UConn	2008-12	58	19-24-11	106	1.91
9.	Jana Bugden, PC	2002-07	61	37-17-4	117	2.03
10.	Kaitlyn Shain, UConn	2002-06	49	22-18-6	97	2.05

Single Season GAA (min. 10 games)

Rk.	Name	Season	GP	W-L-T	GA	GAA
1.	Katie Burt, BC !	2014-15	17	16-0-1	10	0.61
2.	Kayley Herman, UNH	2007-08	18	17-0-1	15	0.83
3.	Jen Huggon, UNH	2002-03	15	13-2-0	13	0.89
4.	Melissa Bourdon, UNH	2005-06	16	14-1-1	19	1.18
5.	Kerrin Sperry, BU	2010-11	15	12-1-2	18	1.19
6.	Melissa Bourdon, UNH	2006-07	16	14-1-1	19	1.23
7.	Florence Schelling, NU	2011-12	21	15-3-3	27	1.27
8.	Molly Schaus, BC	2010-11	20	13-4-3	28	1.39
9.	Alexandra Garcia, UConn	2009-10	20	10-4-6	29	1.42
10.	Jana Bugden, PC !	2002-03	14	13-1-0	20	1.45

Career SV% (min. 25 games)

Rk.	Name	Seasons	GP	W-L-T	Svs	SP
1.	Florence Schelling, NU	2008-12	63	29-22-11	1731	.940
2.	Genevieve Lacasse, PC	2008-12	75	42-24-8	1927	.933
3.	Alexandra Garcia, UConn	2008-12	41	19-15-9	1446	.938
4.	Kaitlyn Shain, UConn	2002-06	49	22-18-6	1278	.929
	Chanda Gunn, NU	2002-04	32	10-17-5	922	.929
	Melissa Haber, BU	2006-10	38	20-9-8	880	.929
	Molly Schaus, BC	2006-11	79	46-24-9	1810	.929
8.	Corinne Boyles, BC	2009-14	68	46-14-6	1564	.927
9.	Roxanne Douville, UVM	2010-14	73	23-36-11	2143	.925
10.	Kayley Herman, UNH	2007-11	51	33-10-8	965	.923
	Lara Smart, Maine	2002-04	30	11-15-4	816	.923

Single Season SV% (min. 10 games)

Rk.	Name	Season	GP	W-L-T	Svs	SV%
1.	Katie Burt, BC !	2014-15	17	16-0-1	278	.965
2.	Florence Schelling, NU	2011-12	21	15-3-3	580	.956
3.	Jen Huggon, UNH	2002-03	15	13-2-0	263	.953
4.	Florence Schelling, NU	2009-10	15	7-4-4	403	.946
5.	Corinne Boyles, BC	2013-14	19	15-2-1	482	.945
	Kerrin Sperry, BU	2010-11	15	12-1-2	310	.945
7.	Kayley Herman, UNH	2007-08	18	17-0-1	251	.944
8.	Alexandra Garcia, UConn	2010-11	20	9-8-3	598	.943
9.	Roxanne Douville, UVM	2013-14	19	12-5-1	531	.941
	Molly Schaus, BC	2010-11	20	13-4-3	444	.941
11.	Genevieve Lacasse, PC	2008-09	17	10-5-1	408	.940
	Melissa Haber, BU	2009-10	17	8-5-4	421	.940

Career Saves

Rk.	Name	Seasons	GP	W-L-T	Svs	SV%
1.	Roxanne Douville, UVM	2010-14	73	23-36-11	2143	.925
2.	Brittany Ott, ME	2009-13	189	22-43-9	2043	.915
3.	Genevieve Turgeon, ME	2005-09	77	17-46-12	2042	.902
4.	Genevieve Lacasse, PC	2008-12	75	42-24-8	1927	.933
5.	Molly Schaus, BC	2006-11	79	46-24-9	1810	.929
6.	Florence Schelling, NU	2008-12	63	29-22-11	1731	.940
7.	Kerrin Sperry, BU	2010-14	68	50-15-3	1685	.921
8.	Chloe Desjardins, BU	2011-15	104	55-28-8	1607	.921
9.	Elaine Chuli, UConn	2012-	47	9-31-6	1574	.911
10.	Corinne Boyles, BC	2009-14	68	46-14-6	1564	.927

Single Season Saves

Rk.	Name	Season	GP	W-L-T	Svs	SV%
1.	Marisa Hourihan, NU	2004-05	20	2-15-3	.921	815
2.	Genevieve Turgeon, ME	2008-09	21	2-15-4	.899	682
3.	Leah Sulyma, NU	2007-08	21	6-14-1	.913	675
4.	Genevieve Turgeon, ME	2007-08	19	3-13-3	.909	657
5.	Meghann Treacy, ME	2014-15	19	8-10-1	.929	643
6.	Chloe Desjardins, NU	2013-14	21	13-6-2	.934	618
6.	Alexandra Garcia, UConn	2010-11	20	9-8-3	.943	598
7.	Roxanne Douville, UVM	2012-13	18	5-9-4	.923	590
8.	Florence Schelling, NU	2011-12	21	15-3-3	.956	580
9.	Brittany Ott, Maine	2011-12	21	11-8-2	.926	579
10.	Chloe Desjardins, NU	2014-15	20	10-7-1	.923	573

Career Wins

Rk.	Name	Seasons	GP	Win%	W-L-T
1.	Melissa Bourdon, UNH	2003-07	64	.879	52-5-5
2.	Kerrin Sperry, BU	2010-14	68	.757	50-15-3
3.	Corinne Boyles, BC	2009-14	68	.778	46-14-6
	Molly Schaus, BC	2006-11	79	.639	46-24-9
5.	Genevieve Lacasse, PC	2008-12	75	.622	42-24-8
6.	Jana Bugden, PC	2003-07	61	.672	37-17-4
7.	Brittany Wilson, UConn	2005-09	62	.642	35-18-7
8.	Chloe Desjardins, NU	2011-15	59	.643	34-18-4
9.	Kayley Herman, UNH	2007-11	51	.725	33-10-8
10.	Florence Schelling, NU	2008-12	63	.556	29-22-11

Active Career GAA

Rk.	Name	Seasons	GP	W-L-T	GA	GAA
1.	Katie Burt, BC	2015-	17	16-0-1	10	0.61
2.	Jenn Gilligan, UNH	2014-	13	9-3-1	28	2.24
3.	Erin O'Neil, BU	2015-	12	9-4-1	26	2.34

Active Career SV%

Rk.	Name	Seasons	GP	W-L-T	Svs	SV%
1.	Chloe Desjardins, NU	2011-	39	24-11-3	1034	.920
2.	Elaine Chuli, UConn	2012-	34	6-25-1	1108	.910
3.	Jenn Gilligan, UNH	2011-	20	8-9-3	478	.907

Active Career Saves

Rk.	Name	Seasons	GP	W-L-T	Sv% Saves
1.	Katie Burt, BC	2015-	17	16-0-1	.965 278
2.	Annie Belanger, UConn	2015-	10	2-5-1	.921 313
3.	Meghann Treacy, ME	2012-	44	13-25-5	.917 1330

Active Career Wins

Rk.	Name	Seasons	GP	Win%	W-L-T
1.	Katie Burt, BC	2015-	17	.971	16-0-1
2.	Meghann Treacy, ME	2012-	44	.360	13-25-5
3.	Sarah Bryant, PC	2012-	36	.375	12-21-3





MISCELLANEOUS RECORDS

Records reflect only regular season games played within the conference schedule

Team Records

Best Win Pct.:	.976	UNH (20-0-1 in 2007-08)
Most Wins:	20	UNH (2007-08)
Fewest Losses:	0	UNH (2007-08)
Most Home Wins:	11	UNH (2005-06)
Most Road Wins:	10	UNH (2006-07) UNH (2007-08)
Winning Streak:	25	BC (2/15/14 - 2/21/15)
Unbeaten Streak:	40	UNH (11/17/06 to 10/15/08 (35-0-5))
Most OT Games:	7	Northeastern (2009-10) UConn (2014-15)
Most Ties:	6	UConn, NU (2009-10)
Most Goals Scored:		
season:	114	BC (2014-15)
game:	11	UNH (2/11/06 at NU)
both teams:	15	NU 8, Providence 7 (1/20/13) UNH 10, BC 2 (3/5/05) BU 7, UConn 5 (2/23/13)
Most Goals Per Game:	5.24	BC (2012-13)
Fewest Goals Allowed:	15	UNH (2002-03)
Lowest GAA:	0.71	UNH (2007-08)

Special Teams

Best Power Play:	32.7%	UNH (2005-06)
Best Penalty Kill:	97.8%	UNH (2007-08)

Most Power Play Goals:

season:	38	UNH (2009-10)
---------	----	---------------

Most Shorthanded Goals:

season:	9	Boston College (2006-07)
---------	---	--------------------------

Most Penalty Minutes:

season:	359	Providence (2005-06)
per game:	17.10	Providence (2005-06)

Fewest Penalty Minutes:

season:	94	UConn (2002-03)
per game:	6.27	UConn (2002-03)

Individual Scoring

Most Points:		
career:	133	Kelli Stack, Boston College (2006-2011)
season:	48	Alex Carpenter, BC (2012-13)
game:	6	Nicole Hekle, UNH (2/22/04 at UConn) Casey Pickett, NU (11/3/12 vs. UConn) Kendall Coyne, NU (11/3/12 vs. UConn)

Most Goals:

career:	71	Jenn Wakefield, BU/UNH (2007-2012)
season:	25	Alex Carpenter, BC (2012-2013)
game:	4	Casey Pickett, NU (11/3/12 vs. UConn)

Most Assists:

career:	73	Sam Faber, New Hampshire (2005-2009)
season:	30	Kelly Paton, New Hampshire (2009-2010)
game:	5	Nicole Hekle, UNH (2/22/04 at UConn) Kristen Thomas, UNH (2/6/04 vs. NU) Kendall Coyne, NU (11/2/12 vs. UConn)

Defenseman Scoring

Most Points:		
career:	59	Emily Pfalzer, Boston College (2011-15)
season:	28	Kelli Halcisak, Providence (2003-04) Kristin Gigliotti, Providence (2006-07) Kristen Thomas, UNH (2/6/04 vs. NU) Twice by Kelli Halcisak, Providence
game:	5	

Most Goals:

career:	21	Kristin Gigliotti, Providence (2003-07)
season:	13	Shannon Clement, UNH (2005-06)
game:	3	Twice by Shannon Clement, UNH

Most Assists:

career:	48	Emily Pfalzer, Boston College (2011-15)
season:	22	Martine Garland, UNH (2005-06)
game:	5	Kristen Thomas, UNH (2/6/04 vs. NU)

Freshman Scoring

Most Points:		
season:	37	Hayley Skarupa, BC (2012-13)
game:	6	Nicole Hekle, UNH (2/22/04 at UConn)

Most Goals:

season:	21	Allie Thunstrom, BC (2006-07) Several times Twice by Jaclyn Hawkins, UConn (04-05) and Jennifer Hitchcock, UNH (04-05) and Hayley Skarupa, BC (12-13)
game:	3	

Most Assists:

season:	22	Hayley Skarupa, BC (2012-13)
game:	5	Nicole Hekle, UNH (2/22/04 at UConn)



2015-16 WOMEN'S COMPOSITE SCHEDULE



*League game

Fri., September 25

Whitby Wolves at Merrimack (ex) – 7pm
Guelph at Boston College (ex) – 7pm

Sat., September 26

Northeastern at SLU – 2pm
Guelph at Boston Univ. (ex) – 3pm
Whitby Wolves at UConn (ex) – 2pm
Oakville at New Hampshire (ex) – 1pm

Sun., September 27

Northeastern at SLU – 12pm
Whitby Wolves at Providence (ex) – 1pm
McGill at Vermont (ex) – 2pm

Fri., October 2

UMD at Boston College – 7pm
UConn at Boston Univ.* – 7pm
Maine at New Hampshire* – 7pm
SCSU at Merrimack – 6pm
Bemidji State at Vermont – 4:30pm
Providence v. Wisconsin in San Jose – 10pm

Sat., October 3

UMD at Boston College – 3pm
Union at UConn – 7pm
SCSU at Merrimack – 2pm
Bemidji State at Vermont – 4pm
Providence v. WI in San Jose – 6pm
Toronto Leaside at Northeastern (ex) – 2pm

Sun., October 4

Boston Univ. at Maine* – 1pm

Fri., October 9

PSU at Boston Univ. – 7pm
Quinnipiac at Maine – 7pm
Clarkson at Vermont – 7pm
Merrimack at RMU – 7:05pm
Lindenwood at New Hampshire – 5pm
Syracuse at Northeastern – 2pm

Sat., October 10

PSU at Boston Univ. – 3pm
Quinnipiac at Maine – 2pm
Vermont at Clarkson – 3pm
Merrimack at RMU – 3:05pm
Syracuse at New Hampshire – 2pm
Lindenwood at Northeastern – 2pm

Sun., October 11

SLU at Boston College – 1pm

Mon., October 12

SLU at Boston College – 1pm

Thu., October 15

SLU at Vermont – 7pm

Fri., October 16

Clarkson at Boston Univ. – 7pm
Vermont at SLU – 7pm
Mercyhurst at Northeastern – 2pm

Sat., October 17

New Hampshire at Merrimack* – 3pm
Maine at Boston College* – 2pm
Clarkson at Boston Univ. – 3pm

Mercyhurst at Northeastern – 1pm
Syracuse at UConn – 2pm
Colgate at Providence – 2pm

Sun., October 18

Maine at Merrimack* – 2pm
New Hampshire at Boston College* – 2pm
Syracuse at Providence – 2pm
Colgate at UConn – 2pm

Fri., October 23

Boston College at Cornell – 3pm
Brown at Maine in Auburn, ME – 7pm
Colgate at Merrimack – 2pm
New Hampshire at Clarkson – 3pm

Sat., October 24

Boston College at Cornell – 3pm
Vermont at Providence* – 1pm
Boston Univ. at Northeastern* – 2pm
UConn at PSU – 7pm
Brown at Maine – 7pm
Colgate at Merrimack – 2pm
New Hampshire at Clarkson – 3pm

Sun., October 25

Vermont at Boston Univ.* – 3pm
Providence at Northeastern* – 2pm
UConn at Penn State – 2pm

Fri., October 30

Northeastern at Merrimack* – 2:00pm
New Hampshire at Vermont* – 7pm
Providence at Maine* – 7pm
UConn at Boston College* – 2pm

Sat., October 31

Boston College at UConn – 2pm

Sun., November 1

Maine at Vermont* – 2pm
Boston Univ. at New Hampshire* – 2pm

Tue., November 3

Yale at Boston Univ. – 7pm

Fri., November 6

Northeastern at Maine* – 7pm

Sat., November 7

New Hampshire at Providence* – 1pm
Merrimack at UConn* – 2pm
Boston College at Boston Univ.* – 3pm

Sun., November 8

New Hampshire at UConn* – 2pm

Tue., November 10

Boston Univ. at Boston College* – 7pm
Maine at Dartmouth – 7pm

Fri., November 13

Northeastern at Merrimack* – 7pm
New Hampshire at Boston College* – 2pm
UConn at Clarkson – 7pm
Providence at Vermont* – 2pm

Sat., November 14

Maine at Boston Univ.* – 3pm
Providence at Vermont* – 4pm
Merrimack at Northeastern* – 2pm
UConn at Clarkson – 3pm
Boston College at New Hampshire* – 3pm

Sun., November 15

Maine at Boston Univ.* – 3pm

Wed., November 18

Maine at Dartmouth – 7pm
New Hampshire at Harvard – 7pm

Fri., November 20

Northeastern at Boston College* – 7pm
Boston Univ. at Merrimack* – 7pm
Vermont at UConn* – 7pm

Sat., November 21

Providence at New Hampshire* – 2pm
Merrimack at Boston Univ.* – 3pm
Vermont at Northeastern* – 2:30pm

Sun., November 22

Providence at New Hampshire* – 2pm
UConn at Maine* – 2pm

Tue., November 24

Northeastern at Harvard – 7pm

Wed., November 25

Providence at Boston College* – 4pm

Fri., November 27

Maine at RMU – 7:05pm
New Hampshire at RPI – 7pm
Quinnipiac vs UConn - Nutmeg at Yale
Merrimack vs. Yale – Nutmeg Classic – 7pm

Sat., November 28

Boston College at Northeastern* – 2pm
OSU at Vermont (Windjammer Classic) – 4pm
Cornell vs. Boston Univ. (Windjammer Classic) – 1pm
New Hampshire at RPI – 4pm
Brown at Providence – 1pm
Maine at RMU – 3pm
Merrimack vs. UConn/Quinnipiac (Nutmeg Classic)
UConn vs. Merrimack/Yale (Nutmeg Classic)

Sun., November 29

Cornell at Vermont (Windjammer Classic) – 4pm
OSU vs Boston Univ. (Windjammer Classic) – 1pm

Tue., December 1

Union at Providence – 7pm

Fri., December 4

Merrimack at New Hampshire* – 7pm
Northeastern at Vermont* – 7pm

Sat., December 5

Boston College at Maine* – 2pm
Northeastern at Vermont* – 4pm
Boston Univ. at UConn* – 3pm
New Hampshire at Merrimack* – 4pm





2015-16 WOMEN'S COMPOSITE SCHEDULE

*League game

2015-16 SCHEDULE

Sun., December 6

Boston College at Maine* – 2pm
UConn at Boston Univ.* – 3pm

Tue., December 8

Dartmouth at New Hampshire – 7pm

Thu., December 10

Boston College at Syracuse – 4pm

Fri., December 11

Merrimack at Providence* – 7pm
Union at Maine – 7pm
New Hampshire at Quinnipiac – 7pm

Sat., December 12

Union at Maine – 2pm
Vermont at Dartmouth – 4pm

Sun., December 13

Yale at New Hampshire – 2pm

Sat., January 2

Providence at RMU – 7:05pm
Vermont at Union – 4pm
Dartmouth at Northeastern – 2pm

Sun., January 3

Providence at RMU – 2:05pm

Mon., January 4

Merrimack at Vermont* – 7pm

Tue., January 5

UConn at Northeastern* – 7pm

Wed., January 6

Merrimack at SLU – 11am

Fri., January 8

RIT at Providence – 2pm

Sat., January 9

Vermont at Maine* – 2pm
Boston College at Boston Univ.* – 3pm
UConn at Merrimack* – 2pm
New Hampshire at Northeastern* – 2pm
RIT at Providence – 1pm

Sun., January 10

Vermont at Maine* – 2pm
Merrimack at UConn* – 2pm
Northeastern at New Hampshire* – 2pm

Wed., January 13

Northeastern at Providence* – 7pm

Fri., January 15

Boston College at Merrimack* – 7pm

Sat., January 16

Boston Univ. at Vermont* – 2pm
Maine at Northeastern* – 2pm
Merrimack at Boston College* – 3pm
UConn at Providence* – 2pm

Sun., January 17

Boston Univ. at Vermont* – 2pm
Maine at Northeastern* – 2pm
Providence at UConn* – 2pm

Tue., January 19

Brown at Merrimack – 6pm
Boston College at Harvard – 7pm

Wed., January 20

Boston Univ. at Quinnipiac – 11am

Fri., January 22

UConn at Northeastern* – 7pm
Vermont at Boston College* – 7pm

Sat., January 23

Vermont at Boston College* – 2pm
New Hampshire at Maine* – 2pm
Northeastern at UConn* – 3pm
Providence at Boston Univ.* – 3pm (at Agganis Arena)

Sun., January 24

New Hampshire at Maine – 2pm
Boston Univ. at Providence – 2pm

Mon., January 25

Princeton at UConn – 7pm

Tue., January 26

Boston College at Merrimack* – 7pm

Fri., January 29

UConn at Vermont* – 7pm
New Hampshire at Northeastern* – 7pm

Sat., January 30

UConn at Vermont* – 4pm
Maine at Providence* – 1pm
Merrimack at Boston Univ.* – 3pm

Sun., January 31

Maine at Providence* – 2pm

Tue., February 2

Beanpot at Boston Univ.
Boston College vs. Harvard – 4:30pm
Boston Univ. vs. Northeastern – 8pm

Fri., February 5

Vermont at New Hampshire* – 7pm

Sat., February 6

Merrimack at Maine – 2pm
Vermont at New Hampshire* – 4pm
Northeastern at Providence* – 2pm
Boston College at UConn* – 3pm

Sun., February 7

Providence at UConn* – 3pm
Merrimack at Maine* – 2pm

Tue., February 9

Beanpot Games

Fri., February 12

Northeastern at Boston College* – 2pm
Maine at UConn* – 7pm

Sat., February 13

Maine at UConn* – 2pm
New Hampshire at Boston Univ.* – 3pm
Providence at Merrimack* – 2pm

Sun., February 14

Boston Univ. at New Hampshire* – 2pm
Merrimack at Providence* – 2pm
Boston College at Vermont* – 2pm

Fri., February 19

Vermont at Merrimack* – 7pm
Northeastern at Boston Univ.* – 7pm
Providence at Boston College* – 4 pm

Sat., February 20

Vermont at Merrimack* – 4pm
Boston Univ. at Northeastern* – 2pm
Boston College at Providence* – 1pm
UConn at New Hampshire* – 2pm

Sun., February 21

UConn at New Hampshire* – 2pm

February 26-29

WHEA Quarters

Sat., March 5

WHEA Semifinals

Sun., March 6

WHEA Final

Sat., March 12

NCAA Quarterfinals

Fri., March 18

NCAA Frozen Four

Sun., March 20

NCAA Championship

