



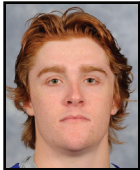
MEN'S WEEKLY RELEASE

Pete Souris
Assistant Commissioner
for Public Relations
Hockey East Association
 591 North Ave – #2
 Wakefield, MA 01880
 Office: (781) 245-2122
 Cell: (603) 512-1166
 psouris@HockeyEastOnline.com

FOR IMMEDIATE RELEASE: MONDAY, JANUARY 14, 2013

WEEKLY RELEASE #15

UMASS-LOWELL, PROVIDENCE EARN FOUR POINTS; NO. 2 BC, NO. 4 UNH SPLIT ~ No. 8 Boston U. gets road win at Merrimack; Merrimack blanks Maine ~



ATHLETIC REPUBLIC PLAYER OF THE WEEK

#29 SCOTT WILSON, UMASS-LOWELL
 (Sophomore Forward; Oakville, Ont.)



Wilson compiled five points (3g,2a) in the 4-2 and 6-3 road victories against Vermont last weekend. In Friday's victory, Wilson scored two goals in the first period and followed with one goal and two assists in Saturday's win at Gutterson Fieldhouse.

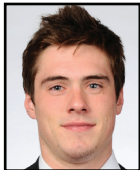


PRO AMBITIONS CO-ROOKIE OF THE WEEK

#32 JON GILLIES, PROVIDENCE COLLEGE
 (Goaltender; Portland, Maine)



Gillies made 70 saves (.946 save%) in two wins in a home-and-home series with UMass, which included a career-high 44 save effort on Saturday night at Schneider Arena for his third shutout of the season.



PRO AMBITIONS CO-ROOKIE OF THE WEEK

#31 SEAN MAGUIRE, BOSTON UNIVERSITY (Goaltender; Powell River, B.C.)

Maguire stopped 37 of the 38 shots (.974 save%) he faced in the Terriers' 4-1 road win over Merrimack on Friday at Lawler Arena.



HOCKEY EAST DEFENSIVE PLAYER OF THE WEEK

#35 PARKER MILNER, BOSTON COLLEGE (Senior Goaltender; Pittsburgh, Pa.)

Stopped 68-of-72 New Hampshire shots (.944 save %) in the two-game split with the Wildcats over the weekend, which included 31 saves Friday in the 5-2 win at Conte Forum and 37 stops in the 2-1 road loss on Saturday.



HOCKEY EAST TEAM OF THE WEEK

UMASS-LOWELL RIVER HAWKS

The River Hawks swept Vermont in a pair of games on the road at Gutterson Fieldhouse for their seventh straight victory. UMass-Lowell scored 10 goals in the weekend and went a perfect 9-for-9 on the penalty kill in the two-game series.

2012-2013 HEA STANDINGS

| Rk. | Team | GP | W | L | T | Pts | Overall | Conf. Off. | Conf. Def. |
|-----|-------------------|----|----|---|---|-----|---------|------------|------------|
| 1. | Boston College | 14 | 10 | 3 | 1 | 21 | 13-4-2 | 3.36 (47) | 2.29 (32) |
| 2. | New Hampshire | 13 | 9 | 3 | 1 | 19 | 14-4-2 | 3.00 (39) | 1.54 (20) |
| 3. | Boston University | 13 | 9 | 4 | 0 | 18 | 12-7-0 | 3.00 (39) | 2.31 (30) |
| 4. | Providence | 13 | 7 | 4 | 2 | 16 | 9-8-3 | 2.69 (35) | 2.38 (31) |
| 5. | Merrimack | 12 | 6 | 5 | 1 | 13 | 8-9-4 | 3.17 (38) | 2.42 (29) |
| 6. | UMass-Lowell | 12 | 5 | 6 | 1 | 11 | 11-7-1 | 2.75 (33) | 2.75 (33) |
| 7. | Vermont | 15 | 3 | 8 | 4 | 10 | 6-11-4 | 2.00 (30) | 3.20 (48) |
| 8. | Massachusetts | 13 | 4 | 8 | 1 | 9 | 7-11-2 | 2.54 (33) | 3.00 (39) |
| 9. | Northeastern | 13 | 3 | 8 | 2 | 8 | 6-10-2 | 1.77 (23) | 2.85 (37) |
| 10. | Maine | 12 | 1 | 8 | 3 | 5 | 5-13-3 | 1.25 (15) | 2.75 (33) |

RECENT RESULTS

Wednesday, January 9
 Harvard 6 at No. 8 Boston University 5 (OT)

Friday, January 11
 at No. 2 Boston College 5, No. 4 New Hampshire 2 *
 Providence 5 at Massachusetts 4 *
 No. 8 Boston University 4 at Merrimack 1 *
 UMass-Lowell 4 at Vermont 2 *
 Maine 1 at Northeastern 1 (OT) *

Saturday, January 12
 at Merrimack 6, Maine 0 *
 at No. 4 New Hampshire 2, No. 2 Boston College 1 *
 at Providence 2, Massachusetts 0 *
 UMass-Lowell 6 at Vermont 3 *

UPCOMING GAMES

Thursday, January 17
 Providence at No. 15 UMass-Lowell * (NBCSN)

Friday, January 18
 Massachusetts at No. 2 Boston College *
 Northeastern at No. 9 Boston U. * (NESN)
 Merrimack at Maine *

Saturday, January 19
 No. 15 UMass-Lowell at No. 9 Boston U. *
 Merrimack at Maine * (WABI-TV)
 No. 2 Boston College at Northeastern (WBIN-TV)*
 Providence at No. 3 New Hampshire *
 Vermont vs. Penn State
 (7pm, Wells Fargo Ctr., Phila, Pa., CSN-Philly)

ALL TIMES EST, 7PM, unless noted
 * denotes conference game

The 29th ANNUAL HOCKEY EAST CHAMPIONSHIP TOURNAMENT
MARCH 22-23, 2013



Tickets are ONSALE now!!!!
at the TD Garden Box Office,
at www.ticketmaster.com or
by calling 800-745-3000

HOCKEY EAST WEEKLY TOP PERFORMERS

Derek Army, PC (Jr., F, North Kingstown, R.I.) Recorded three points (2g,1a) in two games vs. UMass, which included two goals in the win on Friday.
Kyle Bigos, MC (Sr., D, Upland, CA) Notched three points (1g,2a) on the weekend, scoring a goal against BU and picking up two assists against Maine.
Connor Brickley, UVM (Jr., F, Everett, Mass.) Had two assists on the weekend in first action since Nov. 16
Mike Collins, MC (Jr., F, Boston, Mass.) Matched a season-high with a three-point game against Maine, notching a goal and two assists and a +2 rating.
Dan Correale, UNH (Fr., F, Prince George, B.C.) Correale assisted on UNH's first goal in a 2-1 win over BC on Saturday night.
Stefan Demopoulos, PC (So., F, La Mesa, Calif.) 2GP, 2G-0A-2Pts. Scored the shorthanded, game-winning goal at UMass on Friday night.
Christian Folin, UML (Fr., D, Gothenberg, Sweden) Assisted on three of UMass Lowell's four goals in UMass Lowell's 4-2 win at Vermont Friday.
Johnny Gaudreau, BC, So., F, Carneys Point, N.J.) Tallied three points, one goal and two primary assists, in BC's 5-2 home win over UNH.
Kevin Goumas, UNH (Jr., F, Long Beach, N.Y.) Had a goal and an assist over the weekend against Boston College. He had six shots on net.
John Henrion, UNH (Sr., F, Holden, Mass.) Posted a goal and an assist in the weekend split with Boston College.
Cason Hohmann, BU (So., F, Arlington, Texas) Recorded a goal and an assist in BU's 4-1 victory at Merrimack on Friday.
Ross Mauermann, PC (So., F, Janesville, Wis.) Scored a goal in each game over the weekend vs. UMass, including the game winner on Saturday night.
Ryan McGrath, UML (Fr., F, O'Fallon, Mo.) Dished out three assists in UMass Lowell's 4-2 and 6-3 victories over Vermont, including two in the 6-3 win.
Wade Megan, BU (Sr., F, Canton, N.Y.) Registered three points (2g,1a) and a plus-3 rating over BU's two games
Sam Marotta, MC (Jr., G, Bridgewater, Mass.) Picked up a 30-save shutout against Maine, his first of the season and second of his career.
Pat Mullane, BC (Sr., F, Wallingford, Conn.) Scored twice, his third two-goal effort this season, in Friday's 5-2 home win over UNH.
Matt Nieto, BU (Jr., F, Long Beach, Calif.) Tallied four points (2g,2a) on the week, including a three-point night (1g,2a) against Harvard.
Danny O'Regan, BU (Fr., F, Needham, Mass.) Tallied two goals and an assist vs. Harvard on Wednesday before adding an assist in Friday's win at MC.
Joe Pendenza, UML (Jr., F, Wilmington, Mass.) Scored one goal and set up two others in UMass Lowell's 4-2 and 6-3 victories at Vermont.
Chris Rawlings, NU (Sr., G, North Delta, B.C.) Stopped 42 shots to help Northeastern to a 1-1 draw against Maine
Kyle Reynolds, UVM (So., F, Sylvan Lake, Alta.) Had a goal and an assist vs. No. 20 UMass Lowell this weekend.
Chad Ruhwedel, UML (Jr., D, San Diego, Calif.) Registered one goal and two assists in UMass Lowell's 4-2 and 6-3 victories at Vermont.
Matt White, UVM (Jr., F, McMurray, Pa.) Posted two assists on the weekend vs. No. 20 UMass Lowell

2012-2013

HOCKEY EAST SCORING LEADERS

PRESENTED BY



| Rk. | Name (School) | GP | PPG | G | A | P |
|-----|----------------------|----|------|---|----|----|
| 1. | Mike Collins (MC) | 12 | 1.58 | 6 | 13 | 19 |
| | Johnny Gaudreau (BC) | 14 | 1.36 | 8 | 11 | 19 |
| 2. | Kevin Goumas (UNH) | 13 | 1.31 | 6 | 11 | 17 |
| 3. | Cason Hohmann (BU) | 13 | 1.23 | 5 | 11 | 16 |
| | Pat Mullane (BC) | 14 | 1.14 | 6 | 10 | 16 |
| 6. | Wade Megan (BU) | 13 | 1.15 | 8 | 7 | 15 |
| | Steven Whitney (BC) | 14 | 1.07 | 6 | 9 | 15 |
| 8. | Scott Wilson (UML) | 12 | 1.17 | 5 | 9 | 14 |
| | Bill Arnold (BC) | 14 | 1.00 | 7 | 7 | 14 |
| | Kevin Hayes (BC) | 14 | 1.00 | 6 | 8 | 14 |



ATHLETIC REPUBLIC

ARMY ROTC THREE STARS AWARD

At the conclusion of every Hockey East game, the "Army ROTC Three Stars of The Game" are selected by the members of the media. Here are the 2012-2013 season leaders to date:

| Rk. | Name, School | Cl. | Pos. |
|-----|---------------------|-----|------|
| 1. | Casey DeSmith, UNH | So. | G |
| | John Henrion, UNH | Sr. | F |
| 3. | Johnny Gaudreau, BC | So. | F |
| | Kevin Hayes, BC | Jr. | F |
| | Kevin Roy, NU | Fr. | F |
| 6. | Wade Megan, BU | Sr. | F |
| | Matt O'Connor, BU | Fr. | G |
| 8. | Brody Hoffman, UVM | Fr. | G |
| | Chris Rawlings, NU | Sr. | G |



CAREER FIRSTS/MILESTONES/WHO'S HOT?

DEREK ARMY, PC (NORTH KINGSTOWN, R.I.)
HAS 12 POINTS (7G,5A) IN HIS LAST 11 GAMES

BROOKS DYROFF, BC (BOULDER, COL.)
SCORED HIS FIRST COLLEGIATE GOAL AT UNH SATURDAY

KEVIN GOUMAS, UNH (LONG BEACH, N.Y.)
HAS A 4-GAME POINT STREAK (1G,3A) AND 14 OF THE LAST 15 GAMES (8G,15A)

CONNOR HELLEBUYCK, UML (COMMERCE, MICH.)
IS 5-0-0 (0.94 GAA AND .963 SAVE%) AND TWO SHUTOUTS IN HIS LAST SIX APPEARANCES

SEAN MAGUIRE, BU (POWELL RIVER, B.C.)
HAS WON HIS LAST FIVE STARTS, POSTING A 0.99 GAA AND A .966 SAVE PERCENTAGE DURING THE SPAN

CHRIS MCCARTHY, UVM (COLLEGEVILLE, PA.)
AVERAGING A POINT PER GAME OVER LAST 11 CONTESTS

GARRETT NOONAN, BU (NORFOLK, MASS.)
HAS RECORDED A POINT IN EIGHT OF BU'S LAST NINE GAMES

BILL NORMAN, MAINE (STOCKHOLM, SWEDEN)
SCORED HIS FIRST CAREER GOAL ON FRIDAY AT NORTHEASTERN

MATT WILLOWS, UNH (CONGERS, N.Y.)
SCORED HIS FIRST COLLEGIATE GOAL ON SATURDAY VS. BC

KYLE REYNOLDS, UVM (SYLVAN LAKE, ALBERTA)
SKATED IN 50TH CAREER GAME ON FRIDAY NIGHT

CHAD RUHWEDDEL, UML (SAN DIEGO, CALIF.)
HAS 2-3-5 IN HIS LAST THREE GAMES

UMASS LOWELL PENALTY KILL
HAS KILLED OFF 32 STRAIGHT PENALTIES

UNH'S LINE OF JAY CAMPER, DAN CORREALE AND MATT WILLOWS
HAVE 12 POINTS (3G,9A) IN FOUR GAMES

RILEY WETMORE, UML (SWANTON, VT.)
PLAYED IN HIS 130TH CONSECUTIVE GAME AT UVM SATURDAY

CAYLEN WALLS, UVM (LYALTA, ALTA.)
SCORED FIRST CAREER GOAL VS. NO. 20 UML SATURDAY

SCOTT WILSON, UML (OAKVILLE, ONT.)
HAS 6-11-17 IN HIS LAST 11 GAMES

TEAM NOTES

BOSTON COLLEGE: BC played before a sellout crowd of 7,884 fans at Kelley Rink on Friday, marking the fourth sellout (in nine games) this season; the Eagles are averaging a conference-high 6,867 fans per home game. With Friday's 5-2 win over New Hampshire at Kelley Rink, the Eagles improved to 8-0-1 at home this season and 16-0-2 at home since last January...Goalie Parker Milner earned his second career assist on Friday with a breakout pass to Destry Straight on Johnny Gaudreau's decisive goal on a partial breakaway. He last tallied an assist in a win over Massachusetts on March 12, 2012...BC's senior class is now 9-4-2 in 15 meetings against the Wildcats in their four years...After just three penalties were called between the teams on Friday at Kelley Rink, a total of 11 penalties – eight against Boston College and three against New Hampshire were called on Saturday at the Whittemore Center...Boston College was without its head coach Jerry York, who missed both New Hampshire games while recovering from eye surgery.

BOSTON UNIVERSITY: Sophomore Cason Hohmann leads the nation in plus-minus at plus-20...Freshman Sean Maguire ranks seventh nationally in save percentage (.938) and ninth in GAA (1.83) while both marks are tops amongst Hockey East goalies...Both of BU's freshman goaltenders have posted five-game win streaks this season...Until Wednesday's overtime setback against Harvard, BU this season hadn't lost to an unranked opponent, lost a one-goal game or lost when it led after two periods...It also marked the first time all season that BU had a game go into overtime...The Terriers last three meetings with Merrimack have taken place at Lawler Arena and BU has won all three, allowing just one goal each time... BU's last 31 goals have been scored by 15 different players and during one stretch, the team had 14 goals scored by 13 players...Friday's game versus Northeastern on NESN will feature Hockey East's top two rookie scorers in the Huskies' Kevin Roy (9-11-20) and BU's Danny O'Regan (7-8-15)...Three former Terriers (Chris Bourque, Jay Pandolfo, David Warsofsky) are on the Boston Bruins' preseason camp roster.

MAINE: Maine skated to a 1-1 draw with Northeastern on Friday night... Rookie Bill Norman scored Maine's lone goal in the game. It was the first career goal for Norman. He becomes the eighth Black Bears to notch his first career goal this season...Maine had 43 shots on goal on Friday night... It was the fourth time this season that Maine has notched 40 or more shots in a game...Maine had tallied four power play goals in its last three games before seeing that streak come to an end on Friday at Northeastern...Maine's freshman class has scored 35.6 percent of the team's total offense...In a rare scheduling oddity, Maine plays Merrimack three times in a row...The two teams met on Saturday night at Lawler Arena and now Merrimack comes to Alford Arena for a pair of games this Friday and Saturday.

MASSACHUSETTS: Junior Branden Gracel improved his Hockey East-leading faceoff percentage to 62.4% (231 of 370) after winning 30 of 45 draws (66.7%) he took over the weekend...Senior Darren Rowe had a three-point game on Friday night vs. Providence for a new career high on a goal and two assists...Junior Patrick Kiley scored his first goal of the season in Friday's meeting with the Friars...Prior to UMass being shut out on Saturday, junior Conor Allen tallied a goal on Friday night vs. Providence to extend his scoring streak to six straight games, a career best and the longest for any Minuteman this season.

UMASS-LOWELL: UMass Lowell won its sixth and seventh straight games with the 4-2 and 6-3 victories at Vermont last weekend and is currently riding its longest winning streak since the 2001-02 season when the River Hawks won nine successive games...Saturday's 6-3 win over the Catamounts marked the first time in seven games UMass Lowell allowed more than two goals...The River Hawks killed off nine power plays in the two games against Vermont, extending its penalty kill streak to 32 straight and 38 of the last 39. The last time UMass Lowell conceded a power play goal was on Nov. 30 in a 5-2 loss at New Hampshire...UMass Lowell improved to 7-3 away from home with the weekend sweep at Vermont...Sophomore F Scott Wilson has 6-11-17 in his last 11 games, including 4-2-6 in his last three games...The River Hawks are 17-14-6 all-time against Vermont and is 6-4-4 at the Gutterson Fieldhouse...Senior Riley Wetmore played in his 129th and 130th games at Vermont last weekend. He has never missed a game for UMass Lowell.

MERRIMACK: Back at Lawler Arena for the first time in a month, Merrimack lost to #8 BU 4-1 Friday before defeating Maine 6-0 Saturday in front of two sellout crowds despite students being on break...Merrimack remains in fifth place in Hockey East, three points behind Providence for fourth with a game-in-hand...Eleven different players notched points in the win over Maine, as Sam Marotta picked up the first shutout of the season. Marotta has two career shutouts, with Merrimack winning 6-0 in each game...The Warriors are 5-0-1 in the last six games in North Andover vs. the Black Bears...In a rematch of the 2011 and 2012 Hockey East Quarterfinals, Saturday's meeting with Maine marked the first of a three-game set in the next eight days...Merrimack's senior class is two wins away of becoming the most successful class in its Division I history, passing last year's class...Kyle Bigos became Hockey East's all-time penalty minute leader and has 418 career.

NEW HAMPSHIRE: UNH split its much-anticipated matchup with second-ranked Boston College. After falling 5-2 in Chestnut Hill on Friday, the Wildcats bounced back with a 2-1 win on Saturday night at the Whitt...The Wildcats snapped a six-game losing streak against the Eagles and won at home against BC for the first time in almost four years...On Friday night, Jay Camper and Kevin Goumas scored bookend goals with the Eagles scoring five times in between those tallies...On Saturday, UNH used nine minutes of power play time in the second period, including two minutes of 5-on-3, to take momentum and outshoot the BC 21-3 in the frame. They would finally breakthrough with an even-strength goal in the final minute of the period. Matt Willows scored his first collegiate goal...John Henrion scored the game-winning goal on Saturday with just under five minutes to play. He had a goal and assist over the weekend including 11 shots in two games...The Wildcats picked up their 14th win of the season on Saturday, the team had just 15 wins all of last season.

NORTHEASTERN: Senior netminder Chris Rawlings surpassed Brad Thiessen (2006-09) for the second most saves all-time at Northeastern. Heading into Friday's game vs. Maine, Rawlings trailed Thiessen's mark of 3,166. With the 42 saves, Rawlings is alone in second place with 3,203 career stops. Rawlings also tied Thiessen for most games played in net with 111 career appearances and trails Keni Gibson's (2001-05) mark of 115 games played by just four showings...Mike McMurtry pieced together his first career point streak with assists in his last two consecutive outings. Northeastern and Maine are now 5-4-17 in overtime contests. The last time both clubs tied was on Jan. 22, 2011 (3-3) at Matthews Arena. Roy has now scored 20 points at Northeastern, marking the seventh-consecutive season an incoming Husky has scored 20 points in a season, starting in 2006-07 with Chad Costello (11-11-22).

PROVIDENCE COLLEGE: With a weekend sweep, the Friars won the season series versus the Minutemen for the third consecutive season (2-1-0 in 2012-13; 2-0-1 in 2011-12; 1-0-2 in 2010-11)...Freshman goalie Jon Gillies made 44 saves in PC's 2-0 win on Saturday night, the most in a game since Alex Beaudry made 47 saves on Oct. 31, 2009 in a 2-1 Friar win in Amherst. It was Gillies' third shutout of the season and he became the first freshman in Friar history with three shutouts...The Friars are now 6-0-1 when leading after one period, 8-1-1 when scoring first and 4-0-0 when scoring five or more goals...Ross Mauermann has five points in his last five games played (2-3-5)...Myles Harvey also had an assist in both games, running his team-leading assist total to 10 (matching his season high mark of 10 set last season)...The Friars are the only team in Hockey East not to give up more than four goals in a game this season.

VERMONT: Vermont closed out a five-game homestand this weekend against No. 20 UMass Lowell...UVM had a four-game home unbeaten streak against the River Hawks snapped on Friday night. It was Lowell's first win at Gutterson Fieldhouse since the 2009 Hockey East Quarterfinals...Sophomore Colin Markison (Oct. 12) and junior Connor Brickley (Nov. 16) each returned from lengthy absences due to injury on Friday...Junior captain H.T. Lenz played in his 90th career game for the Catamounts over the weekend, while sophomores Michael Paliotta and Kyle Reynolds each skated in their 50th contest...Freshman defenseman Caylen Walls netted his first career goal in the third period of Saturday's game against the River Hawks...From the start of the second period on Friday to the end of the first period on Saturday, UVM held UMass Lowell to 13 total shots on goal...That stretch included a season-low two shots allowed in the second period on Friday.

HOCKEY EAST WEEKLY AWARDS

ATHLETIC REPUBLIC PLAYER OF THE WEEK

| Week | Player (School) |
|---------|---|
| Oct. 8 | Josh Myers (Merrimack) |
| Oct. 15 | Dalton Speelman (New Hampshire) |
| Oct. 22 | Johnny Gaudreau (Boston College) |
| Oct. 29 | Mike Collins (Merrimack) Parker Milner (Boston College) |
| Nov. 5 | Jordan Heywood (Merrimack) |
| Nov. 12 | Johnny Gaudreau (Boston College) |
| Nov. 19 | Derek Army (Providence College) Riley Wetmore (UMass-Lowell) |
| Nov. 26 | Kevin Goumas (New Hampshire) |
| Dec. 3 | Grayson Downing (New Hampshire) Evan Rodrigues (Boston University) |
| Dec. 10 | Matt O'Connor (Boston University) |
| Dec. 17 | Kyle Reynolds (Vermont) |
| Dec. 24 | Chris McCarthy (Vermont) Tim Schaller (Providence College) |
| Jan. 2 | Cody Ferriero (Northeastern) Branden Gracel (Massachusetts) |
| Jan. 7 | Cason Hohmann (Boston University) |
| Jan. 14 | Scott Wilson (UMass-Lowell) |

PRO AMBITIONS ROOKIE OF THE WEEK

| Week | Player (School) |
|---------|---|
| Oct. 8 | Steven Swavelly (Maine) |
| Oct. 15 | Kevin Roy (Northeastern) |
| Oct. 22 | Jon Gillies (Providence College) |
| Oct. 29 | Jon Gillies (Providence College) |
| Nov. 5 | Brody Hoffman (Vermont) Matt O'Connor (Boston University) |
| Nov. 12 | Matt Grzelcyk (Boston University) |
| Nov. 19 | John Gustafsson (Merrimack) |
| Nov. 26 | Sean Maguire (Boston University) |
| Dec. 3 | K.J. Tiefenwerth (Massachusetts) |
| Dec. 10 | Michael Matheson (Boston College) Nick Saracino (Providence College) |
| Dec. 17 | Brody Hoffman (Vermont) Justin Hussar (Merrimack) |
| Dec. 24 | Jonathan Turk (Vermont) |
| Jan. 2 | Matt Morris (Maine) Kevin Roy (Northeastern) |
| Jan. 7 | Connor Hellebuyck (UMass-Lowell) |
| Jan. 14 | Jon Gillies (Providence College) Sean Maguire (Boston University) |

HOCKEY EAST DEFENSIVE PLAYER OF THE WEEK

| Week | Player (School) |
|---------|---|
| Oct. 8 | Sam Marotta (Merrimack) |
| Oct. 15 | Jon Gillies (Providence College) Brody Hoffman (Vermont) |
| Oct. 22 | Doug Carr (UMass-Lowell) |
| Oct. 29 | Casey DeSmith (New Hampshire) Casey DeSmith (New Hampshire) Bryan Mountain (Northeastern) |
| Nov. 5 | Casey DeSmith (New Hampshire) |
| Nov. 12 | Parker Milner (Boston College) |
| Nov. 19 | Casey DeSmith (New Hampshire) |
| Nov. 26 | Jon Gillies (Providence College) |
| Dec. 3 | Brody Hoffman (Vermont) |
| Dec. 10 | Connor Hellebuyck (UMass-Lowell) |
| Dec. 17 | Connor Hellebuyck (UMass-Lowell) |
| Dec. 24 | None selected |
| Jan. 2 | Brody Hoffman (Vermont) |
| Jan. 7 | Sam Marotta (Merrimack) |
| Jan. 14 | Parker Milner (Boston College) |

HOCKEY EAST TEAM OF THE WEEK

| Week | School |
|---------|----------------------------|
| Oct. 8 | Merrimack College Warriors |
| Oct. 15 | Northeastern Huskies |
| Oct. 22 | Boston College Eagles |
| Oct. 29 | Boston College Eagles |
| Nov. 5 | Merrimack College Warriors |
| Nov. 12 | Boston College Eagles |
| Nov. 19 | New Hampshire Wildcats |
| Nov. 26 | New Hampshire Wildcats |
| Dec. 3 | New Hampshire Wildcats |
| Dec. 10 | Boston University Terriers |
| Dec. 17 | UMass-Lowell River Hawks |
| Dec. 24 | None selected |
| Jan. 2 | Massachusetts Minutemen |
| Jan. 7 | UMass-Lowell River Hawks |
| Jan. 14 | UMass-Lowell River Hawks |

DIVISION I MEN'S NATIONAL POLLS

USA Today/USA Hockey Magazine Men's College Hockey Poll

| Rk. | School, Pts. (FPV) | LR | Record |
|-----|-------------------------------|-----------|---------------|
| 1. | Minnesota, 507 (31) | 1 | 16-3-3 |
| 2. | Boston College, 457 | 2 | 13-4-2 |
| 3. | New Hampshire, 430 | 4 | 14-4-2 |
| 4. | Notre Dame, 398 | 3 | 15-6-0 |
| 5. | Quinnipiac, 397 (3) | 5 | 17-3-3 |
| 6. | North Dakota, 310 | 7 | 13-6-3 |
| 7. | Denver, 285 | 9 | 13-6-4 |
| 8. | Miami, 263 | 6 | 12-5-5 |
| 9. | Boston University, 258 | 8 | 12-7-0 |
| 10. | Western Michigan, 225 | 10 | 13-5-4 |
| 11. | Dartmouth, 148 | 12 | 9-5-2 |
| 12. | Yale, 145 | 14 | 9-4-3 |
| 13. | Nebraska-Omaha, 71 | 13 | 13-9-2 |
| 14. | Minnesota State, 47 | 11 | 14-8-2 |
| 15. | UMass-Lowell, 38 | NR | 11-7-1 |

Others receiving votes: Niagara, 32; Union, 27; Cornell, 25; Colgate, 12; St. Cloud State, 3; Ferris State, 1; Lake Superior State, 1.

USCHO.com Div. I Men's Poll

| Rk. | Team (FPV) | Record | Pts. | LW |
|-----|--------------------------|---------------|------------|-----------|
| 1. | Minnesota (47) | 16-3-3 | 992 | 1 |
| 2. | Boston College | 13-4-2 | 924 | 3 |
| 3. | New Hampshire (1) | 14-4-2 | 875 | 4 |
| 4. | Quinnipiac (2) | 17-3-3 | 847 | 5 |
| 5. | Notre Dame | 15-6-0 | 829 | 2 |
| 6. | North Dakota | 13-6-3 | 714 | 7 |
| 7. | Denver | 13-6-4 | 667 | 9 |
| 8. | Miami | 12-5-5 | 623 | 6 |
| 9. | Boston University | 12-7-0 | 617 | 8 |
| 10. | Western Michigan | 13-5-4 | 598 | 10 |
| 11. | Dartmouth | 9-5-2 | 477 | 12 |
| 12. | Yale | 9-4-3 | 432 | 14 |
| 13. | Nebraska-Omaha | 13-9-2 | 359 | 13 |
| 14. | Minnesota State | 14-8-2 | 348 | 11 |
| 15. | Niagara | 13-3-4 | 242 | 17 |
| 16. | Cornell | 7-6-2 | 220 | 15 |
| 17. | Union | 10-7-4 | 219 | 16 |
| 18. | UMass-Lowell | 11-7-1 | 175 | 20 |
| 19. | St. Cloud State | 12-10-0 | 135 | 18 |
| 20. | Colgate | 11-7-2 | 118 | 19 |

Others receiving votes: Wisconsin 19, Providence 15, Robert Morris 15, Ferris State 12, Lake Superior 12, Holy Cross 5, Northern Michigan 5, Princeton 4, Colorado College 1, Michigan Tech 1.

ATHLETIC REPUBLIC PLAYER OF THE MONTH

| Week | Player (School) |
|----------|----------------------------------|
| October | Pat Mullane (Boston College) |
| November | Johnny Gaudreau (Boston College) |
| December | Branden Gracel (Massachusetts) |

PRO AMBITIONS ROOKIE OF THE MONTH

| Week | Player (School) |
|----------|---|
| October | Jon Gillies (Providence College) Matt O'Connor (Boston University) |
| November | Matt Grzelcyk (Boston University) |
| December | Kevin Roy (Northeastern) |

HOCKEY EAST GOALTENDER OF THE MONTH

| Week | Player (School) |
|----------|----------------------------------|
| October | Casey DeSmith (New Hampshire) |
| November | Casey DeSmith (New Hampshire) |
| December | Connor Hellebuyck (UMass-Lowell) |



Boston College
13-4-2
(10-3-1 HEA)

OCTOBER

| | | |
|----|---------------------|-------------|
| 6 | NEW BRUNSWICK (Exh) | W, 6-0 |
| 13 | at Northeastern * | L, 1-3 |
| 19 | at Massachusetts * | W, 5-4 (OT) |
| 20 | NORTHEASTERN * | W, 3-0 |
| 26 | at UMass Lowell * | W, 1-0 |
| 28 | UMASS LOWELL * | W, 6-3 |

NOVEMBER

| | | |
|----|------------------------|--------|
| 2 | at Maine * | W, 4-2 |
| 4 | MASSACHUSETTS * | W, 3-2 |
| 9 | NOTRE DAME | W, 3-1 |
| 11 | at Boston University * | W, 4-2 |
| 16 | MERRIMACK * | W, 4-3 |
| 24 | DARTMOUTH | W, 6-3 |
| 30 | at Boston U. * | L, 2-4 |

DECEMBER

| | | |
|----|---------------------------|-------------|
| 1 | BOSTON UNIVERSITY * | W, 5-2 |
| 7 | at Providence * | T, 3-3 (OT) |
| 29 | vs. Alabama-Huntsville \$ | W, 5-2 |
| 30 | vs. Minnesota \$ | L, 1-8 |

JANUARY

| | | |
|----|-----------------------------|-------------|
| 4 | YALE | T, 3-3 (OT) |
| 11 | NEW HAMPSHIRE * | W, 5-2 |
| 12 | at New Hampshire * | L, 1-2 |
| 18 | MASSACHUSETTS * | 7:00 PM |
| 19 | at Northeastern * (WBIN-TV) | 7:00 PM |
| 25 | MAINE * (NESN) | 7:00 PM |
| 26 | MAINE * | 7:00 PM |

FEBRUARY

| | | |
|----|------------------------|-----------|
| 1 | VERMONT * | 7:00 PM |
| 4 | vs. Harvard (BP, NESN) | 8:00 PM |
| 8 | UMASS LOWELL * | 7:00 PM |
| 11 | BU/Northeastern (BP) | 4:30/7:30 |
| 15 | at Merrimack * | 7:30 PM |
| 17 | NEW HAMPSHIRE * | 4:00 PM |
| 24 | at Merrimack * (CBSSN) | 4:00 PM |

MARCH

| | | |
|---|------------------------|---------|
| 1 | at Providence * (COX) | 7:00 PM |
| 2 | PROVIDENCE * | 7:00 PM |
| 8 | at Vermont * | 7:00 PM |
| 9 | at Vermont * (WCAX-TV) | 7:00 PM |



Boston University
12-7-0
(9-4-0 HEA)

OCTOBER

| | | |
|----|--------------------|--------|
| 7 | TORONTO (Exh) | W, 5-0 |
| 13 | PROVIDENCE * | W, 4-2 |
| 20 | at New Hampshire * | L, 1-4 |
| 26 | MASSACHUSETTS * | W, 5-2 |
| 27 | at Massachusetts * | W, 3-2 |

NOVEMBER

| | | |
|----|------------------|--------|
| 2 | at North Dakota | L, 2-4 |
| 3 | at North Dakota | W, 4-2 |
| 9 | at Merrimack * | W, 3-1 |
| 11 | BOSTON COLLEGE * | L, 2-4 |
| 16 | at Vermont * | W, 6-2 |
| 18 | NEW HAMPSHIRE * | L, 1-3 |
| 24 | ST. LAWRENCE | W, 4-0 |
| 30 | BOSTON COLLEGE * | W, 4-2 |

DECEMBER

| | | |
|----|---------------------|--------|
| 1 | at Boston College * | L, 2-5 |
| 6 | at New Hampshire * | W, 3-2 |
| 8 | MAINE * | W, 1-0 |
| 29 | at Denver \$ | L, 0-6 |

JANUARY

| | | |
|----|-----------------------|-------------|
| 4 | RENSELAEER | W, 3-2 (OT) |
| 9 | HARVARD | L, 5-6 (OT) |
| 11 | at Merrimack * | W, 4-1 |
| 18 | NORTHEASTERN * (NESN) | 7:00 PM |
| 19 | UMASS LOWELL * | 7:00 PM |
| 25 | at Providence * | 7:00 PM |
| 26 | PROVIDENCE * (NESN) | 7:00 PM |

FEBRUARY

| | | |
|----|-----------------------------|-----------|
| 1 | at Massachusetts * | 7:00 PM |
| 4 | vs. Northeastern (BP, NESN) | 5:00 PM |
| 8 | MERRIMACK * | 7:30 PM |
| 11 | vs. Harvard/BC (BP) | 4:30/7:30 |
| 15 | at Maine * (NBCSN) | 7:30 PM |
| 16 | at Maine * (NESN) | 7:00 PM |
| 22 | UMASS LOWELL * | 7:30 PM |
| 23 | at UMass Lowell * | 7:00 PM |

MARCH

| | | |
|---|---------------------------|---------|
| 1 | VERMONT * | 7:30 PM |
| 2 | VERMONT * | 7:00 PM |
| 8 | at Northeastern * (CBSSN) | 7:30 PM |
| 9 | NORTHEASTERN * | 7:00 PM |



Maine
5-13-3
(1-8-3 HEA)

OCTOBER

| | | |
|----|---------------------|-------------|
| 6 | vs. QUINNIPIAC | L, 1-2 |
| 7 | NEW BRUNSWICK (Exh) | T, 2-2 (OT) |
| 12 | vs. Notre Dame \$ | L, 0-1 |
| 13 | vs. Army \$ | W, 4-3 |
| 19 | ST. LAWRENCE | L, 0-5 |
| 20 | ST. LAWRENCE | L, 1-5 |
| 26 | at Providence * | L, 2-3 |
| 27 | at Providence * | L, 0-3 |

NOVEMBER

| | | |
|----|-------------------|-------------|
| 2 | BOSTON COLLEGE * | L, 2-4 |
| 4 | NEW HAMPSHIRE * | L, 0-4 |
| 9 | at UMass Lowell * | L, 1-2 |
| 10 | at UMass Lowell * | W, 4-3 |
| 16 | MASSACHUSETTS * | T, 2-2 (OT) |
| 30 | VERMONT * | L, 1-2 |

DECEMBER

| | | |
|----|------------------------|-------------|
| 1 | VERMONT * | T, 2-2 (OT) |
| 8 | at Boston University * | L, 0-1 |
| 28 | vs. Minnesota-Duluth # | W, 1-0 |
| 29 | vs. Cornell # | W, 6-4 |

JANUARY

| | | |
|----|----------------------------|-------------|
| 4 | MERCYHURST ^ | W, 2-1 |
| 5 | MERCYHURST | L, 2-5 |
| 11 | at Northeastern * | T, 1-1 (OT) |
| 12 | at Merrimack * | L, 0-6 |
| 18 | MERRIMACK * | 7:00 PM |
| 19 | MERRIMACK * (WABI-TV) | 7:00 PM |
| 25 | at Boston College * (NESN) | 7:00 PM |
| 26 | at Boston College * | 7:00 PM |

FEBRUARY

| | | |
|----|---------------------------|---------|
| 1 | PROVIDENCE * | 7:00 PM |
| 3 | UMASS LOWELL * | 2:00 PM |
| 9 | at Vermont * (WCAX-TV) | 7:00 PM |
| 15 | BOSTON U. * (NBCSN) | 7:30 PM |
| 16 | BOSTON U. * (NESN) | 7:00 PM |
| 22 | at Massachusetts * | 7:00 PM |
| 23 | at Massachusetts * (CBS3) | 7:00 PM |

MARCH

| | | |
|---|--------------------------|---------|
| 1 | NORTHEASTERN * (WABI-TV) | 7:00 PM |
| 2 | NORTHEASTERN * (WABI-TV) | 7:00 PM |
| 8 | at New Hampshire * | 7:30 PM |
| 9 | at New Hampshire * | 7:00 PM |

\$ - IceBreaker Tournament
- Florida College Classic
^ - Cumberland Country Civic Center (Portland, ME)



Massachusetts
7-11-2
(4-8-1 HEA)

OCTOBER

| | | |
|----|------------------------|-------------|
| 12 | CONNECTICUT | W, 4-1 |
| 19 | BOSTON COLLEGE * | L, 4-5 (OT) |
| 26 | at Boston University * | L, 2-5 |
| 27 | BOSTON U. * (CBS3) | L, 2-3 |

NOVEMBER

| | | |
|----|---------------------|-------------|
| 2 | NEW HAMPSHIRE * | W, 2-1 (OT) |
| 4 | at Boston College * | L, 2-3 |
| 9 | PROVIDENCE * | W, 4-0 |
| 16 | at Maine * | T, 2-2 (OT) |
| 18 | UMASS LOWELL * | L, 2-8 |
| 20 | VERMONT * | W, 3-1 |
| 24 | QUINNIPIAC | T, 2-2 (OT) |
| 30 | NORTHEASTERN * | L, 0-1 |

DECEMBER

| | | |
|----|----------------------|--------|
| 1 | at Northeastern * | W, 6-3 |
| 7 | COLGATE | L, 4-6 |
| 8 | COLGATE | L, 2-5 |
| 11 | at Yale | L, 2-4 |
| 30 | vs. Bemidji State \$ | W, 4-3 |
| 31 | vs. Dartmouth \$ | W, 3-2 |

JANUARY

| | | |
|----|---------------------|---------|
| 11 | PROVIDENCE * | L, 4-5 |
| 12 | at Providence * | L, 0-2 |
| 18 | at Boston College * | 7:30 PM |
| 25 | at Vermont * | 7:05 PM |
| 26 | at Vermont * | 7:05 PM |

FEBRUARY

| | | |
|----|-----------------------|---------|
| 1 | BOSTON UNIVERSITY * | 7:00 PM |
| 8 | NORTHEASTERN * | 7:00 PM |
| 9 | at Merrimack * (NESN) | 3:30 PM |
| 15 | UMASS LOWELL * | 7:00 PM |
| 16 | at UMass Lowell * | 7:00 PM |
| 22 | MAINE * | 7:00 PM |
| 23 | MAINE * (CBS3) | 7:00 PM |

MARCH

| | | |
|---|------------------------------|---------|
| 1 | at New Hampshire * (WBIN-TV) | 7:30 PM |
| 2 | at New Hampshire * (WBIN-TV) | 7:00 PM |
| 8 | at Merrimack * (WBIN-TV) | 7:30 PM |
| 9 | MERRIMACK * (CBS3) | 7:00 PM |

\$ - Ledyard Bank Classic (Hanover, NH)



UMass-Lowell
11-7-1
(5-6-1 HEA)

OCTOBER

| | | |
|----|---------------------|-------------|
| 6 | TORONTO (Exh) | W, 5-2 |
| 12 | VERMONT * | T, 1-1 (OT) |
| 19 | at Denver | L, 1-5 |
| 20 | at Colorado College | W, 3-1 |
| 26 | BOSTON COLLEGE * | L, 0-1 |
| 28 | at Boston College * | L, 3-6 |

NOVEMBER

| | | |
|----|--------------------|--------|
| 9 | MAINE * | W, 2-1 |
| 10 | MAINE * | L, 3-4 |
| 16 | NEW HAMPSHIRE * | L, 0-3 |
| 18 | at Massachusetts * | W, 8-2 |
| 24 | PRINCETON | W, 3-1 |
| 30 | at New Hampshire * | L, 2-5 |

DECEMBER

| | | |
|----|-----------------|--------|
| 1 | NEW HAMPSHIRE * | L, 2-5 |
| 8 | NORTHEASTERN * | W, 2-0 |
| 10 | at Harvard | W, 5-0 |
| 30 | BENTLEY | W, 3-2 |

JANUARY

| | | |
|----|------------------------|---------|
| 4 | at Clarkson | W, 2-1 |
| 5 | at Clarkson | W, 6-2 |
| 11 | at Vermont * | W, 4-2 |
| 12 | at Vermont * | W, 6-3 |
| 17 | PROVIDENCE * | 7:00 PM |
| 19 | at Boston University * | 7:00 PM |
| 25 | at Northeastern * | 7:00 PM |
| 26 | NORTHEASTERN * | 7:00 PM |

FEBRUARY

| | | |
|----|------------------------|---------|
| 1 | at Merrimack * (NESN) | 7:00 PM |
| 3 | at Maine * | 2:00 PM |
| 8 | at Boston College * | 7:00 PM |
| 15 | at Massachusetts * | 7:00 PM |
| 16 | MASSACHUSETTS * | 7:00 PM |
| 22 | at Boston University * | 7:30 PM |
| 23 | BOSTON UNIVERSITY * | 7:00 PM |

MARCH

| | | |
|---|------------------------|---------|
| 1 | MERRIMACK * | 7:00 PM |
| 3 | at Merrimack * (CBSSN) | 4:00 PM |
| 8 | PROVIDENCE * | 7:00 PM |
| 9 | at Providence * | 7:00 PM |

Home games in CAPS
* denotes Hockey East game

\$ - Mariucci Classic



Merrimack
8-9-4
(6-5-1 HEA)

OCTOBER

| | | |
|----|--------------------|-------------|
| 6 | at Union | W, 4-1 |
| 10 | at Northeastern * | L, 2-4 |
| 19 | at Alaska S | L, 2-3 |
| 20 | Alaska Anchorage S | L, 3-6 |
| 26 | VERMONT * | W, 6-3 |
| 27 | VERMONT * | T, 2-2 (OT) |

NOVEMBER

| | | |
|----|---------------------|-------------|
| 2 | at Northeastern * | W, 5-2 |
| 3 | NORTHEASTERN * | W, 4-2 |
| 9 | BOSTON UNIVERSITY * | L, 1-3 |
| 10 | CONNECTICUT | L, 1-3 |
| 16 | at Boston College * | L, 3-4 |
| 23 | COLGATE | T, 1-1 (OT) |
| 30 | PROVIDENCE * | L, 2-3 (OT) |

DECEMBER

| | | |
|----|---------------------|-------------|
| 1 | at Providence * | W, 2-1 |
| 7 | HARVARD | T, 2-2 (OT) |
| 8 | U.S. UNDER-18 (Exh) | L, 1-3 |
| 11 | ARMY | W, 4-2 |
| 29 | vs. Princeton # | T, 2-2 (OT) |
| 30 | vs. Union # | L, 1-4 |

JANUARY

| | | |
|----|----------------------|---------|
| 5 | at Vermont * | W, 4-1 |
| 11 | BOSTON UNIVERSITY * | L, 1-4 |
| 12 | MAINE * | W, 6-0 |
| 18 | at Maine * (WABI-TV) | 7:00 PM |
| 19 | at Maine * | 7:00 PM |
| 25 | NEW HAMPSHIRE * | 7:30 PM |
| 26 | at New Hampshire ^ | 5:00 PM |

FEBRUARY

| | | |
|----|------------------------------|---------|
| 1 | UMASS LOWELL * | 7:30 PM |
| 2 | at New Hampshire * (WBIN-TV) | 7:00 PM |
| 8 | at Boston University * | 7:30 PM |
| 9 | MASSACHUSETTS * (NESN) | 4 PM |
| 15 | BOSTON COLLEGE * | 7:30 PM |
| 17 | at Providence * (COX) | 4:00 PM |
| 24 | BOSTON COLLEGE * (CBSSN) | 4:00 PM |

MARCH

| | | |
|---|---------------------------|---------|
| 1 | at UMass Lowell * | 7:00 PM |
| 3 | UMASS LOWELL * (CBSSN) | 4:00 PM |
| 8 | MASSACHUSETTS * (WBIN-TV) | 7:30 PM |
| 9 | at Massachusetts * (CBS3) | 7:00 PM |

S - Alaska Gold Rush (Fairbanks, AK)
- Catamount Cup (Burlington, VT)
^ - Verizon Wireless (Manchester, NH)



New Hampshire
14-4-2
(9-3-1 HEA)

OCTOBER

| | | |
|----|--------------------------|-------------|
| 6 | ST. FRANCIS XAVIER (Exh) | W, 5-2 |
| 12 | ST. CLOUD STATE | W, 5-3 |
| 13 | ST. CLOUD STATE | W, 4-2 |
| 20 | BOSTON UNIVERSITY * | W, 4-1 |
| 26 | NORTHEASTERN * | W, 4-3 |
| 27 | at Northeastern * | T, 0-0 (OT) |

NOVEMBER

| | | |
|----|------------------------|-------------|
| 2 | at Massachusetts * | L, 1-2 (OT) |
| 4 | at Maine * | W, 4-0 |
| 10 | VERMONT * | W, 4-0 |
| 16 | at UMass Lowell * | W, 3-0 |
| 18 | at Boston University * | W, 3-1 |
| 23 | at Colorado College | T, 4-4 (OT) |
| 24 | at Denver | W, 6-4 |
| 30 | UMASS LOWELL * | W, 5-2 |

DECEMBER

| | | |
|----|---------------------|-------------|
| 1 | at UMass Lowell * | W, 5-2 |
| 6 | BOSTON UNIVERSITY * | L, 2-3 |
| 9 | U.S. UNDER-18 (Exh) | T, 2-2 (OT) |
| 30 | at Dartmouth S | L, 1-4 |
| 31 | vs. Bemidji State S | W, 3-2 (OT) |

JANUARY

| | | |
|----|---------------------|---------|
| 5 | RENSSELAER | W, 5-2 |
| 11 | at Boston College * | L, 2-5 |
| 12 | BOSTON COLLEGE * | W, 2-1 |
| 19 | PROVIDENCE * | 7:00 PM |
| 25 | at Merrimack * | 7:30 PM |
| 26 | MERRIMACK # | 5:00 PM |

FEBRUARY

| | | |
|----|-----------------------|---------|
| 1 | at Northeastern * | 7:00 PM |
| 2 | MERRIMACK * (WBIN-TV) | 7:00 PM |
| 8 | at Providence * (COX) | 7:00 PM |
| 10 | PROVIDENCE * (CBSSN) | 4:00 PM |
| 17 | at Boston College * | 4:00 PM |
| 22 | at Vermont * (NESN) | 7:00 PM |
| 23 | at Vermont * (CBSSN) | 4:00 PM |

MARCH

| | | |
|---|---------------------------|---------|
| 1 | MASSACHUSETTS * (WBIN-TV) | 7:30 PM |
| 2 | MASSACHUSETTS * (WBIN-TV) | 7:00 PM |
| 8 | MAINE * (NBCSN) | 7:30 PM |
| 9 | MAINE * | 7:00 PM |

S - Ledyard Bank Classic (Hanover, NH)
- Verizon Wireless Arena (Manchester, NH)



Northeastern
6-10-2
(3-8-2 HEA)

OCTOBER

| | | |
|----|--------------------------|-------------|
| 7 | ST. FRANCIS XAVIER (Exh) | L, 3-4 |
| 10 | MERRIMACK * | W, 4-2 |
| 13 | BOSTON COLLEGE * | W, 3-1 |
| 20 | at Boston College * | L, 0-3 |
| 26 | at New Hampshire * | L, 3-4 |
| 27 | NEW HAMPSHIRE * | T, 0-0 (OT) |

NOVEMBER

| | | |
|----|--------------------|--------|
| 2 | MERRIMACK * | L, 2-5 |
| 3 | at Merrimack * | L, 2-4 |
| 10 | ALAB-HUNTSVILLE | W, 3-0 |
| 11 | ALAB-HUNTSVILLE | W, 3-1 |
| 16 | at Providence * | L, 2-6 |
| 18 | at Vermont * | L, 2-3 |
| 23 | ST. LAWRENCE | L, 2-5 |
| 30 | at Massachusetts * | W, 1-0 |

DECEMBER

| | | |
|----|-------------------|--------|
| 1 | MASSACHUSETTS * | L, 3-6 |
| 8 | at UMass Lowell * | L, 0-2 |
| 29 | at Harvard | W, 5-1 |

JANUARY

| | | |
|----|-------------------------------|-------------|
| 5 | BENTLEY | L, 3-6 |
| 11 | MAINE * | T, 1-1 (OT) |
| 18 | at Boston University * (NESN) | 7:00 PM |
| 19 | BOSTON COLLEGE * (WABI-TV) | 7:00 PM |
| 25 | UMASS LOWELL * | 7:00 PM |
| 26 | at UMass Lowell * | 7:00 PM |

FEBRUARY

| | | |
|----|--------------------------|-----------|
| 1 | NEW HAMPSHIRE * | 7:00 PM |
| 4 | vs. Boston U. (BP, NESN) | 5:00 PM |
| 8 | at Massachusetts * | 7:00 PM |
| 11 | vs. Harvard / BC (BP) | 4:30/7:30 |
| 15 | VERMONT * | 7:00 PM |
| 16 | VERMONT * | 7:00 PM |
| 22 | at Providence * | 7:00 PM |
| 23 | PROVIDENCE * | 7:00 PM |

MARCH

| | | |
|---|-----------------------------|---------|
| 1 | at Maine * (WABI-TV) | 7:00 PM |
| 2 | at Maine * (WABI-TV) | 7:00 PM |
| 8 | BOSTON UNIVERSITY * (CBSSN) | 7:30 PM |
| 9 | at Boston University * | 7:00 PM |



Providence
9-8-3
(7-4-2 HEA)

OCTOBER

| | | |
|----|------------------------|-------------|
| 12 | SACRED HEART | W, 8-2 |
| 13 | at Boston University * | L, 2-4 |
| 19 | at Miami | T, 1-1 (OT) |
| 20 | at Miami | L, 3-4 (OT) |
| 26 | MAINE * | W, 3-2 |
| 27 | MAINE * | W, 3-0 |

NOVEMBER

| | | |
|----|--------------------|-------------|
| 2 | at Vermont * | W, 3-2 |
| 3 | at Vermont * | L, 0-2 |
| 9 | at Massachusetts * | L, 0-4 |
| 16 | NORTHEASTERN * | W, 6-2 |
| 20 | QUINNIPIAC | L, 0-2 |
| 24 | at Brown S | W, 7-0 |
| 30 | at Merrimack * | W, 3-2 (OT) |

DECEMBER

| | | |
|----|------------------|-------------|
| 1 | MERRIMACK * | L, 1-2 |
| 7 | BOSTON COLLEGE * | T, 3-3 (OT) |
| 20 | VERMONT * | T, 4-4 (OT) |

JANUARY

| | | |
|----|-------------------------------|-------------|
| 4 | at Minnesota State | L, 3-4 (OT) |
| 5 | at Minnesota State | L, 0-4 |
| 11 | at Massachusetts * | W, 5-4 |
| 12 | MASSACHUSETTS * | W, 2-0 |
| 17 | at UMass Lowell * | 7:00 PM |
| 19 | at New Hampshire * | 7:00 PM |
| 25 | BOSTON UNIVERSITY * | 7:00 PM |
| 26 | at Boston University * (NESN) | 7:00 PM |

FEBRUARY

| | | |
|----|----------------------------|---------|
| 1 | at Maine * | 7:00 PM |
| 8 | NEW HAMPSHIRE * (COX) | 7:00 PM |
| 10 | at New Hampshire * (CBSSN) | 4:00 PM |
| 17 | MERRIMACK * (COX) | 4:00 PM |
| 22 | NORTHEASTERN * | 7:00 PM |
| 23 | at Northeastern * | 7:00 PM |

MARCH

| | | |
|---|------------------------|---------|
| 1 | BOSTON COLLEGE * (COX) | 7:00 PM |
| 2 | at Boston College * | 7:00 PM |
| 8 | at UMass Lowell * | 7:00 PM |
| 9 | UMASS LOWELL * | 7:00 PM |

S - Mayor's Cup



Vermont
6-11-4
(3-8-4 HEA)

OCTOBER

| | | |
|----|-------------------|-------------|
| 6 | CONCORDIA (Exh) | W, 7-1 |
| 12 | at UMass Lowell * | T, 1-1 (OT) |
| 26 | at Merrimack * | L, 3-6 |
| 27 | at Merrimack * | T, 2-2 (OT) |

NOVEMBER

| | | |
|----|---------------------|---------|
| 2 | PROVIDENCE * | L, 2-3 |
| 3 | PROVIDENCE * | W, 2-0 |
| 10 | at New Hampshire * | L, 0-4 |
| 16 | BOSTON UNIVERSITY * | L, 2-6 |
| 18 | NORTHEASTERN * | W, 3-2 |
| 20 | at Massachusetts * | 7:00 PM |
| 23 | MINNESOTA | L, 1-5 |
| 24 | MINNESOTA | L, 1-3 |
| 30 | at Maine * | W, 2-1 |

DECEMBER

| | | |
|----|-----------------|-------------|
| 1 | at Maine * | T, 2-2 (OT) |
| 5 | at Dartmouth | L, 2-4 |
| 15 | at St. Lawrence | W, 5-2 |
| 20 | at Providence * | T, 4-4 (OT) |
| 29 | UNION S | W, 2-1 |
| 30 | PRINCETON S | W, 6-3 |

JANUARY

| | | |
|----|-------------------------------|---------|
| 5 | MERRIMACK * | L, 1-4 |
| 11 | UMASS LOWELL * | L, 2-4 |
| 12 | UMASS LOWELL * | L, 3-6 |
| 19 | vs. Penn State # (CSN-Phila.) | 7:00 PM |
| 25 | MASSACHUSETTS * | 7:00 PM |
| 26 | MASSACHUSETTS * | 7:00 PM |

FEBRUARY

| | | |
|----|-------------------------|---------|
| 1 | at Boston College * | 7:00 PM |
| 9 | MAINE * (WCAX-TV) | 7:00 PM |
| 15 | at Northeastern * | 7:00 PM |
| 16 | at Northeastern * | 7:00 PM |
| 22 | NEW HAMPSHIRE * (NESN) | 7:00 PM |
| 23 | NEW HAMPSHIRE * (CBSSN) | 4:00 PM |

MARCH

| | | |
|---|----------------------------|---------|
| 1 | at Boston University * | 7:30 PM |
| 2 | at Boston University * | 7:00 PM |
| 8 | BOSTON COLLEGE * | 7:00 PM |
| 9 | BOSTON COLLEGE * (WCAX-TV) | 7:00 PM |

S - Catamount Cup
- Wells Fargo Center (Philadelphia, Pa.)

Home games in CAPS
* denotes Hockey East games

National Category Leaders

| Points Per Game | | GP | G-A-P | P/GM | |
|-----------------|-----------------------|------------------|---------|----------|------|
| 1 | Johnny Gaudreau (CGY) | Boston College | SO F 16 | 12-14-26 | 1.62 |
| 2 | Brett Gensler | Bentley | JR F 19 | 11-18-29 | 1.53 |
| 3 | Ryan Walters | Nebraska Omaha | JR F 24 | 15-21-36 | 1.50 |
| | Danny Kristo (MTL) | North Dakota | SR F 20 | 13-17-30 | 1.50 |
| 5 | Corban Knight (FLA) | North Dakota | SR F 21 | 10-21-31 | 1.48 |
| 6 | Kevin Goumas | New Hampshire | JR F 20 | 9-19-28 | 1.40 |
| 7 | Tyler Sikura | Dartmouth | SO F 16 | 8-14-22 | 1.38 |
| 8 | Erik Haula (MIN) | Minnesota | JR F 19 | 9-17-26 | 1.37 |
| 9 | Drew LeBlanc | St. Cloud State | SR F 22 | 6-24-30 | 1.36 |
| 10 | Kyle Flanagan | St. Lawrence | SR F 20 | 10-17-27 | 1.35 |
| 11 | Andrew Calof | Princeton | JR F 18 | 9-15-24 | 1.33 |
| | Greg Carey | St. Lawrence | JR F 21 | 13-15-28 | 1.33 |
| 13 | Kenny Agostino (PIT) | Yale | JR F 16 | 9-12-21 | 1.31 |
| 14 | Rylan Schwartz | Colorado College | SR F 23 | 11-19-30 | 1.30 |
| 15 | Pat Mullane | Boston College | SR F 19 | 10-13-23 | 1.21 |
| 16 | Matt Lindblad | Dartmouth | JR F 15 | 7-11-18 | 1.20 |
| | Riley Barber (WSH) | Miami | FR F 20 | 9-15-24 | 1.20 |
| 18 | William Rapuzzi | Colorado College | SR F 24 | 12-16-28 | 1.17 |
| 19 | Mike Collins | Merrimack | JR F 21 | 11-13-24 | 1.14 |
| 20 | Austin Czarnik | Miami | SO F 22 | 8-17-25 | 1.14 |
| | Kyle Rau (FLA) | Minnesota | SO F 22 | 13-12-25 | 1.14 |
| 22 | Matt Lorito | Brown | SO F 16 | 12-6-18 | 1.12 |
| | Matt Leitner | Minnesota State | SO F 24 | 9-18-27 | 1.12 |
| | Antoine Laganiere | Yale | SR F 16 | 10-8-18 | 1.12 |
| 25 | Giancarlo Iuorio | Niagara | SR F 18 | 12-8-20 | 1.11 |
| | Kevin Roy (ANA) | Northeastern | FR F 18 | 9-11-20 | 1.11 |

| Goals Against Average | | Minutes | GA | GAA | | |
|-----------------------|--------------------|-------------------|----|---------|----|------|
| 1 | Brady Hjelle | Ohio State | SR | 960:14 | 23 | 1.44 |
| 2 | Carsen Chubak | Niagara | JR | 1150:43 | 28 | 1.46 |
| 3 | Eric Hartzell | Quinnipiac | SR | 1299:08 | 32 | 1.48 |
| 4 | Steven Summerhays | Notre Dame | JR | 1158:02 | 31 | 1.61 |
| 5 | Adam Wilcox (TBL) | Minnesota | FR | 1236:12 | 34 | 1.65 |
| 6 | Frank Slubowski | Western Michigan | SO | 1280:51 | 38 | 1.78 |
| 7 | Anthony Borelli | Brown | SR | 438:01 | 13 | 1.78 |
| 8 | Jake Hildebrand | Michigan State | FR | 863:23 | 26 | 1.81 |
| 9 | Sean Maguire (PIT) | Boston University | FR | 393:08 | 12 | 1.83 |
| 10 | Stephon Williams | Minnesota State | FR | 1041:25 | 32 | 1.84 |
| 11 | Juho Olkinuora | Denver | SO | 742:33 | 23 | 1.86 |
| 12 | Tony Capobianco | Canisius | JR | 1184:15 | 37 | 1.87 |
| 13 | Jay Williams | Miami | FR | 909:41 | 29 | 1.91 |
| 14 | Landon Peterson | Wisconsin | SO | 528:35 | 17 | 1.93 |
| 15 | Jon Gillies (CGY) | Providence | FR | 1013:08 | 33 | 1.95 |
| 16 | Kevin Murdock | Lake Superior | JR | 828:16 | 27 | 1.96 |
| 17 | Joel Rumpel | Wisconsin | SO | 698:49 | 23 | 1.97 |
| 18 | Cab Morris | Dartmouth | JR | 544:15 | 18 | 1.98 |
| 19 | Casey DeSmith | New Hampshire | SO | 1141:19 | 39 | 2.05 |
| 20 | Sam Marotta | Merrimack | JR | 670:23 | 24 | 2.15 |
| 21 | Eric Levine | Robert Morris | SR | 948:16 | 34 | 2.15 |
| 22 | Spencer Finney | Colgate | FR | 551:48 | 20 | 2.17 |
| 23 | C.J. Motte | Ferris State | SO | 1236:54 | 46 | 2.23 |
| 24 | Tommy Burke | Bowling Green | FR | 456:46 | 17 | 2.23 |
| 25 | Clarke Saunders | North Dakota | JR | 1027:46 | 39 | 2.28 |

| Points Per Game (Defensemen) | | GP | G-A-P | P/GM | |
|------------------------------|---------------------------|-------------------|---------|---------|------|
| 1 | Nate Schmidt | Minnesota | JR D 22 | 3-19-22 | 1.00 |
| 2 | Greg Coburn | Union | SR D 21 | 7-11-18 | 0.86 |
| 3 | Joey LaLeggia (EDM) | Denver | SO D 23 | 7-12-19 | 0.83 |
| 4 | Chris Saracino | RIT | SR D 20 | 4-12-16 | 0.80 |
| 5 | Mike Boivin | Colorado College | SR D 24 | 9-10-19 | 0.79 |
| 6 | Steve Weinstein | Bentley | SO D 19 | 5-10-15 | 0.79 |
| 7 | Shayne Gostisbehere (PHI) | Union | SO D 17 | 5-8-13 | 0.76 |
| 8 | Nolan Zajac | Denver | FR D 21 | 3-13-16 | 0.76 |
| | Robbie Russo (NYI) | Notre Dame | SO D 21 | 5-11-16 | 0.76 |
| | George Hughes | St. Lawrence | SR D 21 | 3-13-16 | 0.76 |
| 11 | Trevor van Riemsdyk | New Hampshire | SO D 20 | 6-9-15 | 0.75 |
| | Kevin Ryan | Niagara | JR D 20 | 1-14-15 | 0.75 |
| | Greg Noyes | RIT | JR D 20 | 5-10-15 | 0.75 |
| 14 | Matt Blomquist | Bentley | FR D 19 | 2-12-14 | 0.74 |
| | Michael Matheson (FLA) | Boston College | FR D 19 | 4-10-14 | 0.74 |
| | Jacob Trouba (WPG) | Michigan | FR D 19 | 7-7-14 | 0.74 |
| 17 | Nick Jensen (DET) | St. Cloud State | JR D 22 | 1-15-16 | 0.73 |
| 18 | Matt Grzelczyk (BOS) | Boston University | FR D 18 | 2-11-13 | 0.72 |
| 19 | Wade Bergman | Minnesota Duluth | SR D 21 | 2-13-15 | 0.71 |
| 20 | Andrej Sustr | Nebraska Omaha | JR D 24 | 6-11-17 | 0.71 |

| Save Percentage | | Saves | GA | Save % | | |
|-----------------|--------------------|-------------------|----|--------|----|------|
| 1 | Carsen Chubak | Niagara | JR | 569 | 28 | .953 |
| 2 | Brady Hjelle | Ohio State | SR | 453 | 23 | .952 |
| 3 | Eric Levine | Robert Morris | SR | 589 | 34 | .945 |
| 4 | Jake Hildebrand | Michigan State | FR | 427 | 26 | .943 |
| 5 | Juho Olkinuora | Denver | SO | 372 | 23 | .942 |
| 6 | Kevin Murdock | Lake Superior | JR | 433 | 27 | .941 |
| 7 | Sean Maguire (PIT) | Boston University | FR | 183 | 12 | .938 |
| 8 | Tony Capobianco | Canisius | JR | 560 | 37 | .938 |
| 9 | Anthony Borelli | Brown | SR | 192 | 13 | .937 |
| 10 | Steven Summerhays | Notre Dame | JR | 447 | 31 | .935 |
| 11 | Jordan Tibbett | Mercyhurst | JR | 269 | 19 | .934 |
| 12 | Eric Hartzell | Quinnipiac | SR | 447 | 32 | .933 |
| 13 | Landon Peterson | Wisconsin | SO | 234 | 17 | .932 |
| 14 | Jon Gillies (CGY) | Providence | FR | 443 | 33 | .931 |
| 15 | Casey DeSmith | New Hampshire | SO | 501 | 39 | .928 |
| 16 | Chris Rawlings | Northeastern | SR | 380 | 30 | .927 |
| 17 | Joel Rumpel | Wisconsin | SO | 290 | 23 | .927 |
| 18 | Jay Williams | Miami | FR | 364 | 29 | .926 |
| 19 | C.J. Motte | Ferris State | SO | 577 | 46 | .926 |
| 20 | Adam Wilcox (TBL) | Minnesota | FR | 419 | 34 | .925 |

| Points Per Game (Freshmen) | | GP | G-A-P | P/GM | |
|----------------------------|------------------------|-------------------|-------|----------|------|
| 1 | Riley Barber (WSH) | Miami | F 20 | 9-15-24 | 1.20 |
| 2 | Kevin Roy (ANA) | Northeastern | F 18 | 9-11-20 | 1.11 |
| 3 | Tony Cameranesi (TOR) | Minnesota Duluth | F 22 | 10-12-22 | 1.00 |
| 4 | Tylor Spink | Colgate | F 20 | 6-13-19 | 0.95 |
| 5 | Andrew Gladiuk | Bentley | F 18 | 10-7-17 | 0.94 |
| 6 | David Glen | Penn State | F 19 | 9-8-17 | 0.89 |
| | Casey Bailey | Penn State | F 19 | 9-8-17 | 0.89 |
| 8 | Alex Petan | Michigan Tech | F 21 | 7-11-18 | 0.86 |
| 9 | Kyle Baun | Colgate | F 20 | 10-7-17 | 0.85 |
| | Austin Farley | Minnesota Duluth | F 20 | 8-9-17 | 0.85 |
| | Rocco Grimaldi (FLA) | North Dakota | F 20 | 7-10-17 | 0.85 |
| | Kalle Kossila | St. Cloud State | F 20 | 11-6-17 | 0.85 |
| 13 | Jimmy Vesey (NSH) | Harvard | F 11 | 6-3-9 | 0.82 |
| 14 | Danny O'Regan (SJS) | Boston University | F 19 | 7-8-15 | 0.79 |
| | Tyson Spink | Colgate | F 19 | 5-10-15 | 0.79 |
| 16 | Nolan Zajac | Denver | D 21 | 3-13-16 | 0.76 |
| | Juhar Khaira (EDM) | Michigan Tech | F 21 | 4-12-16 | 0.76 |
| 18 | Matt Blomquist | Bentley | D 19 | 2-12-14 | 0.74 |
| | Michael Matheson (FLA) | Boston College | D 19 | 4-10-14 | 0.74 |
| | Jacob Trouba (WPG) | Michigan | D 19 | 7-7-14 | 0.74 |

| Winning Percentage | | W-L-T | Win % | | |
|--------------------|--------------------|-------------------|-------|--------|------|
| 1 | Eric Hartzell | Quinnipiac | SR | 17-2-3 | .841 |
| 2 | Adam Wilcox (TBL) | Minnesota | FR | 15-2-3 | .825 |
| 3 | Carsen Chubak | Niagara | JR | 13-2-4 | .789 |
| 4 | Juho Olkinuora | Denver | SO | 7-1-4 | .750 |
| 5 | Parker Milner | Boston College | SR | 13-4-2 | .737 |
| | Casey DeSmith | New Hampshire | SO | 13-4-2 | .737 |
| 7 | Cab Morris | Dartmouth | JR | 6-2-1 | .722 |
| 8 | Sean Maguire (PIT) | Boston University | FR | 5-2-0 | .714 |
| 9 | John Faulkner | Nebraska Omaha | SR | 11-4-2 | .706 |
| 10 | Jay Williams | Miami | FR | 9-3-3 | .700 |
| | Max Strang | Mercyhurst | SR | 7-3-0 | .700 |
| 12 | Jeff Malcolm | Yale | SR | 8-3-2 | .692 |
| 13 | Eric Levine | Robert Morris | SR | 10-4-2 | .688 |
| 14 | Steven Summerhays | Notre Dame | JR | 13-6-0 | .684 |
| 15 | Frank Slubowski | Western Michigan | SO | 13-5-4 | .682 |
| 16 | Clarke Saunders | North Dakota | JR | 10-4-3 | .676 |
| 17 | Spencer Finney | Colgate | FR | 6-3-1 | .650 |
| 18 | Stephon Williams | Minnesota State | FR | 11-6-1 | .639 |
| 19 | Landon Peterson | Wisconsin | SO | 4-2-2 | .625 |
| 20 | Matt Ginn | Holy Cross | SO | 10-6-2 | .611 |

National Category Leaders

| Goals Per Game | | GP | G | G/GM |
|----------------|-----------------------|-------------------|------------|------|
| 1 | Johnny Gaudreau (CGY) | Boston College | SO F 16 12 | 0.75 |
| | Matt Lorito | Brown | SO F 16 12 | 0.75 |
| 3 | Giancarlo Iuorio | Niagara | SR F 18 12 | 0.67 |
| 4 | Danny Kristo (MTL) | North Dakota | SR F 20 13 | 0.65 |
| 5 | Ryan Walters | Nebraska Omaha | JR F 24 15 | 0.62 |
| | Antoine Laganiere | Yale | SR F 16 10 | 0.62 |
| 7 | Greg Carey | St. Lawrence | JR F 21 13 | 0.62 |
| 8 | Wade Megan (FLA) | Boston University | SR F 18 11 | 0.61 |
| 9 | Michael Mersch (LOS) | Wisconsin | JR F 20 12 | 0.60 |
| 10 | Kyle Rau (FLA) | Minnesota | SO F 22 13 | 0.59 |
| 11 | Brett Gensler | Bentley | JR F 19 11 | 0.58 |
| 12 | Anders Lee (NYI) | Notre Dame | JR F 21 12 | 0.57 |
| 13 | Kenny Agostino (PIT) | Yale | JR F 16 9 | 0.56 |
| 14 | Andrew Gladiuk | Bentley | FR F 18 10 | 0.56 |
| | Chris Bodo | Mercyhurst | SO F 18 10 | 0.56 |
| 16 | Kalle Kossila | St. Cloud State | FR F 20 11 | 0.55 |
| 17 | Nick Bjugstad (FLA) | Minnesota | JR F 22 12 | 0.55 |
| | Matt White | Nebraska Omaha | JR F 22 12 | 0.55 |
| | Jimmy Vesey (NSH) | Harvard | FR F 11 6 | 0.55 |
| 20 | Josh Archibald (PIT) | Nebraska Omaha | SO F 24 13 | 0.54 |
| 21 | John Esposito | Cornell | SR F 13 7 | 0.54 |
| 22 | Pat Mullane | Boston College | SR F 19 10 | 0.53 |
| | Steven Whitney | Boston College | SR F 19 10 | 0.53 |
| | Blake Pietila (NJD) | Michigan Tech | SO F 19 10 | 0.53 |
| 25 | Mike Collins | Merrimack | JR F 21 11 | 0.52 |

| Assists Per Game | | GP | A | A/GM |
|------------------|-----------------------|-------------------|------------|------|
| 1 | Drew LeBlanc | St. Cloud State | SR F 22 24 | 1.09 |
| 2 | Corban Knight (FLA) | North Dakota | SR F 21 21 | 1.00 |
| 3 | Kevin Goumas | New Hampshire | JR F 20 19 | 0.95 |
| 4 | Brett Gensler | Bentley | JR F 19 18 | 0.95 |
| 5 | Erik Haula (MIN) | Minnesota | JR F 19 17 | 0.89 |
| 6 | Ryan Walters | Nebraska Omaha | JR F 24 21 | 0.88 |
| | Johnny Gaudreau (CGY) | Boston College | SO F 16 14 | 0.88 |
| | Tyler Sikura | Dartmouth | SO F 16 14 | 0.88 |
| 9 | Nate Schmidt | Minnesota | JR D 22 19 | 0.86 |
| 10 | Kyle Bodie | Union | SR F 21 18 | 0.86 |
| 11 | Danny Kristo (MTL) | North Dakota | SR F 20 17 | 0.85 |
| | Kyle Flanagan | St. Lawrence | SR F 20 17 | 0.85 |
| 13 | Andrew Calof | Princeton | JR F 18 15 | 0.83 |
| 14 | Rylan Schwartz | Colorado College | SR F 23 19 | 0.83 |
| 15 | Austin Czarnik | Miami | SO F 22 17 | 0.77 |
| 16 | Matt Leitner | Minnesota State | SO F 24 18 | 0.75 |
| | Riley Barber (WSH) | Miami | FR F 20 15 | 0.75 |
| | Kenny Agostino (PIT) | Yale | JR F 16 12 | 0.75 |
| 19 | Cason Hohmann | Boston University | SO F 19 14 | 0.74 |
| 20 | Matt Lindblad | Dartmouth | JR F 15 11 | 0.73 |
| 21 | Derek Lee | Wisconsin | SR F 18 13 | 0.72 |
| 22 | Greg Carey | St. Lawrence | JR F 21 15 | 0.71 |
| 23 | Kevin Ryan | Niagara | JR D 20 14 | 0.70 |
| 24 | Danny Mattson | Bemidji State | SO F 16 11 | 0.69 |
| 25 | Pat Mullane | Boston College | SR F 19 13 | 0.68 |
| | Evan Zych | Holy Cross | SR D 19 13 | 0.68 |

| Power Play Goals | | GP | PPG/G | PPG |
|------------------|-----------------------|------------------|--------------|-----|
| 1 | Chris Bodo | Mercyhurst | SO F 18 0.44 | 8 |
| 2 | Eriah Hayes | Minnesota State | SR F 24 0.29 | 7 |
| 3 | Greg Carey | St. Lawrence | JR F 21 0.29 | 6 |
| | Kyle Rau (FLA) | Minnesota | SO F 22 0.27 | 6 |
| | Mike Seidel | Minnesota Duluth | SR F 22 0.27 | 6 |
| 6 | Michael Colavecchia | RIT | JR F 14 0.36 | 5 |
| | Matt Lorito | Brown | SO F 16 0.31 | 5 |
| | Antoine Laganiere | Yale | SR F 16 0.31 | 5 |
| | Alex Grieve | Bentley | SO F 19 0.26 | 5 |
| | Steven Whitney | Boston College | SR F 19 0.26 | 5 |
| | Jacob Trouba (WPG) | Michigan | FR D 19 0.26 | 5 |
| | Aaron McLeod | Bemidji State | SR F 20 0.25 | 5 |
| | Greg Coburn | Union | SR D 21 0.24 | 5 |
| | Kyle Bonis | Ferris State | SR F 22 0.23 | 5 |
| | Nick Bjugstad (FLA) | Minnesota | JR F 22 0.23 | 5 |
| | Tony Cameranesi (TOR) | Minnesota Duluth | FR F 22 0.23 | 5 |
| | Dane Walters | Western Michigan | SR F 22 0.23 | 5 |
| | David Makowski | Denver | JR D 23 0.22 | 5 |

| Game-Winning Goals | | GP | GWG |
|--------------------|-----------------------|-----------------|-----------|
| 1 | Johnny Gaudreau (CGY) | Boston College | SO F 16 6 |
| 2 | Kyle Rau (FLA) | Minnesota | SO F 22 5 |
| 3 | Russell Goodman | Quinnipiac | SR F 17 4 |
| | Sean Ambrosie | Connecticut | SR F 19 4 |
| | Nic Dowd (LOS) | St. Cloud State | JR F 22 4 |
| | Johnny McInnis | Minnesota State | JR F 24 4 |
| 7 | 25 Players Tied With | | 3 |

| Shorthanded Goals | | GP | SHG/G | SHG |
|-------------------|-----------------------|-------------------|--------------|-----|
| 1 | Adam Brace | Robert Morris | SR F 19 0.16 | 3 |
| | Grayson Downing | New Hampshire | SO F 20 0.15 | 3 |
| | Austin Czarnik | Miami | SO F 22 0.14 | 3 |
| 4 | Tyler Sikura | Dartmouth | SO F 16 0.12 | 2 |
| | Wade Megan (FLA) | Boston University | SR F 18 0.11 | 2 |
| | Daniel O'Donoghue | Mercyhurst | JR F 19 0.11 | 2 |
| | Matthew Peca (TBL) | Quinnipiac | SO F 20 0.10 | 2 |
| | Dennis Rix | Michigan Tech | JR F 21 0.10 | 2 |
| | Kyle Essery | St. Lawrence | JR F 21 0.10 | 2 |
| | Patrick Doherty | St. Lawrence | SO F 21 0.10 | 2 |
| | Kyle Bodie | Union | SR F 21 0.10 | 2 |
| | Cory Kane | Ferris State | JR F 22 0.09 | 2 |
| | Chase Balisy (NSH) | Western Michigan | JR F 22 0.09 | 2 |
| | Brent Gwidt (WSH) | Nebraska Omaha | SR F 24 0.08 | 2 |
| 15 | 105 Players Tied With | | | 1 |

National Team Leaders

TEAM SCORING

| SCORING OFFENSE | GP | Goals | G/GM |
|---------------------------|----|-------|------|
| 1 Minnesota | 22 | 84 | 3.82 |
| 2 Nebraska Omaha | 24 | 88 | 3.67 |
| 3 Colgate | 20 | 72 | 3.60 |
| 4 Bentley | 19 | 68 | 3.58 |
| 5 Denver | 23 | 82 | 3.57 |
| 6 North Dakota | 22 | 76 | 3.45 |
| 7 Boston College | 19 | 65 | 3.42 |
| 8 Colorado College | 24 | 81 | 3.38 |
| 9 New Hampshire | 20 | 67 | 3.35 |
| 10 Yale | 16 | 52 | 3.25 |
| 11 Holy Cross | 20 | 64 | 3.20 |
| 12 Dartmouth | 16 | 51 | 3.19 |
| 13 St. Cloud State | 22 | 70 | 3.18 |
| 14 Union | 21 | 66 | 3.14 |
| 15 Minnesota State | 24 | 75 | 3.12 |
| 16 Air Force | 21 | 65 | 3.10 |
| 17 Mercyhurst | 19 | 58 | 3.05 |
| 18 Niagara | 20 | 61 | 3.05 |
| RIT | 20 | 61 | 3.05 |
| 20 Boston University | 19 | 57 | 3.00 |
| 21 Quinnipiac | 23 | 68 | 2.96 |
| 22 UMass Lowell | 19 | 56 | 2.95 |
| 23 Ferris State | 22 | 64 | 2.91 |
| 24 Notre Dame | 21 | 61 | 2.90 |
| 25 St. Lawrence | 21 | 60 | 2.86 |
| 26 Providence | 20 | 57 | 2.85 |
| 27 Robert Morris | 19 | 54 | 2.84 |
| 28 Michigan | 22 | 61 | 2.77 |
| 29 Merrimack | 21 | 58 | 2.76 |
| 30 Minnesota Duluth | 22 | 60 | 2.73 |
| 31 Michigan Tech | 21 | 57 | 2.71 |
| 32 Massachusetts | 20 | 54 | 2.70 |
| 33 Penn State | 19 | 51 | 2.68 |
| 34 Alaska | 20 | 52 | 2.60 |
| 35 Cornell | 15 | 38 | 2.53 |
| 36 Clarkson | 21 | 53 | 2.52 |
| 37 Miami | 22 | 55 | 2.50 |
| Princeton | 18 | 45 | 2.50 |
| 39 Rensselaer | 21 | 52 | 2.48 |
| 40 Harvard | 14 | 34 | 2.43 |
| 41 Brown | 16 | 38 | 2.38 |
| 42 Wisconsin | 20 | 47 | 2.35 |
| 43 Western Michigan | 22 | 51 | 2.32 |
| 44 Army | 20 | 46 | 2.30 |
| Bemidji State | 20 | 46 | 2.30 |
| 46 Lake Superior | 24 | 55 | 2.29 |
| 47 Canisius | 22 | 50 | 2.27 |
| 48 Connecticut | 19 | 43 | 2.26 |
| 49 Northern Michigan | 23 | 52 | 2.26 |
| 50 Vermont | 21 | 47 | 2.24 |
| 51 Northeastern | 18 | 39 | 2.17 |
| 52 American International | 19 | 41 | 2.16 |
| 53 Bowling Green | 21 | 44 | 2.10 |
| Sacred Heart | 21 | 44 | 2.10 |
| 55 Michigan State | 22 | 44 | 2.00 |
| 56 Ohio State | 22 | 43 | 1.95 |
| 57 Alaska Anchorage | 20 | 39 | 1.95 |
| 58 Maine | 21 | 32 | 1.52 |
| 59 Alabama-Huntsville | 21 | 31 | 1.48 |

TEAM DEFENSE

| SCORING DEFENSE | GP | Goals | G/GM |
|---------------------------|----|-------|------|
| 1 Quinnipiac | 23 | 37 | 1.61 |
| 2 Miami | 22 | 36 | 1.64 |
| 3 Notre Dame | 21 | 37 | 1.76 |
| 4 Minnesota | 22 | 40 | 1.82 |
| 5 Canisius | 22 | 41 | 1.86 |
| Western Michigan | 22 | 41 | 1.86 |
| 7 Ohio State | 22 | 45 | 2.05 |
| 8 New Hampshire | 20 | 41 | 2.05 |
| Niagara | 20 | 41 | 2.05 |
| 10 Wisconsin | 20 | 43 | 2.15 |
| 11 Dartmouth | 16 | 36 | 2.25 |
| 12 Lake Superior | 24 | 55 | 2.29 |
| 13 Robert Morris | 19 | 44 | 2.32 |
| 14 Union | 21 | 49 | 2.33 |
| 15 UMass Lowell | 19 | 45 | 2.37 |
| 16 Minnesota State | 24 | 57 | 2.38 |
| 17 Providence | 20 | 48 | 2.40 |
| 18 Ferris State | 22 | 53 | 2.41 |
| 19 Denver | 23 | 57 | 2.48 |
| 20 North Dakota | 22 | 55 | 2.50 |
| 21 Merrimack | 21 | 53 | 2.52 |
| 22 Cornell | 15 | 38 | 2.53 |
| 23 Boston College | 19 | 49 | 2.58 |
| Connecticut | 19 | 49 | 2.58 |
| 25 Colgate | 20 | 52 | 2.60 |
| 26 Bowling Green | 21 | 55 | 2.62 |
| 27 Boston University | 19 | 50 | 2.63 |
| 28 St. Cloud State | 22 | 58 | 2.64 |
| 29 Northern Michigan | 23 | 61 | 2.65 |
| 30 Michigan State | 22 | 59 | 2.68 |
| 31 Alaska | 20 | 54 | 2.70 |
| 32 Brown | 16 | 44 | 2.75 |
| 33 Minnesota Duluth | 22 | 61 | 2.77 |
| 34 Northeastern | 18 | 50 | 2.78 |
| 35 Nebraska Omaha | 24 | 67 | 2.79 |
| 36 Air Force | 21 | 59 | 2.81 |
| Maine | 21 | 59 | 2.81 |
| 38 Princeton | 18 | 51 | 2.83 |
| 39 Rensselaer | 21 | 60 | 2.86 |
| 40 Yale | 16 | 46 | 2.88 |
| 41 St. Lawrence | 21 | 61 | 2.90 |
| 42 Mercyhurst | 19 | 56 | 2.95 |
| 43 Bemidji State | 20 | 60 | 3.00 |
| 44 Clarkson | 21 | 64 | 3.05 |
| 45 Penn State | 19 | 58 | 3.05 |
| 46 Army | 20 | 62 | 3.10 |
| Holy Cross | 20 | 62 | 3.10 |
| Massachusetts | 20 | 62 | 3.10 |
| 49 Harvard | 14 | 44 | 3.14 |
| Vermont | 21 | 66 | 3.14 |
| 51 Bentley | 19 | 62 | 3.26 |
| 52 Michigan Tech | 21 | 69 | 3.29 |
| 53 Alaska Anchorage | 20 | 66 | 3.30 |
| 54 Michigan | 22 | 77 | 3.50 |
| 55 RIT | 20 | 72 | 3.60 |
| 56 Colorado College | 24 | 90 | 3.75 |
| 57 American International | 19 | 76 | 4.00 |
| 58 Alabama-Huntsville | 21 | 87 | 4.14 |
| 59 Sacred Heart | 21 | 108 | 5.14 |



National Team Leaders

POWER PLAY

PENALTY KILL

| POWER PLAY | Totals | SHA | PP% |
|----------------------|--------|-----|------|
| 1 Union | 26/103 | 2 | 25.2 |
| 2 Boston College | 19/76 | 2 | 25.0 |
| Minnesota | 27/108 | 2 | 25.0 |
| 4 Mercyhurst | 18/75 | 0 | 24.0 |
| 5 Princeton | 14/61 | 0 | 23.0 |
| 6 Minnesota Duluth | 23/101 | 3 | 22.8 |
| 7 Bentley | 15/66 | 2 | 22.7 |
| 8 RIT | 17/76 | 6 | 22.4 |
| 9 Denver | 23/103 | 6 | 22.3 |
| 10 Yale | 19/86 | 3 | 22.1 |
| 11 Ferris State | 17/78 | 3 | 21.8 |
| 12 Colgate | 19/89 | 0 | 21.3 |
| 13 North Dakota | 19/90 | 2 | 21.1 |
| 14 Colorado College | 17/82 | 2 | 20.7 |
| 15 Nebraska Omaha | 18/88 | 4 | 20.5 |
| 16 Minnesota State | 24/118 | 1 | 20.3 |
| 17 Massachusetts | 21/106 | 5 | 19.8 |
| 18 Bemidji State | 12/61 | 0 | 19.7 |
| 19 Western Michigan | 22/114 | 1 | 19.3 |
| 20 Holy Cross | 17/89 | 1 | 19.1 |
| 21 American Int'l | 9/48 | 1 | 18.8 |
| 22 St. Lawrence | 19/102 | 0 | 18.6 |
| 23 Lake Superior | 18/97 | 1 | 18.6 |
| 24 Michigan Tech | 16/91 | 2 | 17.6 |
| 25 Brown | 10/58 | 2 | 17.2 |
| UMass Lowell | 15/87 | 3 | 17.2 |
| Rensselaer | 15/87 | 6 | 17.2 |
| 28 Merrimack | 17/100 | 4 | 17.0 |
| 29 Notre Dame | 16/95 | 0 | 16.8 |
| St. Cloud State | 16/95 | 5 | 16.8 |
| 31 Dartmouth | 10/61 | 4 | 16.4 |
| 32 Michigan State | 14/86 | 3 | 16.3 |
| 33 Air Force | 13/80 | 4 | 16.2 |
| 34 Niagara | 12/75 | 1 | 16.0 |
| 35 Cornell | 11/70 | 0 | 15.7 |
| 36 Northeastern | 11/72 | 0 | 15.3 |
| 37 Canisius | 12/79 | 0 | 15.2 |
| 38 Alab-Huntsville | 12/80 | 1 | 15.0 |
| New Hampshire | 12/80 | 1 | 15.0 |
| 40 Miami | 15/104 | 1 | 14.4 |
| 41 Army | 12/84 | 1 | 14.3 |
| 42 Alaska | 14/99 | 3 | 14.1 |
| 43 Quinnipiac | 15/111 | 5 | 13.5 |
| 44 Vermont | 12/89 | 3 | 13.5 |
| 45 Boston University | 11/82 | 1 | 13.4 |
| Clarkson | 11/82 | 3 | 13.4 |
| 47 Northern Michigan | 12/92 | 5 | 13.0 |
| 48 Providence | 11/85 | 2 | 12.9 |
| 49 Michigan | 12/93 | 4 | 12.9 |
| 50 Harvard | 7/55 | 1 | 12.7 |
| 51 Connecticut | 9/77 | 4 | 11.7 |
| 52 Bowling Green | 10/87 | 5 | 11.5 |
| 53 Wisconsin | 6/60 | 0 | 10.0 |
| 54 Alaska Anchorage | 6/65 | 0 | 9.2 |
| 55 Penn State | 7/76 | 0 | 9.2 |
| 56 Maine | 9/100 | 3 | 9.0 |
| 57 Ohio State | 8/92 | 3 | 8.7 |
| 58 Robert Morris | 7/84 | 3 | 8.3 |
| 59 Sacred Heart | 7/89 | 6 | 7.9 |

| PENALTY KILL | Totals | SHF | PK% |
|----------------------|---------|-----|------|
| 1 New Hampshire | 63/67 | 4 | 94.0 |
| 2 Dartmouth | 55/59 | 3 | 93.2 |
| 3 Canisius | 73/80 | 2 | 91.2 |
| 4 Quinnipiac | 100/110 | 3 | 90.9 |
| 5 Notre Dame | 78/86 | 3 | 90.7 |
| Union | 78/86 | 5 | 90.7 |
| 7 Minnesota | 67/74 | 1 | 90.5 |
| 8 Miami | 92/104 | 6 | 88.5 |
| 9 Niagara | 80/91 | 2 | 87.9 |
| 10 Alaska | 87/99 | 3 | 87.9 |
| 11 Connecticut | 68/78 | 1 | 87.2 |
| 12 Western Michigan | 78/90 | 2 | 86.7 |
| 13 Robert Morris | 84/97 | 5 | 86.6 |
| 14 Denver | 82/95 | 2 | 86.3 |
| 15 UMass Lowell | 62/72 | 3 | 86.1 |
| 16 Michigan State | 74/86 | 0 | 86.0 |
| Princeton | 74/86 | 2 | 86.0 |
| 18 Rensselaer | 73/85 | 1 | 85.9 |
| 19 Ohio State | 73/86 | 2 | 84.9 |
| 20 Northeastern | 67/79 | 2 | 84.8 |
| 21 RIT | 78/92 | 2 | 84.8 |
| 22 Ferris State | 83/98 | 3 | 84.7 |
| 23 Lake Superior | 96/114 | 1 | 84.2 |
| 24 Penn State | 73/87 | 2 | 83.9 |
| 25 St. Cloud State | 57/68 | 2 | 83.8 |
| 26 Boston College | 77/92 | 1 | 83.7 |
| Minnesota State | 77/92 | 4 | 83.7 |
| 28 Maine | 82/98 | 2 | 83.7 |
| 29 Minnesota Duluth | 81/97 | 1 | 83.5 |
| 30 St. Lawrence | 80/96 | 5 | 83.3 |
| 31 Merrimack | 78/94 | 1 | 83.0 |
| 32 Yale | 63/76 | 1 | 82.9 |
| 33 Air Force | 58/70 | 3 | 82.9 |
| 34 Wisconsin | 62/75 | 2 | 82.7 |
| 35 Nebraska Omaha | 87/106 | 6 | 82.1 |
| 36 Michigan | 73/89 | 2 | 82.0 |
| 37 North Dakota | 67/82 | 2 | 81.7 |
| 38 Boston University | 75/92 | 2 | 81.5 |
| 39 Mercyhurst | 47/58 | 4 | 81.0 |
| 40 Providence | 76/94 | 2 | 80.9 |
| 41 Colgate | 63/78 | 5 | 80.8 |
| 42 Massachusetts | 67/83 | 3 | 80.7 |
| 43 Vermont | 79/100 | 0 | 79.0 |
| 44 Army | 60/76 | 1 | 78.9 |
| Michigan Tech | 75/95 | 2 | 78.9 |
| 46 Bentley | 56/71 | 4 | 78.9 |
| 47 Harvard | 41/52 | 1 | 78.8 |
| 48 Bemidji State | 67/85 | 0 | 78.8 |
| 49 Cornell | 51/65 | 1 | 78.5 |
| 50 Bowling Green | 65/83 | 0 | 78.3 |
| 51 Northern Michigan | 79/101 | 2 | 78.2 |
| 52 Alab-Huntsville | 61/78 | 0 | 78.2 |
| 53 American Int'l | 57/74 | 0 | 77.0 |
| 54 Clarkson | 74/97 | 3 | 76.3 |
| 55 Alaska Anchorage | 63/83 | 4 | 75.9 |
| 56 Colorado College | 66/87 | 5 | 75.9 |
| 57 Brown | 46/61 | 3 | 75.4 |
| 58 Holy Cross | 57/76 | 1 | 75.0 |
| 59 Sacred Heart | 66/93 | 1 | 71.0 |



Hockey East Overall Scoring Leaders

Goal Scoring

| | | | | GP | G | GPG | |
|----|-----------------|-----|----|----|----|-----|------|
| 1 | Johnny Gaudreau | BC | SO | F | 16 | 12 | 0.75 |
| 2 | Wade Megan | BU | SR | F | 18 | 11 | 0.61 |
| | Mike Collins | MC | JR | F | 21 | 11 | 0.52 |
| 4 | Pat Mullane | BC | SR | F | 19 | 10 | 0.53 |
| | Steven Whitney | BC | SR | F | 19 | 10 | 0.53 |
| | Austin Block | UNH | SR | F | 20 | 10 | 0.50 |
| 7 | Kevin Roy | NU | FR | F | 18 | 9 | 0.50 |
| | Bill Arnold | BC | JR | F | 19 | 9 | 0.47 |
| | Kevin Goumas | UNH | JR | F | 20 | 9 | 0.45 |
| 10 | Riley Wetmore | UML | SR | F | 19 | 8 | 0.42 |
| | Rocco Carzo | UM | SR | F | 20 | 8 | 0.40 |
| | Branden Gracel | UM | JR | F | 20 | 8 | 0.40 |
| | Grayson Downing | UNH | SO | F | 20 | 8 | 0.40 |
| | Derek Army | PC | JR | F | 20 | 8 | 0.40 |
| 15 | Cody Ferriero | NU | JR | F | 18 | 7 | 0.39 |
| | Danny O'Regan | BU | FR | F | 19 | 7 | 0.37 |
| | Joseph Pendenza | UML | JR | F | 19 | 7 | 0.37 |
| | Scott Wilson | UML | SO | F | 19 | 7 | 0.37 |
| | John Henrion | UNH | SR | F | 20 | 7 | 0.35 |
| | Ross Mauermann | PC | SO | F | 20 | 7 | 0.35 |

Assist Scoring

| | | | | GP | A | APG | |
|----|------------------|-----|----|----|----|-----|------|
| 1 | Kevin Goumas | UNH | JR | F | 20 | 19 | 0.95 |
| 2 | Johnny Gaudreau | BC | SO | F | 16 | 14 | 0.88 |
| | Cason Hohmann | BU | SO | F | 19 | 14 | 0.74 |
| 4 | Pat Mullane | BC | SR | F | 19 | 13 | 0.68 |
| | Mike Collins | MC | JR | F | 21 | 13 | 0.62 |
| 6 | Kevin Hayes | BC | JR | F | 19 | 12 | 0.63 |
| | Chris McCarthy | UVM | SR | F | 21 | 12 | 0.57 |
| 8 | Matt Grzelcyk | BU | FR | D | 18 | 11 | 0.61 |
| | Kevin Roy | NU | FR | F | 18 | 11 | 0.61 |
| | Steven Whitney | BC | SR | F | 19 | 11 | 0.58 |
| | Scott Wilson | UML | SO | F | 19 | 11 | 0.58 |
| 12 | Michael Matheson | BC | FR | D | 19 | 10 | 0.53 |
| | Garrett Noonan | BU | JR | D | 19 | 10 | 0.53 |
| | Conor Sheary | UM | JR | F | 20 | 10 | 0.50 |
| | Branden Gracel | UM | JR | F | 20 | 10 | 0.50 |
| | Myles Harvey | PC | SR | D | 20 | 10 | 0.50 |

Power Play Goals

| | | | | GP | G | GPG | |
|---|-----------------|-----|----|----|----|-----|------|
| 1 | Steven Whitney | BC | SR | F | 19 | 5 | 0.26 |
| 2 | Cody Ferriero | NU | JR | F | 18 | 4 | 0.22 |
| | Kevin Hayes | BC | JR | F | 19 | 4 | 0.21 |
| | Austin Block | UNH | SR | F | 20 | 4 | 0.20 |
| | Jacob Fallon | UVM | SO | F | 21 | 4 | 0.19 |
| 6 | Ludwig Karlsson | NU | SO | F | 16 | 3 | 0.19 |
| | Adam Phillips | UM | JR | D | 17 | 3 | 0.18 |
| | Bill Arnold | BC | JR | F | 19 | 3 | 0.16 |
| | Darren Rowe | UM | SR | D | 19 | 3 | 0.16 |
| | Joseph Pendenza | UML | JR | F | 19 | 3 | 0.16 |
| | Scott Wilson | UML | SO | F | 19 | 3 | 0.16 |
| | Rocco Carzo | UM | SR | F | 20 | 3 | 0.15 |
| | Brian Christie | MC | FR | F | 20 | 3 | 0.15 |
| | Ross Mauermann | PC | SO | F | 20 | 3 | 0.15 |

Power Play Points

| | | | | GP | G-A-P | PPG | |
|---|------------------|-----|----|----|-------|-------|------|
| 1 | Kevin Roy | NU | FR | F | 18 | 2-7-9 | 0.50 |
| | Mike Collins | MC | JR | F | 21 | 2-7-9 | 0.43 |
| 3 | Kevin Hayes | BC | JR | F | 19 | 4-4-8 | 0.42 |
| | Bill Arnold | BC | JR | F | 19 | 3-5-8 | 0.42 |
| | Joseph Pendenza | UML | JR | F | 19 | 3-5-8 | 0.42 |
| | Conor Sheary | UM | JR | F | 20 | 2-6-8 | 0.40 |
| | Conor Allen | UM | JR | D | 20 | 1-7-8 | 0.40 |
| 8 | Steven Whitney | BC | SR | F | 19 | 5-2-7 | 0.37 |
| | Michael Matheson | BC | FR | D | 19 | 2-5-7 | 0.37 |
| | Chad Ruhwedel | UML | JR | D | 19 | 1-6-7 | 0.37 |
| | Connor Toomey | MC | SO | F | 21 | 2-5-7 | 0.33 |
| | Chris McCarthy | UVM | SR | F | 21 | 1-6-7 | 0.33 |

Shorthanded Goals

| | | | | GP | G | GPG | |
|---|----------------------|-----|----|----|----|-----|------|
| 1 | Grayson Downing | UNH | SO | F | 20 | 3 | 0.15 |
| 2 | Wade Megan | BU | SR | F | 18 | 2 | 0.11 |
| 3 | 15 Players Tied With | | | | | 1 | |

Game-Winning Goals

| | | | | GP | G | GPG | |
|---|----------------------|-----|----|----|----|-----|------|
| 1 | Johnny Gaudreau | BC | SO | F | 16 | 6 | 0.38 |
| 2 | Michael Colantone | UML | FR | F | 13 | 3 | 0.23 |
| | Wade Megan | BU | SR | F | 18 | 3 | 0.17 |
| | Branden Gracel | UM | JR | F | 20 | 3 | 0.15 |
| 5 | 16 Players Tied With | | | | | 2 | |

Plus-Minus

| | | | | GP | +/- | |
|----|---------------------|-----|----|----|-----|-----|
| 1 | Cason Hohmann | BU | SO | F | 19 | +20 |
| 2 | Steven Whitney | BC | SR | F | 19 | +16 |
| | Kevin Goumas | UNH | JR | F | 20 | +16 |
| | Alex Velischek | PC | SR | D | 20 | +16 |
| 5 | Johnny Gaudreau | BC | SO | F | 16 | +15 |
| | Pat Mullane | BC | SR | F | 19 | +15 |
| 7 | Michael Matheson | BC | FR | D | 19 | +14 |
| 8 | Wade Megan | BU | SR | F | 18 | +13 |
| 9 | Trevor van Riemsdyk | UNH | SO | D | 20 | +12 |
| 10 | Derek Army | PC | JR | F | 20 | +11 |

Hat Tricks

| | | | | GP | HT | |
|---|-----------------|-----|----|----|----|---|
| 1 | Cody Ferriero | NU | JR | F | 18 | 1 |
| | Riley Wetmore | UML | SR | F | 19 | 1 |
| | Kevin Goumas | UNH | JR | F | 20 | 1 |
| | Grayson Downing | UNH | SO | F | 20 | 1 |
| | Derek Army | PC | JR | F | 20 | 1 |

Hockey East Overall Goaltending Leaders

Goals Against Average

| | | | GP | Minutes | GA | GAA | Record | SO | Saves | Save % | NHL | |
|----|------------------|-----|----|---------|---------|-----|--------|--------|-------|--------|------|-----|
| 1 | Sean Maguire | BU | FR | 7 | 393:08 | 12 | 1.83 | 5-2-0 | 2 | 183 | .938 | PIT |
| 2 | Jon Gillies | PC | FR | 17 | 1013:08 | 33 | 1.95 | 9-6-2 | 3 | 443 | .931 | CGY |
| 3 | Casey DeSmith | UNH | SO | 20 | 1141:19 | 39 | 2.05 | 13-4-2 | 4 | 501 | .928 | |
| 4 | Sam Marotta | MC | JR | 11 | 670:23 | 24 | 2.15 | 5-4-2 | 1 | 292 | .924 | |
| 5 | Martin Ouellette | ME | JR | 13 | 706:17 | 27 | 2.29 | 3-6-3 | 1 | 296 | .916 | CLB |
| 6 | Chris Rawlings | NU | SR | 14 | 770:35 | 30 | 2.34 | 6-6-1 | 2 | 380 | .927 | |
| 7 | Parker Milner | BC | SR | 19 | 1133:42 | 46 | 2.43 | 13-4-2 | 2 | 537 | .921 | |
| 8 | Rasmus Tirronen | MC | SO | 10 | 604:42 | 26 | 2.58 | 3-5-2 | 0 | 247 | .905 | |
| 9 | Kevin Boyle | UM | SO | 16 | 967:23 | 42 | 2.60 | 7-7-2 | 1 | 377 | .900 | |
| 10 | Doug Carr | UML | JR | 14 | 771:21 | 34 | 2.64 | 6-6-1 | 0 | 322 | .904 | |
| 11 | Matt O'Connor | BU | FR | 13 | 743:49 | 35 | 2.82 | 7-5-0 | 0 | 373 | .914 | |
| 12 | Brody Hoffman | UVM | FR | 21 | 1221:14 | 60 | 2.95 | 6-11-4 | 1 | 550 | .902 | |

Save Percentage

| | | | GP | Minutes | GA | GAA | Record | SO | Saves | Save % | NHL | |
|----|------------------|-----|----|---------|---------|-----|--------|--------|-------|--------|------|-----|
| 1 | Sean Maguire | BU | FR | 7 | 393:08 | 12 | 1.83 | 5-2-0 | 2 | 183 | .938 | PIT |
| 2 | Jon Gillies | PC | FR | 17 | 1013:08 | 33 | 1.95 | 9-6-2 | 3 | 443 | .931 | CGY |
| 3 | Casey DeSmith | UNH | SO | 20 | 1141:19 | 39 | 2.05 | 13-4-2 | 4 | 501 | .928 | |
| 4 | Chris Rawlings | NU | SR | 14 | 770:35 | 30 | 2.34 | 6-6-1 | 2 | 380 | .927 | |
| 5 | Sam Marotta | MC | JR | 11 | 670:23 | 24 | 2.15 | 5-4-2 | 1 | 292 | .924 | |
| 6 | Parker Milner | BC | SR | 19 | 1133:42 | 46 | 2.43 | 13-4-2 | 2 | 537 | .921 | |
| 7 | Martin Ouellette | ME | JR | 13 | 706:17 | 27 | 2.29 | 3-6-3 | 1 | 296 | .916 | CLB |
| 8 | Matt O'Connor | BU | FR | 13 | 743:49 | 35 | 2.82 | 7-5-0 | 0 | 373 | .914 | |
| 9 | Rasmus Tirronen | MC | SO | 10 | 604:42 | 26 | 2.58 | 3-5-2 | 0 | 247 | .905 | |
| 10 | Doug Carr | UML | JR | 14 | 771:21 | 34 | 2.64 | 6-6-1 | 0 | 322 | .904 | |
| 11 | Brody Hoffman | UVM | FR | 21 | 1221:14 | 60 | 2.95 | 6-11-4 | 1 | 550 | .902 | |
| 12 | Kevin Boyle | UM | SO | 16 | 967:23 | 42 | 2.60 | 7-7-2 | 1 | 377 | .900 | |

Saves

| | | | GP | SVS/G | Saves |
|----|-------------------|-----|----|-------|-------|
| 1 | Brody Hoffman | UVM | FR | 21 | 26.2 |
| 2 | Parker Milner | BC | SR | 19 | 28.3 |
| 3 | Casey DeSmith | UNH | SO | 20 | 25.1 |
| 4 | Jon Gillies | PC | FR | 17 | 26.1 |
| 5 | Chris Rawlings | NU | SR | 14 | 27.1 |
| 6 | Kevin Boyle | UM | SO | 16 | 23.6 |
| 7 | Matt O'Connor | BU | FR | 13 | 28.7 |
| 8 | Doug Carr | UML | JR | 14 | 23.0 |
| 9 | Martin Ouellette | ME | JR | 13 | 22.8 |
| 10 | Sam Marotta | MC | JR | 11 | 26.5 |
| 11 | Rasmus Tirronen | MC | SO | 10 | 24.7 |
| 12 | Sean Maguire | BU | FR | 7 | 26.1 |
| 13 | Connor Hellebuyck | UML | FR | 7 | 22.0 |
| 14 | Dan Sullivan | ME | JR | 6 | 25.0 |
| 15 | Bryan Mountain | NU | SR | 5 | 29.0 |
| 16 | Russ Stein | PC | SR | 4 | 25.5 |
| 17 | Matt Morris | ME | FR | 6 | 14.8 |
| | Steve Mastalerz | UM | SO | 4 | 22.2 |
| 19 | Jeff Wyer | UNH | JR | 2 | 13.0 |
| 20 | Clay Witt | NU | JR | 1 | 17.0 |

Shutouts

| | | | GP | Shutouts |
|---|-------------------|-----|----|----------|
| 1 | Casey DeSmith | UNH | SO | 20 |
| 2 | Jon Gillies | PC | FR | 17 |
| 3 | Sean Maguire | BU | FR | 7 |
| | Connor Hellebuyck | UML | FR | 7 |
| | Chris Rawlings | NU | SR | 14 |
| | Parker Milner | BC | SR | 19 |
| 7 | Bryan Mountain | NU | SR | 5 |
| | Sam Marotta | MC | JR | 11 |
| | Martin Ouellette | ME | JR | 13 |
| | Kevin Boyle | UM | SO | 16 |
| | Brody Hoffman | UVM | FR | 21 |

Hockey East Overall Team Stats

TEAM OFFENSE



| Team | Games | Goals | G/GM |
|---------------------|-------|-------|------|
| 1 Boston College | 19 | 65 | 3.42 |
| 2 New Hampshire | 20 | 67 | 3.35 |
| 3 Boston University | 19 | 57 | 3.00 |
| 4 UMass Lowell | 19 | 56 | 2.95 |
| 5 Providence | 20 | 57 | 2.85 |
| 6 Merrimack | 21 | 58 | 2.76 |
| 7 Massachusetts | 20 | 54 | 2.70 |
| 8 Vermont | 21 | 47 | 2.24 |
| 9 Northeastern | 18 | 39 | 2.17 |
| 10 Maine | 21 | 32 | 1.52 |

TEAM DEFENSE



| Team | Games | Goals | G/GM |
|---------------------|-------|-------|------|
| 1 New Hampshire | 20 | 41 | 2.05 |
| 2 UMass Lowell | 19 | 45 | 2.37 |
| 3 Providence | 20 | 48 | 2.40 |
| 4 Merrimack | 21 | 53 | 2.52 |
| 5 Boston College | 19 | 49 | 2.58 |
| 6 Boston University | 19 | 50 | 2.63 |
| 7 Northeastern | 18 | 50 | 2.78 |
| 8 Maine | 21 | 59 | 2.81 |
| 9 Massachusetts | 20 | 62 | 3.10 |
| 10 Vermont | 21 | 66 | 3.14 |

POWER PLAY



| Team | Totals | SHA | PP % |
|---------------------|--------|-----|------|
| 1 Boston College | 19/76 | 2 | 25.0 |
| 2 Massachusetts | 21/106 | 5 | 19.8 |
| 3 UMass Lowell | 15/87 | 3 | 17.2 |
| 4 Merrimack | 17/100 | 4 | 17.0 |
| 5 Northeastern | 11/72 | 0 | 15.3 |
| 6 New Hampshire | 12/80 | 1 | 15.0 |
| 7 Vermont | 12/89 | 3 | 13.5 |
| 8 Boston University | 11/82 | 1 | 13.4 |
| 9 Providence | 11/85 | 2 | 12.9 |
| 10 Maine | 9/100 | 3 | 9.0 |

PENALTY KILL



| Team | Totals | SHF | PK % |
|---------------------|--------|-----|------|
| 1 New Hampshire | 63/67 | 4 | 94.0 |
| 2 UMass Lowell | 62/72 | 3 | 86.1 |
| 3 Northeastern | 67/79 | 2 | 84.8 |
| 4 Boston College | 77/92 | 1 | 83.7 |
| 5 Maine | 82/98 | 2 | 83.7 |
| 6 Merrimack | 78/94 | 1 | 83.0 |
| 7 Boston University | 75/92 | 2 | 81.5 |
| 8 Providence | 76/94 | 2 | 80.9 |
| 9 Massachusetts | 67/83 | 3 | 80.7 |
| 10 Vermont | 79/100 | 0 | 79.0 |

PENALTY MINUTES



| Team | Games | PIM | PIM/G |
|---------------------|-------|-----|-------|
| 1 Maine | 21 | 322 | 15.3 |
| 2 Boston University | 19 | 289 | 15.2 |
| 3 Boston College | 19 | 258 | 13.6 |
| 4 Providence | 20 | 270 | 13.5 |
| 5 Vermont | 21 | 283 | 13.5 |
| 6 Massachusetts | 20 | 262 | 13.1 |
| 7 Northeastern | 18 | 235 | 13.1 |
| 8 UMass Lowell | 19 | 245 | 12.9 |
| 9 Merrimack | 21 | 265 | 12.6 |
| 10 New Hampshire | 20 | 199 | 9.9 |

SHOTS ON GOAL



| Team | Games | SOG | SOG/G |
|---------------------|-------|-----|-------|
| 1 New Hampshire | 20 | 691 | 34.5 |
| 2 Massachusetts | 20 | 655 | 32.8 |
| 3 Maine | 21 | 685 | 32.6 |
| 4 Providence | 20 | 630 | 31.5 |
| 5 Northeastern | 18 | 560 | 31.1 |
| 6 Boston University | 19 | 586 | 30.8 |
| 7 Merrimack | 21 | 646 | 30.8 |
| 8 UMass Lowell | 19 | 578 | 30.4 |
| 9 Boston College | 19 | 560 | 29.5 |
| 10 Vermont | 21 | 578 | 27.5 |

SCORING BY PERIOD



| Team | 1st | 2nd | 3rd | OT | Total |
|---------------------|-----|-----|-----|----|-------|
| 1 New Hampshire | 20 | 24 | 22 | 1 | 67 |
| 2 Boston College | 16 | 24 | 24 | 1 | 65 |
| 3 Merrimack | 12 | 21 | 25 | 0 | 58 |
| 4 Boston University | 14 | 23 | 19 | 1 | 57 |
| Providence | 16 | 19 | 21 | 1 | 57 |
| 6 UMass Lowell | 15 | 21 | 20 | 0 | 56 |
| 7 Massachusetts | 14 | 21 | 18 | 1 | 54 |
| 8 Vermont | 10 | 21 | 16 | 0 | 47 |
| 9 Northeastern | 17 | 7 | 15 | 0 | 39 |
| 10 Maine | 11 | 12 | 9 | 0 | 32 |

GOALS ALLOWED BY PERIOD



| Team | 1st | 2nd | 3rd | OT | Total |
|---------------------|-----|-----|-----|----|-------|
| 1 New Hampshire | 16 | 16 | 8 | 1 | 41 |
| 2 UMass Lowell | 10 | 15 | 20 | 0 | 45 |
| 3 Providence | 13 | 18 | 15 | 2 | 48 |
| 4 Boston College | 10 | 19 | 20 | 0 | 49 |
| 5 Boston University | 13 | 18 | 18 | 1 | 50 |
| Northeastern | 14 | 18 | 18 | 0 | 50 |
| 7 Merrimack | 14 | 21 | 17 | 1 | 53 |
| 8 Maine | 19 | 21 | 19 | 0 | 59 |
| 9 Massachusetts | 20 | 17 | 24 | 1 | 62 |
| 10 Vermont | 21 | 22 | 23 | 0 | 66 |

SPECIAL TEAMS NET



| Team | PPF | SHA | PP NET | PPA | SHF | SH NET | ST NET |
|---------------------|-----|-----|--------|-----|-----|--------|--------|
| 1 New Hampshire | 12 | 1 | +11 | 4 | 4 | 0 | +11 |
| 2 UMass Lowell | 15 | 3 | +12 | 10 | 3 | -7 | +5 |
| 3 Boston College | 19 | 2 | +17 | 15 | 1 | -14 | +3 |
| Massachusetts | 21 | 5 | +16 | 16 | 3 | -13 | +3 |
| 5 Northeastern | 11 | 0 | +11 | 12 | 2 | -10 | +1 |
| 6 Merrimack | 17 | 4 | +13 | 16 | 1 | -15 | -2 |
| 7 Boston University | 11 | 1 | +10 | 17 | 2 | -15 | -5 |
| 8 Providence | 11 | 2 | +9 | 18 | 2 | -16 | -7 |
| 9 Maine | 9 | 3 | +6 | 16 | 2 | -14 | -8 |
| 10 Vermont | 12 | 3 | +9 | 21 | 0 | -21 | -12 |



Hockey East Conference Scoring Leaders

Scoring

| | | | | GP | G-A-P | PPG | PIM | PP | SH | GW | HT | +/- | NHL | |
|----|------------------|-----|----|----|-------|---------|------|-------|----|----|----|-----|-----|-----|
| 1 | Mike Collins | MC | JR | F | 12 | 6-13-19 | 1.58 | 3/6 | 2 | 0 | 1 | 0 | +5 | |
| | Johnny Gaudreau | BC | SO | F | 14 | 8-11-19 | 1.36 | 6/12 | 2 | 0 | 5 | 0 | +8 | CGY |
| 3 | Kevin Goumas | UNH | JR | F | 13 | 6-11-17 | 1.31 | 7/14 | 2 | 0 | 1 | 0 | +9 | |
| 4 | Cason Hohmann | BU | SO | F | 13 | 5-11-16 | 1.23 | 1/2 | 2 | 0 | 1 | 0 | +15 | |
| | Pat Mullane | BC | SR | F | 14 | 6-10-16 | 1.14 | 5/21 | 0 | 0 | 0 | 0 | +8 | |
| 6 | Wade Megan | BU | SR | F | 13 | 8-7-15 | 1.15 | 8/16 | 0 | 2 | 2 | 0 | +13 | FLA |
| | Steven Whitney | BC | SR | F | 14 | 6-9-15 | 1.07 | 9/18 | 3 | 0 | 2 | 0 | +9 | |
| 8 | Scott Wilson | UML | SO | F | 12 | 5-9-14 | 1.17 | 4/8 | 3 | 0 | 1 | 0 | -1 | PIT |
| | Bill Arnold | BC | JR | F | 14 | 7-7-14 | 1.00 | 7/14 | 3 | 1 | 0 | 0 | +1 | CGY |
| | Kevin Hayes | BC | JR | F | 14 | 6-8-14 | 1.00 | 6/12 | 4 | 0 | 1 | 0 | -2 | CHI |
| 11 | Chris McCarthy | UVM | SR | F | 15 | 5-8-13 | 0.87 | 2/4 | 1 | 0 | 0 | 0 | -3 | |
| 12 | Tim Schaller | PC | SR | F | 13 | 4-8-12 | 0.92 | 7/25 | 0 | 0 | 1 | 0 | +6 | |
| 13 | Kevin Roy | NU | FR | F | 13 | 8-3-11 | 0.85 | 5/10 | 2 | 0 | 2 | 0 | -7 | ANA |
| | Derek Army | PC | JR | F | 13 | 7-4-11 | 0.85 | 3/6 | 1 | 0 | 1 | 1 | +8 | |
| 15 | Joseph Pendenza | UML | JR | F | 12 | 4-6-10 | 0.83 | 4/8 | 2 | 1 | 1 | 0 | -2 | |
| | Connor Toomey | MC | SO | F | 12 | 3-7-10 | 0.83 | 6/12 | 2 | 0 | 0 | 0 | +2 | |
| | Austin Block | UNH | SR | F | 13 | 7-3-10 | 0.77 | 7/14 | 3 | 0 | 1 | 0 | +6 | |
| | Garrett Noonan | BU | JR | D | 13 | 3-7-10 | 0.77 | 15/30 | 1 | 0 | 1 | 0 | +5 | NSH |
| | Evan Rodrigues | BU | SO | F | 13 | 3-7-10 | 0.77 | 5/10 | 1 | 0 | 0 | 0 | +10 | |
| | Matt Grzelczyk | BU | FR | D | 13 | 2-8-10 | 0.77 | 5/10 | 0 | 0 | 1 | 0 | +7 | BOS |
| | Conor Sheary | UM | JR | F | 13 | 2-8-10 | 0.77 | 3/6 | 1 | 0 | 0 | 0 | -3 | |
| 22 | Brendan Ellis | MC | JR | D | 12 | 3-6-9 | 0.75 | 3/6 | 2 | 0 | 0 | 0 | -1 | |
| | John Henrion | UNH | SR | F | 13 | 5-4-9 | 0.69 | 5/10 | 1 | 0 | 2 | 0 | +4 | |
| | Branden Gracel | UM | JR | F | 13 | 4-5-9 | 0.69 | 4/8 | 0 | 0 | 1 | 0 | E | |
| | Danny O'Regan | BU | FR | F | 13 | 3-6-9 | 0.69 | 1/2 | 1 | 0 | 1 | 0 | +1 | SJS |
| | Michael Matheson | BC | FR | D | 14 | 4-5-9 | 0.64 | 10/31 | 2 | 0 | 1 | 0 | +11 | FLA |
| | Jacob Fallon | UVM | SO | F | 15 | 3-6-9 | 0.60 | 3/6 | 3 | 0 | 0 | 0 | -5 | |

Defenseman Scoring

| | | | | GP | G-A-P | PPG | PIM | PP | SH | GW | HT | +/- | NHL | |
|----|---------------------|-----|----|----|-------|----------|------|-------|----|----|----|-----|-----|-----|
| 1 | Garrett Noonan | BU | JR | D | 13 | 3-7-10 | 0.77 | 15/30 | 1 | 0 | 1 | 0 | +5 | NSH |
| | Matt Grzelczyk | BU | FR | D | 13 | 2-8-10 | 0.77 | 5/10 | 0 | 0 | 1 | 0 | +7 | BOS |
| 3 | Brendan Ellis | MC | JR | D | 12 | 3-6-9 | 0.75 | 3/6 | 2 | 0 | 0 | 0 | -1 | |
| | Michael Matheson | BC | FR | D | 14 | 4-5-9 | 0.64 | 10/31 | 2 | 0 | 1 | 0 | +11 | FLA |
| 5 | Conor Allen | UM | JR | D | 13 | 4-4-8 | 0.62 | 7/14 | 1 | 0 | 0 | 0 | -10 | |
| | Trevor van Riemsdyk | UNH | SO | D | 13 | 2-6-8 | 0.62 | 0/0 | 1 | 0 | 1 | 0 | +10 | |
| | Patrick Wey | BC | SR | D | 14 | 1-7-8 | 0.57 | 9/18 | 1 | 0 | 0 | 0 | +6 | WSH |
| | Teddy Doherty | BC | FR | D | 14 | 1-7-8 | 0.57 | 4/8 | 1 | 0 | 0 | 0 | +3 | |
| 9 | Alexx Privitera | BU | SO | D | 12 | 2-5-7 | 0.58 | 11/30 | 2 | 0 | 0 | 0 | E | |
| 10 | Kyle Bigos | MC | SR | D | 8 | 3-3-6 | 0.75 | 14/55 | 1 | 0 | 1 | 0 | +4 | EDM |
| | Jordan Heywood | MC | JR | D | 12 | 4-2-6 | 0.50 | 6/12 | 0 | 0 | 2 | 0 | +4 | |
| | Chad Ruhwedel | UML | JR | D | 12 | 1-5-6 | 0.50 | 5/10 | 0 | 0 | 0 | 0 | +3 | |
| | Justin Agosta | UNH | JR | D | 13 | 1-5-6 | 0.46 | 1/2 | 0 | 0 | 0 | 0 | +2 | |
| | Myles Harvey | PC | SR | D | 13 | 0-6-6 | 0.46 | 3/6 | 0 | 0 | 0 | 0 | -2 | |
| 15 | 7 Players Tied With | | | | | 5 Points | | | | | | | | |

Freshman Scoring

| | | | | GP | G-A-P | PPG | PIM | PP | SH | GW | HT | +/- | NHL | |
|---|------------------|-----|----|----|-------|--------|------|-------|----|----|----|-----|-----|-----|
| 1 | Kevin Roy | NU | FR | F | 13 | 8-3-11 | 0.85 | 5/10 | 2 | 0 | 2 | 0 | -7 | ANA |
| 2 | Matt Grzelczyk | BU | FR | D | 13 | 2-8-10 | 0.77 | 5/10 | 0 | 0 | 1 | 0 | +7 | BOS |
| 3 | Danny O'Regan | BU | FR | F | 13 | 3-6-9 | 0.69 | 1/2 | 1 | 0 | 1 | 0 | +1 | SJS |
| | Michael Matheson | BC | FR | D | 14 | 4-5-9 | 0.64 | 10/31 | 2 | 0 | 1 | 0 | +11 | FLA |
| 5 | Teddy Doherty | BC | FR | D | 14 | 1-7-8 | 0.57 | 4/8 | 1 | 0 | 0 | 0 | +3 | |
| 6 | Paul de Jersey | PC | FR | RW | 10 | 1-5-6 | 0.60 | 1/2 | 0 | 0 | 0 | 0 | -1 | |
| | Ryan McGrath | UML | FR | F | 12 | 1-5-6 | 0.50 | 5/10 | 0 | 0 | 0 | 0 | -2 | |
| 8 | Noel Acciari | PC | FR | C | 10 | 2-3-5 | 0.50 | 4/8 | 0 | 0 | 0 | 0 | E | |
| | Mike McMurtry | NU | FR | F | 10 | 1-4-5 | 0.50 | 0/0 | 1 | 0 | 0 | 0 | -4 | |
| | Mark Jankowski | PC | FR | C | 11 | 2-3-5 | 0.45 | 2/4 | 1 | 0 | 1 | 0 | +3 | CGY |
| | Colton Saucerman | NU | FR | D | 11 | 1-4-5 | 0.45 | 6/12 | 0 | 0 | 0 | 0 | -7 | |
| | Ben Hutton | ME | FR | D | 12 | 2-3-5 | 0.42 | 1/2 | 1 | 0 | 0 | 0 | -4 | VAN |
| | Devin Shore | ME | FR | F | 12 | 1-4-5 | 0.42 | 0/0 | 0 | 0 | 0 | 0 | +1 | DAL |
| | Brandon Tanev | PC | FR | LW | 12 | 1-4-5 | 0.42 | 0/0 | 0 | 0 | 0 | 0 | +3 | |
| | Jonathan Turk | UVM | FR | F | 15 | 2-3-5 | 0.33 | 4/8 | 1 | 0 | 0 | 0 | -2 | |
| | Robert Polesello | UVM | FR | F | 15 | 1-4-5 | 0.33 | 1/2 | 0 | 0 | 1 | 0 | -6 | |

Hockey East Conference Scoring Leaders

Goal Scoring

| | | | | GP | G | GPG | Assist Scoring | | | | GP | A | APG | | |
|----|-----------------|-----|----|----|----|-----|----------------|----|-----------------|-----|----|---|-----|----|------|
| 1 | Wade Megan | BU | SR | F | 13 | 8 | 0.62 | 1 | Mike Collins | MC | JR | F | 12 | 13 | 1.08 |
| | Kevin Roy | NU | FR | F | 13 | 8 | 0.62 | 2 | Cason Hohmann | BU | SO | F | 13 | 11 | 0.85 |
| | Johnny Gaudreau | BC | SO | F | 14 | 8 | 0.57 | | Kevin Goumas | UNH | JR | F | 13 | 11 | 0.85 |
| 4 | Austin Block | UNH | SR | F | 13 | 7 | 0.54 | | Johnny Gaudreau | BC | SO | F | 14 | 11 | 0.79 |
| | Derek Army | PC | JR | F | 13 | 7 | 0.54 | 5 | Pat Mullane | BC | SR | F | 14 | 10 | 0.71 |
| | Bill Arnold | BC | JR | F | 14 | 7 | 0.50 | 6 | Scott Wilson | UML | SO | F | 12 | 9 | 0.75 |
| 7 | Riley Wetmore | UML | SR | F | 12 | 6 | 0.50 | | Steven Whitney | BC | SR | F | 14 | 9 | 0.64 |
| | Mike Collins | MC | JR | F | 12 | 6 | 0.50 | 8 | Matt Grzelcyk | BU | FR | D | 13 | 8 | 0.62 |
| | Rocco Carzo | UM | SR | F | 13 | 6 | 0.46 | | Conor Sheary | UM | JR | F | 13 | 8 | 0.62 |
| | Kevin Goumas | UNH | JR | F | 13 | 6 | 0.46 | | Tim Schaller | PC | SR | F | 13 | 8 | 0.62 |
| | Pat Mullane | BC | SR | F | 14 | 6 | 0.43 | | Kevin Hayes | BC | JR | F | 14 | 8 | 0.57 |
| | Steven Whitney | BC | SR | F | 14 | 6 | 0.43 | | Chris McCarthy | UVM | SR | F | 15 | 8 | 0.53 |
| | Kevin Hayes | BC | JR | F | 14 | 6 | 0.43 | 13 | Connor Toomey | MC | SO | F | 12 | 7 | 0.58 |
| 14 | Scott Wilson | UML | SO | F | 12 | 5 | 0.42 | | Wade Megan | BU | SR | F | 13 | 7 | 0.54 |
| | Cason Hohmann | BU | SO | F | 13 | 5 | 0.38 | | Garrett Noonan | BU | JR | D | 13 | 7 | 0.54 |
| | John Henrion | UNH | SR | F | 13 | 5 | 0.38 | | Evan Rodrigues | BU | SO | F | 13 | 7 | 0.54 |
| | Chris McCarthy | UVM | SR | F | 15 | 5 | 0.33 | | Patrick Wey | BC | SR | D | 14 | 7 | 0.50 |
| | | | | | | | | | Bill Arnold | BC | JR | F | 14 | 7 | 0.50 |
| | | | | | | | | | Teddy Doherty | BC | FR | D | 14 | 7 | 0.50 |

Power Play Goals

| | | | | GP | G | GPG | Power Play Points | | | | GP | G-A-P | PPG | | |
|---|----------------------|-----|----|----|----|-----|-------------------|---|------------------|-----|----|-------|-----|-------|------|
| 1 | Kevin Hayes | BC | JR | F | 14 | 4 | 0.29 | 1 | Mike Collins | MC | JR | F | 12 | 2-7-9 | 0.75 |
| 2 | Scott Wilson | UML | SO | F | 12 | 3 | 0.25 | 2 | Bill Arnold | BC | JR | F | 14 | 3-5-8 | 0.57 |
| | Austin Block | UNH | SR | F | 13 | 3 | 0.23 | 3 | Connor Toomey | MC | SO | F | 12 | 2-5-7 | 0.58 |
| | Steven Whitney | BC | SR | F | 14 | 3 | 0.21 | | Kevin Hayes | BC | JR | F | 14 | 4-3-7 | 0.50 |
| | Bill Arnold | BC | JR | F | 14 | 3 | 0.21 | 5 | Conor Sheary | UM | JR | F | 13 | 1-5-6 | 0.46 |
| | Jacob Fallon | UVM | SO | F | 15 | 3 | 0.20 | | Teddy Doherty | BC | FR | D | 14 | 1-5-6 | 0.43 |
| 7 | 16 Players Tied With | | | | | 2 | | 7 | Scott Wilson | UML | SO | F | 12 | 3-2-5 | 0.42 |
| | | | | | | | | | Joseph Pendenza | UML | JR | F | 12 | 2-3-5 | 0.42 |
| | | | | | | | | | Brendan Ellis | MC | JR | D | 12 | 2-3-5 | 0.42 |
| | | | | | | | | | Kevin Goumas | UNH | JR | F | 13 | 2-3-5 | 0.38 |
| | | | | | | | | | Steven Whitney | BC | SR | F | 14 | 3-2-5 | 0.36 |
| | | | | | | | | | Johnny Gaudreau | BC | SO | F | 14 | 2-3-5 | 0.36 |
| | | | | | | | | | Michael Matheson | BC | FR | D | 14 | 2-3-5 | 0.36 |
| | | | | | | | | | Patrick Wey | BC | SR | D | 14 | 1-4-5 | 0.36 |
| | | | | | | | | | Chris McCarthy | UVM | SR | F | 15 | 1-4-5 | 0.33 |

Shorthanded Goals

| | | | | GP | G | GPG | Game-Winning Goals | | | | GP | G | GPG | | |
|---|-------------------|-----|----|----|----|-----|--------------------|---|----------------------|-----|----|---|-----|---|------|
| 1 | Wade Megan | BU | SR | F | 13 | 2 | 0.15 | 1 | Johnny Gaudreau | BC | SO | F | 14 | 5 | 0.36 |
| | Grayson Downing | UNH | SO | F | 13 | 2 | 0.15 | 2 | Josh Holmstrom | UML | JR | F | 12 | 2 | 0.17 |
| 3 | Stefan Demopoulos | PC | SO | F | 7 | 1 | 0.14 | | Jordan Heywood | MC | JR | D | 12 | 2 | 0.17 |
| | Adam Chapie | UML | FR | F | 8 | 1 | 0.12 | | Wade Megan | BU | SR | F | 13 | 2 | 0.15 |
| | Steven McParland | PC | FR | RW | 9 | 1 | 0.11 | | John Henrion | UNH | SR | F | 13 | 2 | 0.15 |
| | Connor Leen | ME | SO | F | 11 | 1 | 0.09 | | Kevin Roy | NU | FR | F | 13 | 2 | 0.15 |
| | Joseph Pendenza | UML | JR | F | 12 | 1 | 0.08 | | Ross Mauermann | PC | SO | F | 13 | 2 | 0.15 |
| | Colin Shea | UM | JR | D | 13 | 1 | 0.08 | | Steven Whitney | BC | SR | F | 14 | 2 | 0.14 |
| | Robbie Vrolyk | NU | SR | F | 13 | 1 | 0.08 | 9 | 38 Players Tied With | | | | 1 | | |
| | Adam Reid | NU | SO | F | 13 | 1 | 0.08 | | | | | | | | |
| | Bill Arnold | BC | JR | F | 14 | 1 | 0.07 | | | | | | | | |

Plus-Minus

| | | | | GP | +/- | Hat Tricks | | | | GP | HT | | |
|---|---------------------|-----|----|----|-----|------------|---|---------------|-----|----|----|----|---|
| 1 | Cason Hohmann | BU | SO | F | 13 | +15 | 1 | Riley Wetmore | UML | SR | F | 12 | 1 |
| 2 | Wade Megan | BU | SR | F | 13 | +13 | | Derek Army | PC | JR | F | 13 | 1 |
| 3 | Alex Velischek | PC | SR | D | 13 | +12 | | | | | | | |
| 4 | Michael Matheson | BC | FR | D | 14 | +11 | | | | | | | |
| 5 | Evan Rodrigues | BU | SO | F | 13 | +10 | | | | | | | |
| | Trevor van Riemsdyk | UNH | SO | D | 13 | +10 | | | | | | | |
| 7 | Kevin Goumas | UNH | JR | F | 13 | +9 | | | | | | | |
| | Steven Whitney | BC | SR | F | 14 | +9 | | | | | | | |
| 9 | Derek Army | PC | JR | F | 13 | +8 | | | | | | | |
| | Pat Mullane | BC | SR | F | 14 | +8 | | | | | | | |
| | Johnny Gaudreau | BC | SO | F | 14 | +8 | | | | | | | |

Hockey East Conference Goaltending Leaders

Goals Against Average

| | | | GP | Minutes | GA | GAA | Record | SO | Saves | Save % | NHL | |
|----|------------------|-----|----|---------|--------|-----|--------|--------|-------|--------|------|-----|
| 1 | Casey DeSmith | UNH | SO | 13 | 765:24 | 20 | 1.57 | 9-3-1 | 4 | 361 | .948 | |
| 2 | Kevin Boyle | UM | SO | 9 | 544:47 | 19 | 2.09 | 4-4-1 | 1 | 226 | .922 | |
| 3 | Jon Gillies | PC | FR | 12 | 725:41 | 26 | 2.15 | 7-4-1 | 2 | 318 | .924 | CGY |
| 4 | Parker Milner | BC | SR | 14 | 844:29 | 31 | 2.20 | 10-3-1 | 2 | 393 | .927 | |
| 5 | Matt O'Connor | BU | FR | 10 | 560:26 | 21 | 2.25 | 6-3-0 | 0 | 286 | .932 | |
| 6 | Sam Marotta | MC | JR | 7 | 421:42 | 16 | 2.28 | 4-3-0 | 1 | 189 | .922 | |
| 7 | Rasmus Tirronen | MC | SO | 5 | 303:59 | 12 | 2.37 | 2-2-1 | 0 | 139 | .921 | |
| 8 | Martin Ouellette | ME | JR | 10 | 575:44 | 23 | 2.40 | 1-6-3 | 0 | 237 | .912 | CLB |
| 9 | Chris Rawlings | NU | SR | 10 | 531:58 | 23 | 2.59 | 3-5-1 | 1 | 277 | .923 | |
| 10 | Brody Hoffman | UVM | FR | 15 | 863:04 | 43 | 2.99 | 3-8-4 | 1 | 394 | .902 | |
| 11 | Doug Carr | UML | JR | 10 | 582:04 | 29 | 2.99 | 3-6-1 | 0 | 245 | .894 | |

Save Percentage

| | | | GP | Minutes | GA | GAA | Record | SO | Saves | Save % | NHL | |
|----|------------------|-----|----|---------|--------|-----|--------|--------|-------|--------|------|-----|
| 1 | Casey DeSmith | UNH | SO | 13 | 765:24 | 20 | 1.57 | 9-3-1 | 4 | 361 | .948 | |
| 2 | Matt O'Connor | BU | FR | 10 | 560:26 | 21 | 2.25 | 6-3-0 | 0 | 286 | .932 | |
| 3 | Parker Milner | BC | SR | 14 | 844:29 | 31 | 2.20 | 10-3-1 | 2 | 393 | .927 | |
| 4 | Jon Gillies | PC | FR | 12 | 725:41 | 26 | 2.15 | 7-4-1 | 2 | 318 | .924 | CGY |
| 5 | Chris Rawlings | NU | SR | 10 | 531:58 | 23 | 2.59 | 3-5-1 | 1 | 277 | .923 | |
| 6 | Kevin Boyle | UM | SO | 9 | 544:47 | 19 | 2.09 | 4-4-1 | 1 | 226 | .922 | |
| 7 | Sam Marotta | MC | JR | 7 | 421:42 | 16 | 2.28 | 4-3-0 | 1 | 189 | .922 | |
| 8 | Rasmus Tirronen | MC | SO | 5 | 303:59 | 12 | 2.37 | 2-2-1 | 0 | 139 | .921 | |
| 9 | Martin Ouellette | ME | JR | 10 | 575:44 | 23 | 2.40 | 1-6-3 | 0 | 237 | .912 | CLB |
| 10 | Brody Hoffman | UVM | FR | 15 | 863:04 | 43 | 2.99 | 3-8-4 | 1 | 394 | .902 | |
| 11 | Doug Carr | UML | JR | 10 | 582:04 | 29 | 2.99 | 3-6-1 | 0 | 245 | .894 | |

Saves

| | | | GP | SVS/G | Saves | |
|----|-------------------|-----|----|-------|-------|-----|
| 1 | Brody Hoffman | UVM | FR | 15 | 26.3 | 394 |
| 2 | Parker Milner | BC | SR | 14 | 28.1 | 393 |
| 3 | Casey DeSmith | UNH | SO | 13 | 27.8 | 361 |
| 4 | Jon Gillies | PC | FR | 12 | 26.5 | 318 |
| 5 | Matt O'Connor | BU | FR | 10 | 28.6 | 286 |
| 6 | Chris Rawlings | NU | SR | 10 | 27.7 | 277 |
| 7 | Doug Carr | UML | JR | 10 | 24.5 | 245 |
| 8 | Martin Ouellette | ME | JR | 10 | 23.7 | 237 |
| 9 | Kevin Boyle | UM | SO | 9 | 25.1 | 226 |
| 10 | Sam Marotta | MC | JR | 7 | 27.0 | 189 |
| 11 | Rasmus Tirronen | MC | SO | 5 | 27.8 | 139 |
| 12 | Bryan Mountain | NU | SR | 4 | 27.8 | 111 |
| 13 | Sean Maguire | BU | FR | 4 | 26.0 | 104 |
| 14 | Steve Mastalerz | UM | SO | 4 | 22.2 | 89 |
| 15 | Dan Sullivan | ME | JR | 2 | 40.0 | 80 |
| 16 | Connor Hellebuyck | UML | FR | 3 | 18.0 | 54 |
| 17 | Russ Stein | PC | SR | 1 | 28.0 | 28 |
| 18 | Clay Witt | NU | JR | 1 | 17.0 | 17 |
| 19 | Billy Faust | UVM | FR | 2 | 6.0 | 12 |
| 20 | Jeff Wyer | UNH | JR | 1 | 8.0 | 8 |

Shutouts

| | | | GP | Shutouts | |
|---|-------------------|-----|----|----------|---|
| 1 | Casey DeSmith | UNH | SO | 13 | 4 |
| 2 | Jon Gillies | PC | FR | 12 | 2 |
| | Parker Milner | BC | SR | 14 | 2 |
| 4 | Connor Hellebuyck | UML | FR | 3 | 1 |
| | Sean Maguire | BU | FR | 4 | 1 |
| | Bryan Mountain | NU | SR | 4 | 1 |
| | Sam Marotta | MC | JR | 7 | 1 |
| | Kevin Boyle | UM | SO | 9 | 1 |
| | Chris Rawlings | NU | SR | 10 | 1 |
| | Brody Hoffman | UVM | FR | 15 | 1 |

Hockey East Conference Team Stats

TEAM OFFENSE



| Team | Games | Goals | G/GM |
|--------------------------------------|-------|-------|------|
| 1 Boston College | 14 | 47 | 3.36 |
| 2 Merrimack | 12 | 38 | 3.17 |
| 3 Boston University New Hampshire | 13 | 39 | 3.00 |
| 5 UMass Lowell | 12 | 33 | 2.75 |
| 6 Providence | 13 | 35 | 2.69 |
| 7 Massachusetts | 13 | 33 | 2.54 |
| 8 Vermont | 15 | 30 | 2.00 |
| 9 Northeastern | 13 | 23 | 1.77 |
| 10 Maine | 12 | 15 | 1.25 |

TEAM DEFENSE



| Team | Games | Goals | G/GM |
|---------------------|-------|-------|------|
| 1 New Hampshire | 13 | 20 | 1.54 |
| 2 Boston College | 14 | 32 | 2.29 |
| 3 Boston University | 13 | 30 | 2.31 |
| 4 Providence | 13 | 31 | 2.38 |
| 5 Merrimack | 12 | 29 | 2.42 |
| 6 Maine | 12 | 33 | 2.75 |
| UMass Lowell | 12 | 33 | 2.75 |
| 8 Northeastern | 13 | 37 | 2.85 |
| 9 Massachusetts | 13 | 39 | 3.00 |
| 10 Vermont | 15 | 48 | 3.20 |

POWER PLAY



| Team | Totals | SHA | PP % |
|---------------------|--------|-----|------|
| 1 Boston College | 17/59 | 1 | 28.8 |
| 2 Merrimack | 13/59 | 2 | 22.0 |
| 3 Massachusetts | 10/59 | 3 | 16.9 |
| 4 UMass Lowell | 10/62 | 2 | 16.1 |
| 5 Boston University | 9/58 | 1 | 15.5 |
| 6 New Hampshire | 9/59 | 0 | 15.3 |
| 7 Vermont | 8/62 | 3 | 12.9 |
| 8 Northeastern | 6/52 | 0 | 11.5 |
| 9 Providence | 6/59 | 1 | 10.2 |
| 10 Maine | 5/57 | 0 | 8.8 |

PENALTY KILL



| Team | Totals | SHF | PK % |
|---------------------|--------|-----|------|
| 1 New Hampshire | 42/43 | 2 | 97.7 |
| 2 Boston College | 58/66 | 1 | 87.9 |
| 3 Merrimack | 46/54 | 0 | 85.2 |
| 4 UMass Lowell | 42/50 | 2 | 84.0 |
| 5 Boston University | 57/68 | 2 | 83.8 |
| 6 Massachusetts | 41/49 | 1 | 83.7 |
| 7 Northeastern | 47/57 | 2 | 82.5 |
| 8 Maine | 51/62 | 1 | 82.3 |
| 9 Providence | 50/61 | 2 | 82.0 |
| 10 Vermont | 59/76 | 0 | 77.6 |

PENALTY MINUTES



| Team | Games | PIM | PIM/G |
|---------------------|-------|-----|-------|
| 1 Maine | 12 | 189 | 15.8 |
| 2 Boston University | 13 | 193 | 14.8 |
| 3 Northeastern | 13 | 187 | 14.4 |
| 4 Merrimack | 12 | 171 | 14.2 |
| 5 Vermont | 15 | 203 | 13.5 |
| 6 Boston College | 14 | 176 | 12.6 |
| 7 Providence | 13 | 162 | 12.5 |
| 8 UMass Lowell | 12 | 141 | 11.8 |
| 9 New Hampshire | 13 | 139 | 10.7 |
| 10 Massachusetts | 13 | 132 | 10.2 |

SHOTS ON GOAL



| Team | Games | SOG | SOG/G |
|---------------------|-------|-----|-------|
| 1 New Hampshire | 13 | 448 | 34.5 |
| 2 Massachusetts | 13 | 429 | 33.0 |
| 3 Maine | 12 | 374 | 31.2 |
| 4 Merrimack | 12 | 364 | 30.3 |
| 5 Boston College | 14 | 420 | 30.0 |
| 6 Providence | 13 | 387 | 29.8 |
| 7 UMass Lowell | 12 | 344 | 28.7 |
| 8 Boston University | 13 | 371 | 28.5 |
| 9 Northeastern | 13 | 363 | 27.9 |
| 10 Vermont | 15 | 412 | 27.5 |

SCORING BY PERIOD



| Team | 1st | 2nd | 3rd | OT | Total |
|--------------------------------------|-----|-----|-----|----|-------|
| 1 Boston College | 11 | 17 | 18 | 1 | 47 |
| 2 Boston University New Hampshire | 9 | 18 | 12 | - | 39 |
| 4 Merrimack | 9 | 13 | 16 | 0 | 38 |
| 5 Providence | 10 | 11 | 13 | 1 | 35 |
| 6 Massachusetts | 7 | 15 | 10 | 1 | 33 |
| UMass Lowell | 9 | 15 | 9 | 0 | 33 |
| 8 Vermont | 6 | 13 | 11 | 0 | 30 |
| 9 Northeastern | 13 | 2 | 8 | 0 | 23 |
| 10 Maine | 7 | 5 | 3 | 0 | 15 |

GOALS ALLOWED BY PERIOD



| Team | 1st | 2nd | 3rd | OT | Total |
|---------------------|-----|-----|-----|----|-------|
| 1 New Hampshire | 8 | 9 | 2 | 1 | 20 |
| 2 Merrimack | 9 | 12 | 7 | 1 | 29 |
| 3 Boston University | 8 | 11 | 11 | - | 30 |
| 4 Providence | 8 | 12 | 11 | 0 | 31 |
| 5 Boston College | 6 | 12 | 14 | 0 | 32 |
| 6 Maine | 10 | 15 | 8 | 0 | 33 |
| UMass Lowell | 8 | 12 | 13 | 0 | 33 |
| 8 Northeastern | 10 | 14 | 13 | 0 | 37 |
| 9 Massachusetts | 11 | 13 | 14 | 1 | 39 |
| 10 Vermont | 16 | 13 | 19 | 0 | 48 |

SPECIAL TEAMS NET



| Team | PPF | SHA | PP NET | PPA | SHF | SH NET | ST NET |
|---------------------|-----|-----|--------|-----|-----|--------|--------|
| 1 New Hampshire | 9 | 0 | +9 | 1 | 2 | +1 | +10 |
| 2 Boston College | 17 | 1 | +16 | 8 | 1 | -7 | +9 |
| 3 Merrimack | 13 | 2 | +11 | 8 | 0 | -8 | +3 |
| 4 UMass Lowell | 10 | 2 | +8 | 8 | 2 | -6 | +2 |
| 5 Massachusetts | 10 | 3 | +7 | 8 | 1 | -7 | 0 |
| 6 Boston University | 9 | 1 | +8 | 11 | 2 | -9 | -1 |
| 7 Northeastern | 6 | 0 | +6 | 10 | 2 | -8 | -2 |
| 8 Providence | 6 | 1 | +5 | 11 | 2 | -9 | -4 |
| 9 Maine | 5 | 0 | +5 | 11 | 1 | -10 | -5 |
| 10 Vermont | 8 | 3 | +5 | 17 | 0 | -17 | -12 |

